

# ULINE H-12237 TORK® S4 MANUAL SOAP DISPENSER

1-800-295-5510  
uline.com

## TOOLS NEEDED

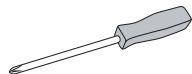
For optional hardware installation (not included):



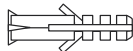
Drill



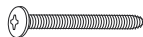
1/4" Drill Bit



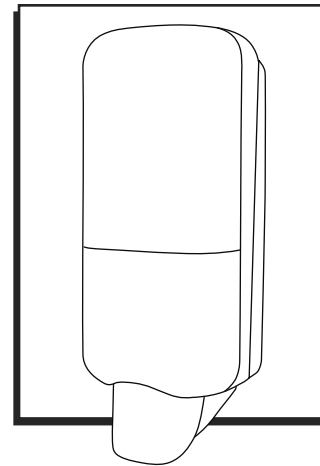
Phillips Screwdriver



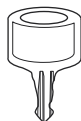
Wall Anchor x 4  
(not included)



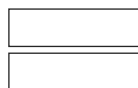
Screw x 4  
(not included)



## PARTS



Key x 1

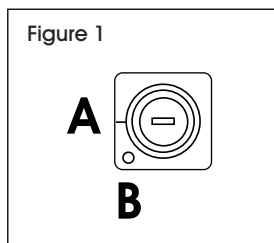


Adhesive Strip x 2

## OPENING

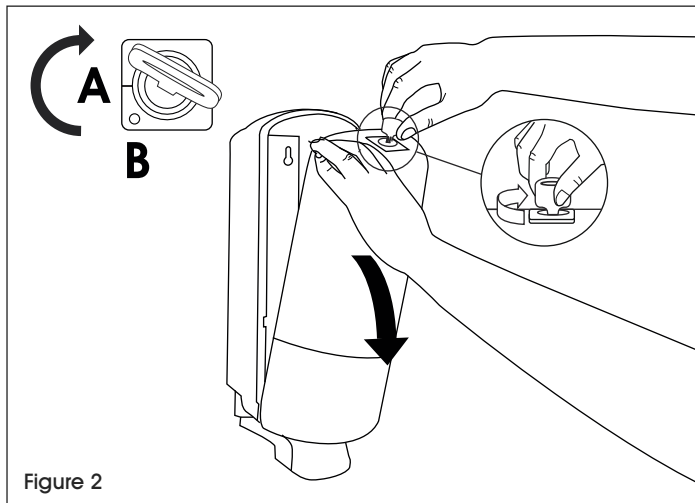
### KEYED OPTION

1. Insert key at position A.  
(See Figure 1)



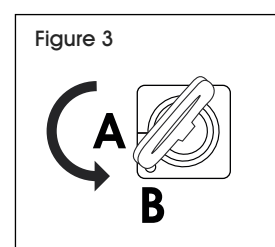
2. Turn and hold key clockwise to open dispenser.  
(See Figure 2)

 **NOTE:** Release key back to position A after closing to lock dispenser.

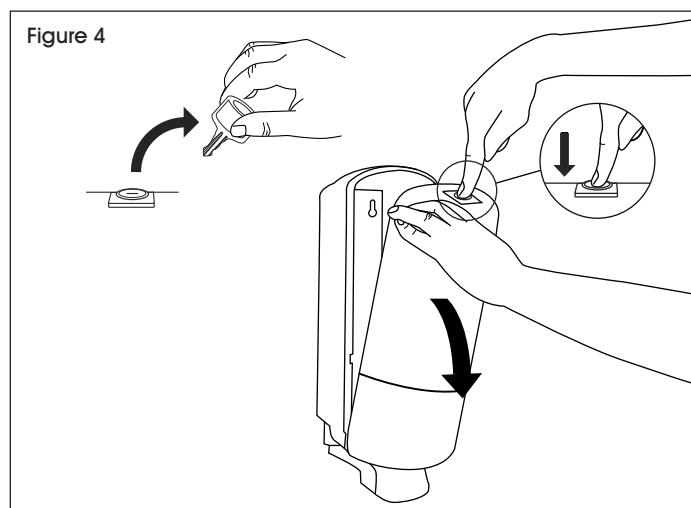


### PUSH BUTTON OPTION

1. Insert key at position A and rotate counterclockwise to position B. (See Figure 3)



2. Remove key while in position B and push button to open dispenser. (See Figure 4)



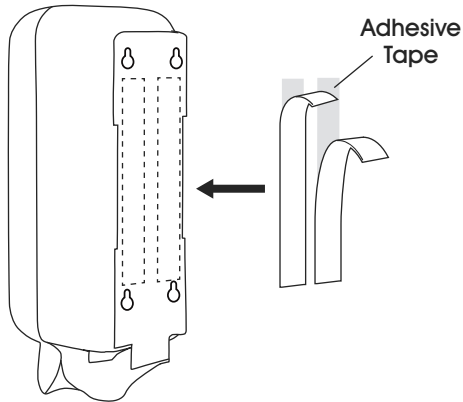
# INSTALLATION

## ADHESIVE TAPE INSTALLATION

 **NOTE:** Install dispenser at least 6" above counter or sink.

1. Clean surface with an alcohol prep pad (not included) and let dry.
2. Peel backing from one side of adhesive tape and apply to back of dispenser. (See Figure 5)

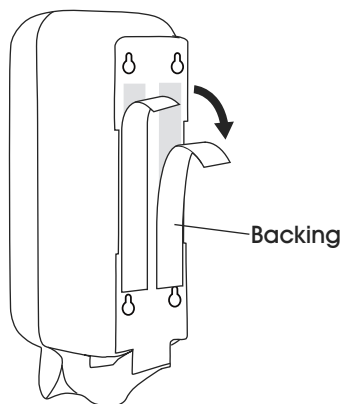
Figure 5



3. Peel backing from tape and mount dispenser on wall. Press firmly and hold in place for at least 30 seconds. (See Figure 6)

 **NOTE:** Do not load refill for at least 24 hours.

Figure 6

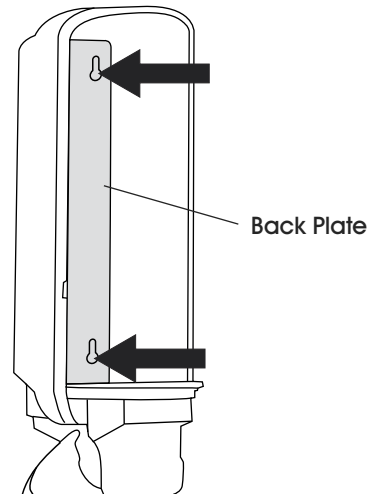


## HARDWARE INSTALLATION

 **NOTE:** Install dispenser at least 6" above counter or sink.

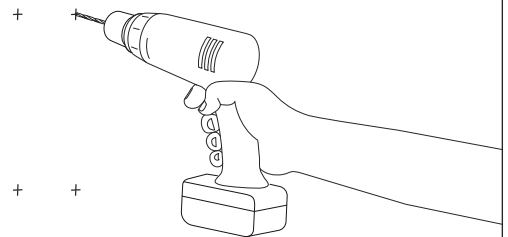
1. Open dispenser.
2. Use dispenser back plate as a template. Use a pencil to mark hole locations on wall. (See Figure 7)

Figure 7



3. Remove dispenser and drill holes using 1/4" drill bit. (See Figure 8)

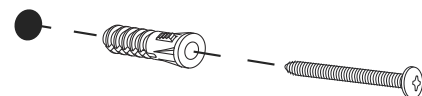
Figure 8



4. Insert anchors and screws. (See Figures 9)

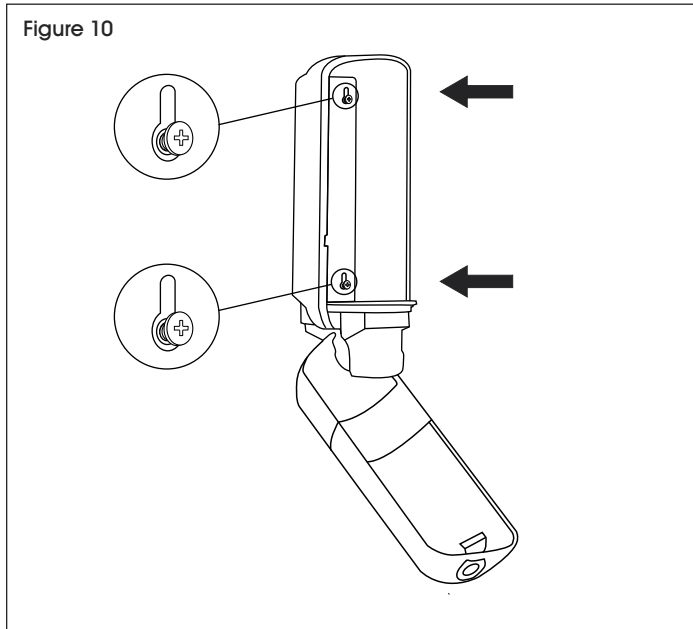
 **NOTE:** Do not tighten screws completely until step 6.

Figure 9

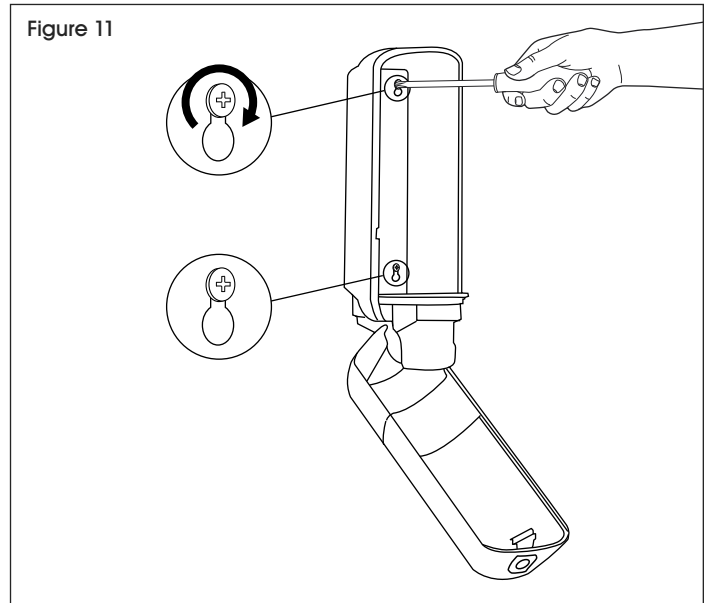


## INSTALLATION CONTINUED

5. Hold dispenser up to wall. Align holes over screws.  
(See Figure 10)

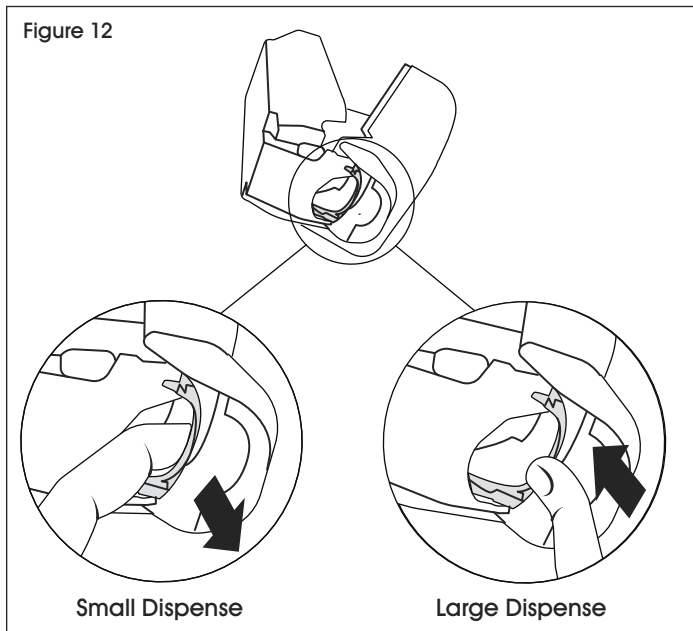


6. Tighten screws with Phillips screwdriver. (See Figure 11)

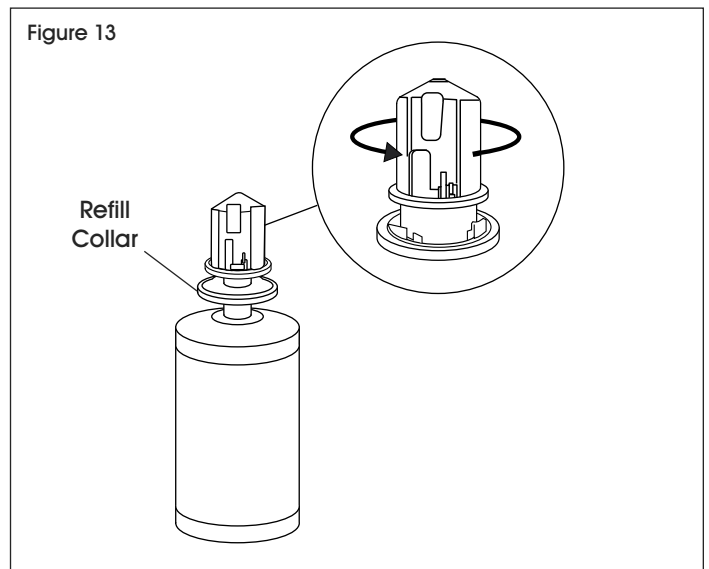


## REFILL INSTALLATION

1. Before loading, select dispensed amount by clicking the piece on the underside of dispenser down for small dispense or back up for large dispense. (See Figure 12)



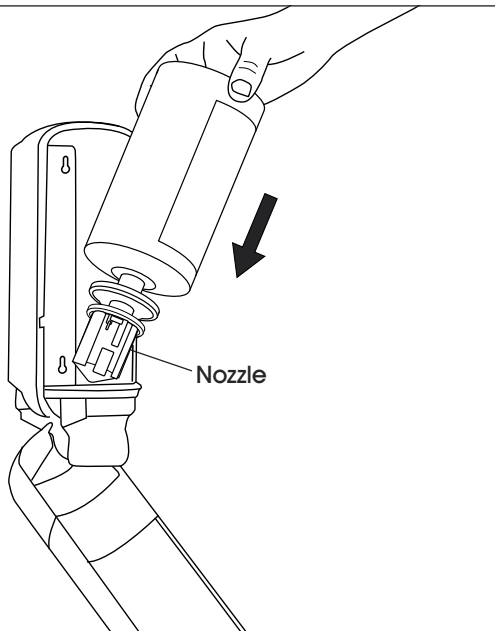
2. Turn collar of refill counterclockwise until click is heard. (See Figure 13)



## REFILL INSTALLATION CONTINUED

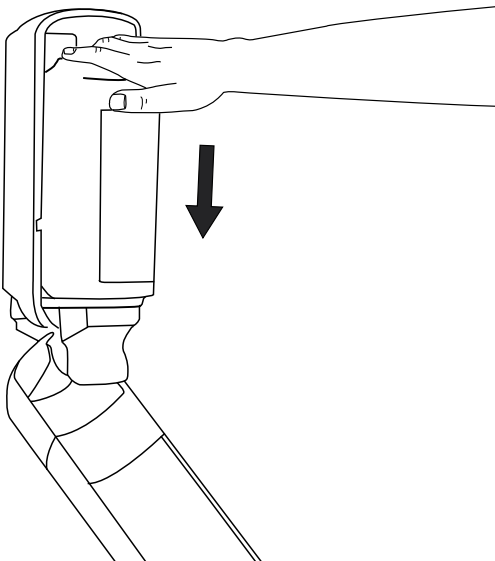
3. Flip refill upside down and load into dispenser with nozzle down. (See Figure 14)

Figure 14



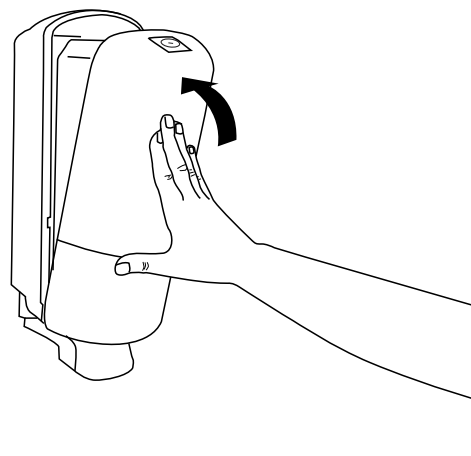
4. Push refill down until it clicks into place. (See Figure 15)

Figure 15



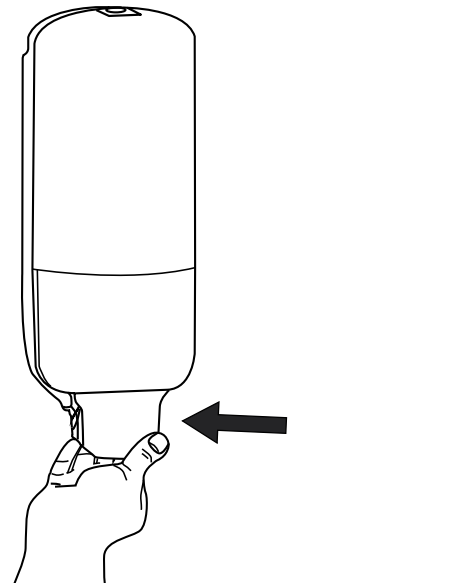
5. Close cover. (See Figure 16)

Figure 16



6. Push lever to dispense soap. (See Figure 17)

Figure 17



**ULINE**

1-800-295-5510  
uline.com

**ULINE** H-12237

# TORK® S4 DESPACHADOR MANUAL PARA JABÓN

800-295-5510  
uline.mx

## HERRAMIENTAS NECESARIAS

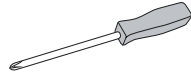
Para instalación de tornillería opcional (no incluida):



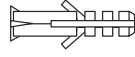
Taladro



Broca de 1/4"



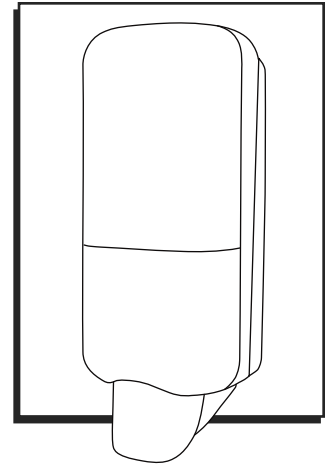
Desarmador de Cruz



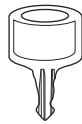
4 Taquetes  
(no incluidos)



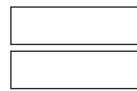
4 Tornillos  
(no incluidos)



## PARTES



1 Llave

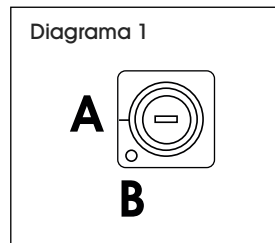


2 Tiras Adhesivas

## ABERTURA

### OPCIÓN CON LLAVE

1. Inserte la llave en la posición A. (Vea Diagrama 1)



2. Gire y mantenga la llave en el sentido de las manecillas del reloj para abrir el despachador. (Vea Diagrama 2)

 **NOTA:** Regrese la llave a la posición A después de cerrar para asegurar el despachador.

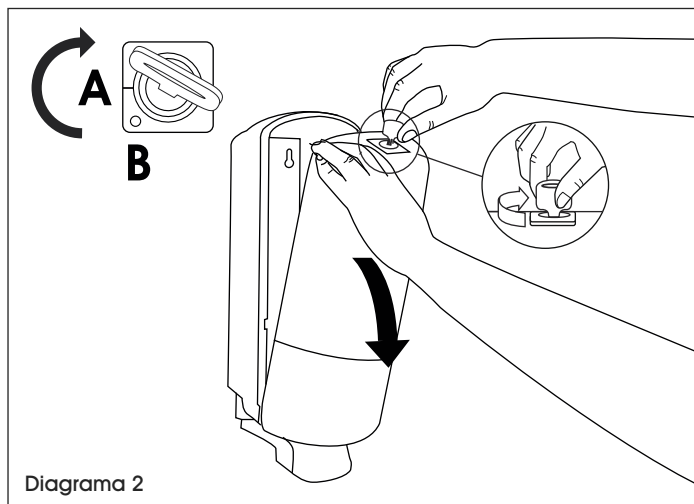
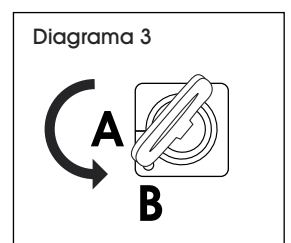


Diagrama 2

### OPCIÓN DE BOTÓN

1. Inserte la llave en la posición A y gire en el sentido contrario a las manecillas del reloj hacia la posición B. (Vea Diagrama 3)



2. Retire la llave mientras está en la posición B y presione el botón para abrir el despachador. (Vea Diagrama 4)

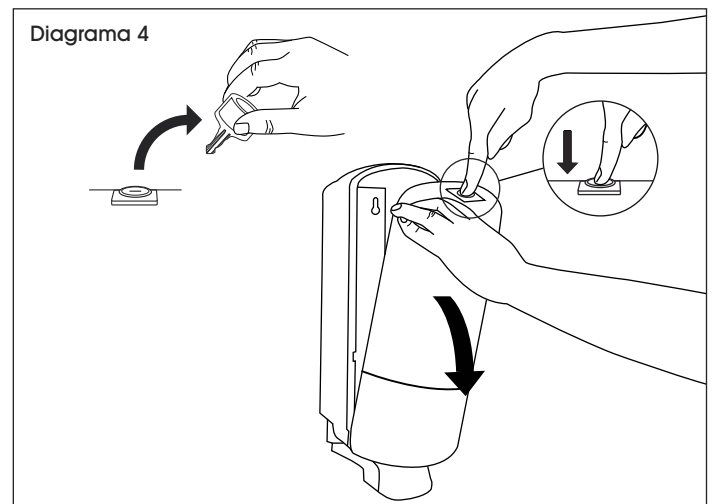



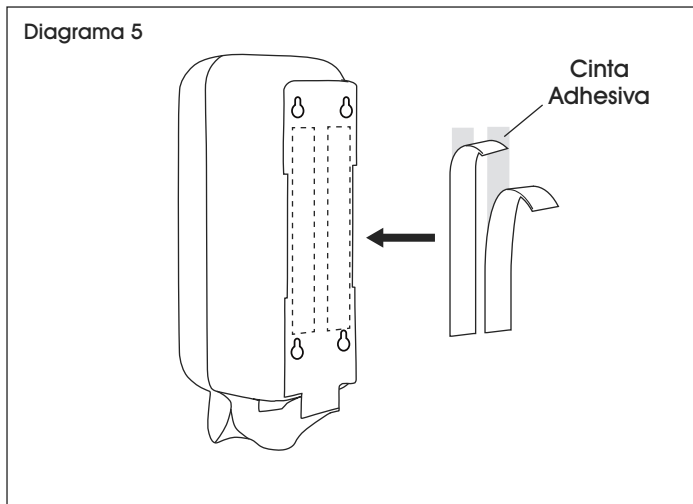
Diagrama 4

# INSTALACIÓN


## INSTALACIÓN CON CINTA ADHESIVA

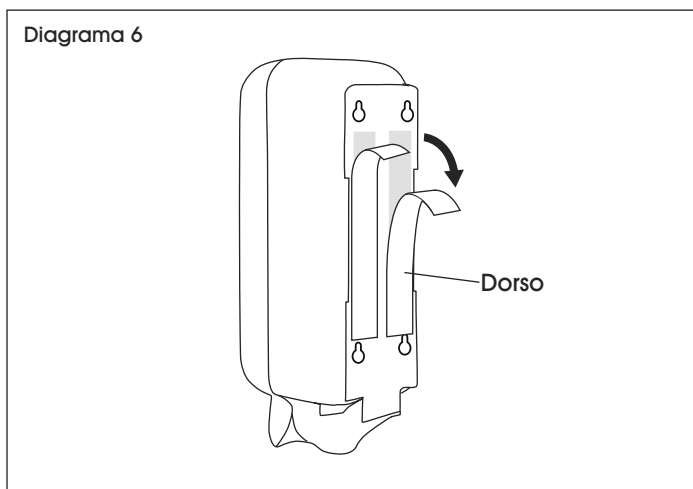
 **NOTA:** Instale el despachador por lo menos a 15.2 cm (6") por encima del mostrador o lavabo.

1. Limpie la superficie de instalación con un paño con alcohol (no incluido) y permita secar.
2. Retire el dorso de un lado de la cinta adhesiva y aplíquela a la parte posterior del despachador. (Vea Diagrama 5)




3. Retire el dorso de la cinta e instale el despachador en la pared. Presione firmemente y mantenga en su lugar por lo menos 30 segundos. (Vea Diagrama 6)

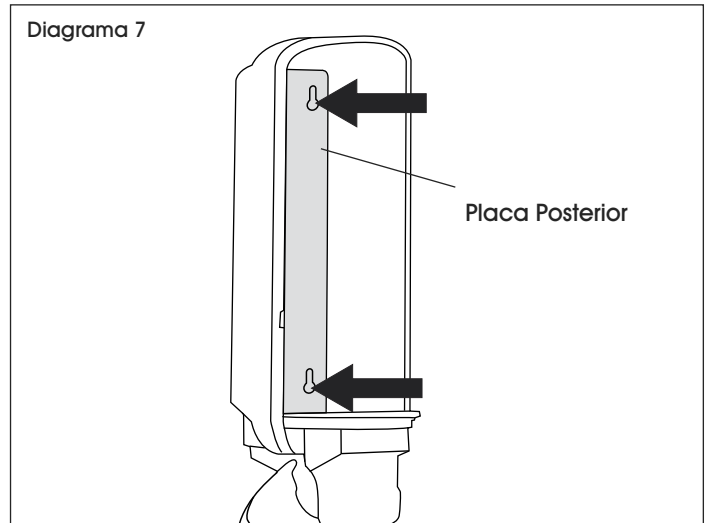
 **NOTA:** No coloque el jabón de repuesto hasta que pasen 24 horas.



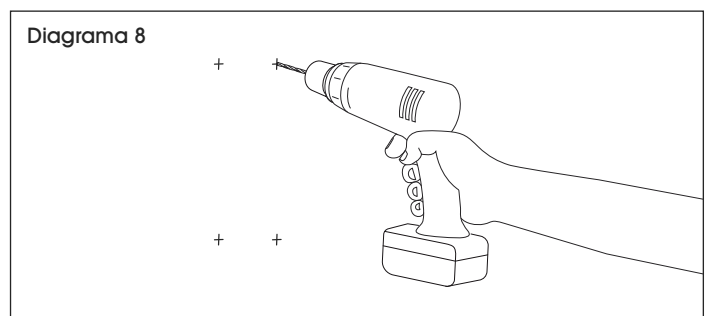
## INSTALACIÓN CON TORNILLERÍA

 **NOTA:** Instale el despachador por lo menos a 15.2 cm (6") por encima del mostrador o lavabo.

1. Abra el despachador.
2. Utilice la placa posterior del despachador como plantilla. Utilice un lápiz para marcar los orificios en la pared. (Vea Diagrama 7)

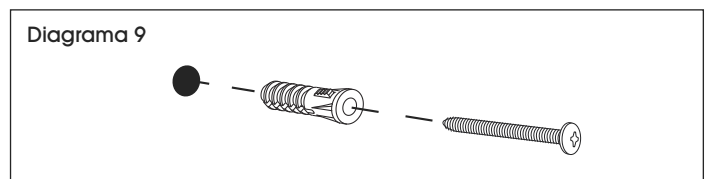


3. Retire el despachador y taladre orificios utilizando una broca de 1/4". (Vea Diagrama 8)



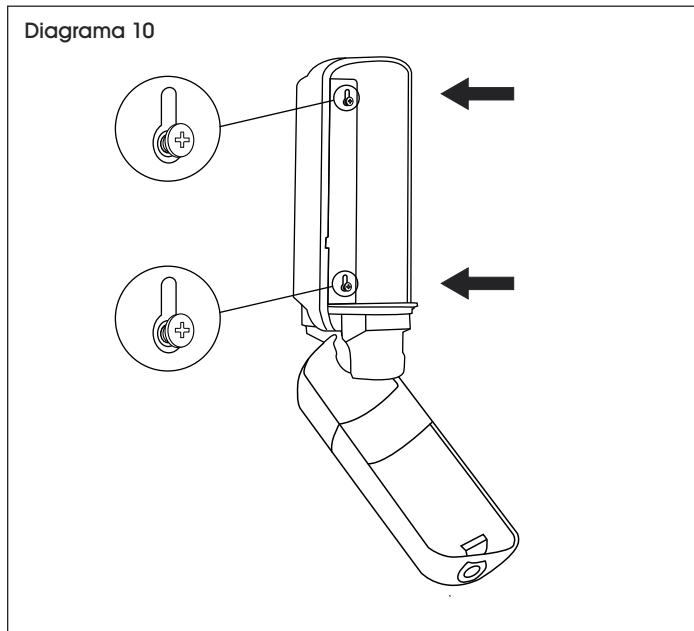
4. Inserte los taquetes y tornillos. (Vea Diagrama 9)

 **NOTA:** No apriete los tornillos completamente hasta el paso 6.

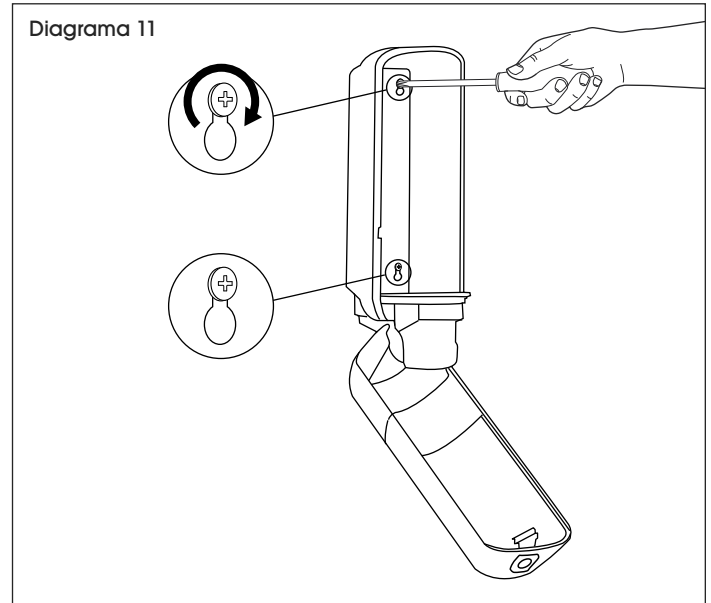


## CONTINUACIÓN DE INSTALACIÓN

5. Sostenga el despachador contra la pared. Alinee los orificios sobre los tornillos. (Vea Diagrama 10)

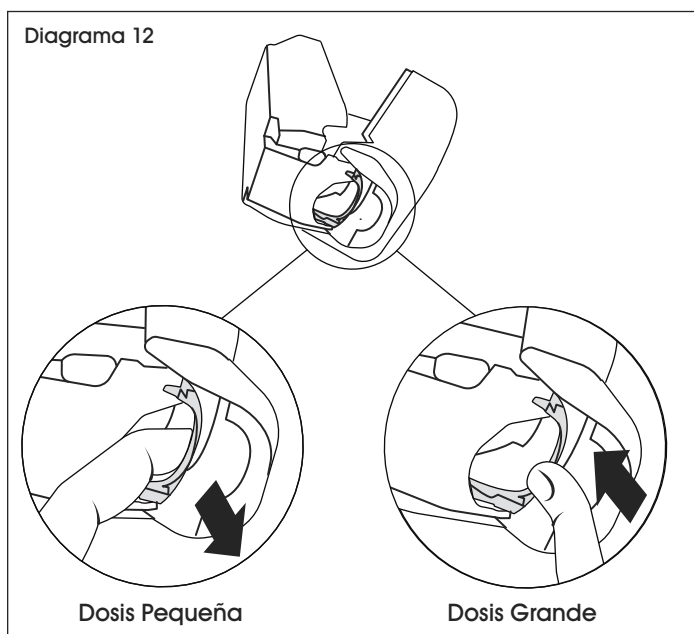


6. Apriete los tornillos con el desarmador de cruz. (Vea Diagrama 11)

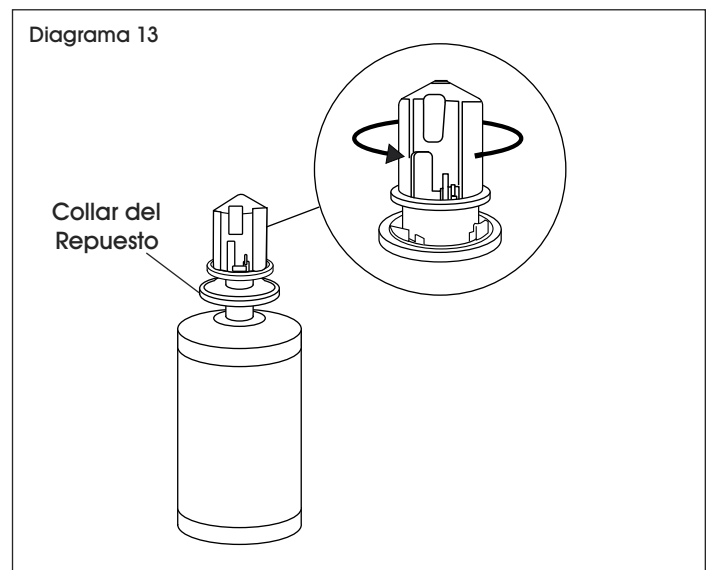


## INSTALACIÓN DEL REPUESTO

1. Antes de cargar, seleccione la cantidad a despachar presionando la pieza ubicada en la parte inferior del despachador hacia abajo para una dosis pequeña o hacia arriba para una dosis grande. (Vea Diagrama 12)



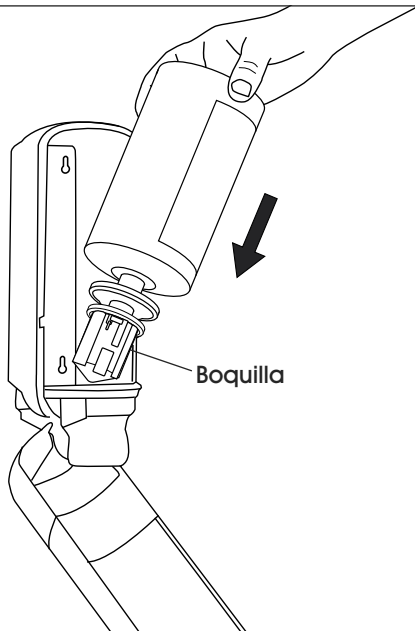
2. Gire el collar del repuesto en el sentido contrario a las manecillas del reloj hasta oír un clic. (Vea Diagrama 13)



## CONTINUACIÓN DE INSTALACIÓN DEL REPUESTO

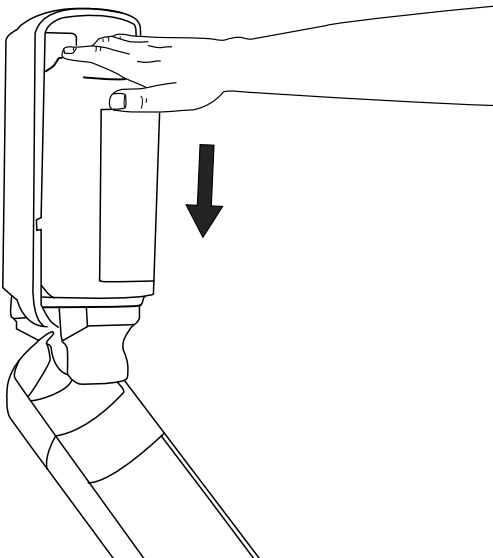
3. Voltee el repuesto y cárguelo dentro del despachador con la boquilla hacia abajo. (Vea Diagrama 14)

Diagrama 14



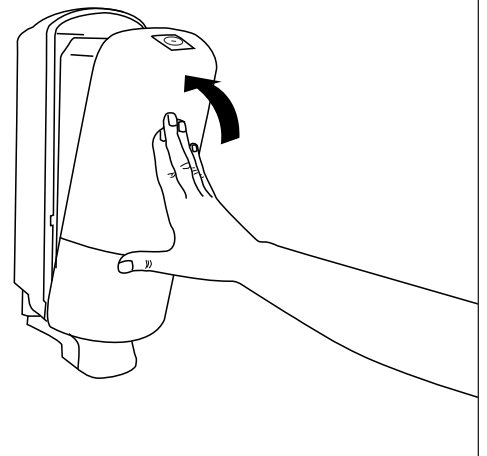
4. Presione el repuesto hasta que haga clic en su lugar. (Vea Diagrama 15)

Diagrama 15



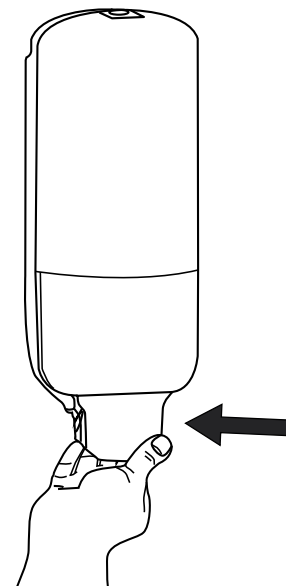
5. Cierre la cubierta. (Vea Diagrama 16)

Diagrama 16



6. Empuje la palanca para despachar el jabón. (Vea Diagrama 17)

Diagrama 17



**TORK<sup>MD</sup> S4 – DISTRIBUTEUR  
MANUEL DE SAVON****OUTILS REQUIS**

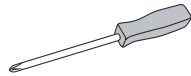
Pour installation optionnelle avec matériel de fixation (non inclus) :



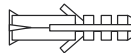
Perceuse



Mèche de perceuse de 1/4 po



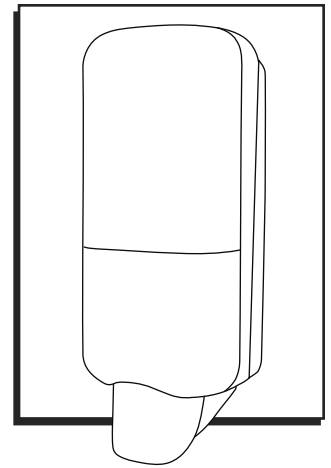
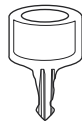
Tournevis cruciforme



Ancrage mural x 4 (non inclus)



Vis x 4 (non inclus)

**PIÈCES**

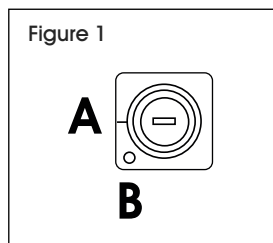
Clé x 1



Bande adhésive x 2

**OUVERTURE****OPTION AVEC CLÉ**

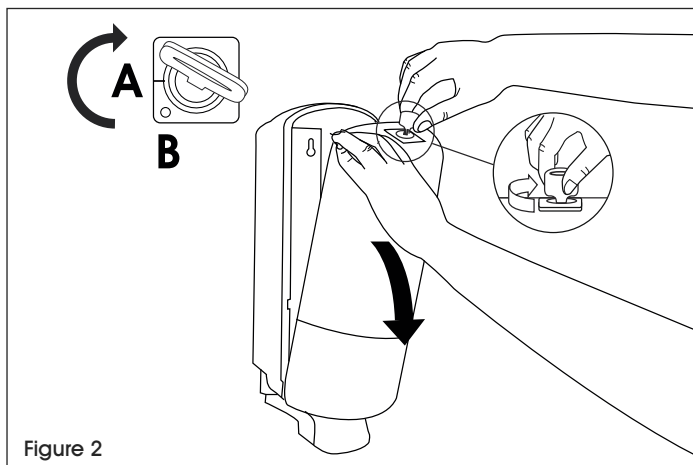
1. Insérez la clé en position A. (Voir Figure 1)



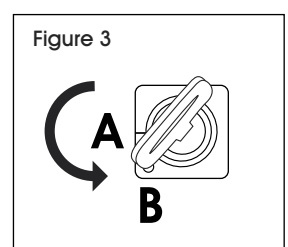
2. Pour ouvrir le distributeur, tournez et maintenez la clé dans le sens horaire. (Voir Figure 2)



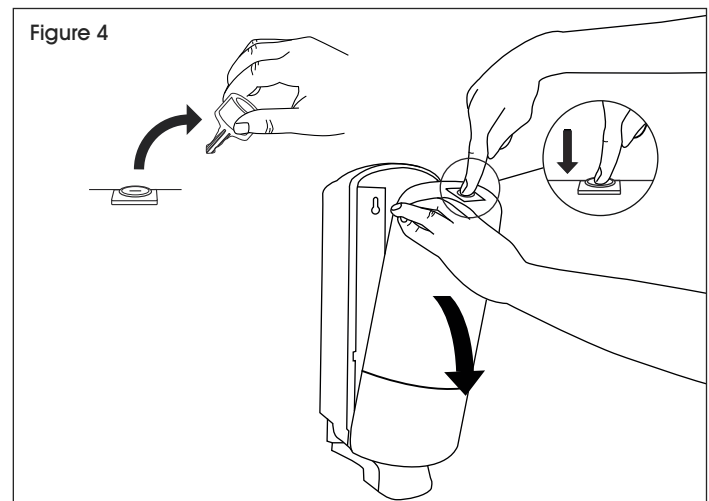
**REMARQUE :** Pour verrouiller le distributeur après l'avoir fermé, relâchez la clé pour qu'elle retourne en position A.

**OPTION AVEC BOUTON-POUSSOIR**

1. Insérez la clé en position A et tournez-la dans le sens antihoraire jusqu'à ce qu'elle atteigne la position B. (Voir Figure 3)




2. Retirez la clé lorsqu'elle est en position B et appuyez sur le bouton-poussoir pour ouvrir le distributeur. (Voir Figure 4)

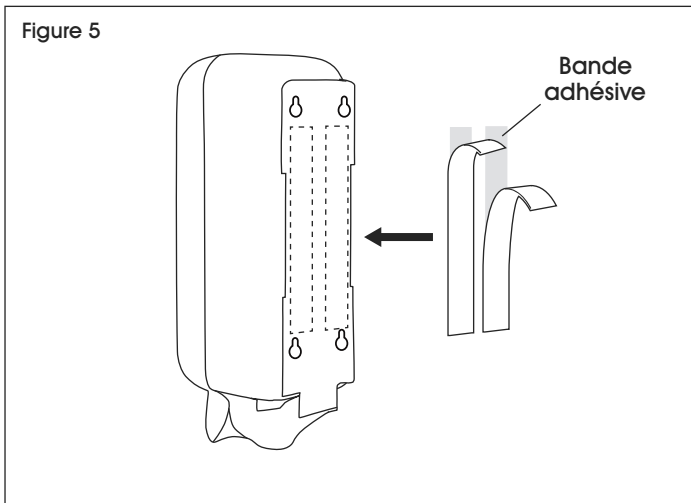


# INSTALLATION

## INSTALLATION AVEC BANDE ADHÉSIVE

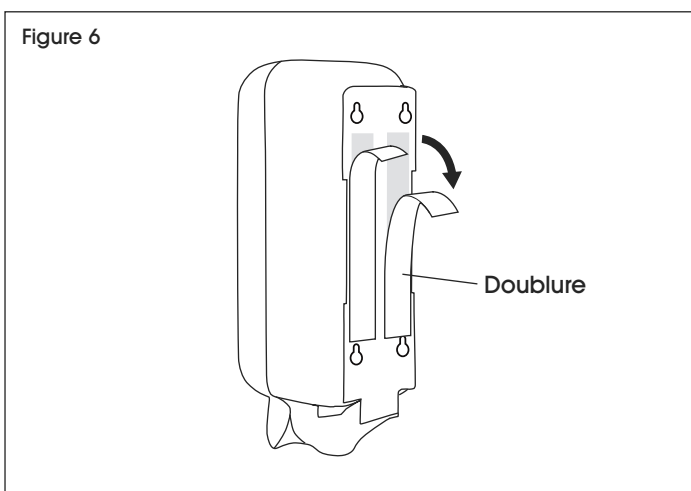
 **REMARQUE :** Installez le distributeur à une hauteur d'au moins 15,2 cm (6 po) au-dessus du lavabo ou du comptoir.

1. Nettoyez la surface d'installation avec un tampon imbibé d'alcool (non inclus), puis laissez sécher.
2. Retirez la doublure d'un côté de la bande adhésive et appliquez la bande au dos du distributeur. (Voir Figure 5)




3. Retirez la doublure de l'autre côté de la bande adhésive et fixez le distributeur au mur. Pressez fermement le distributeur contre le mur pendant au moins 30 secondes. (Voir Figure 6)

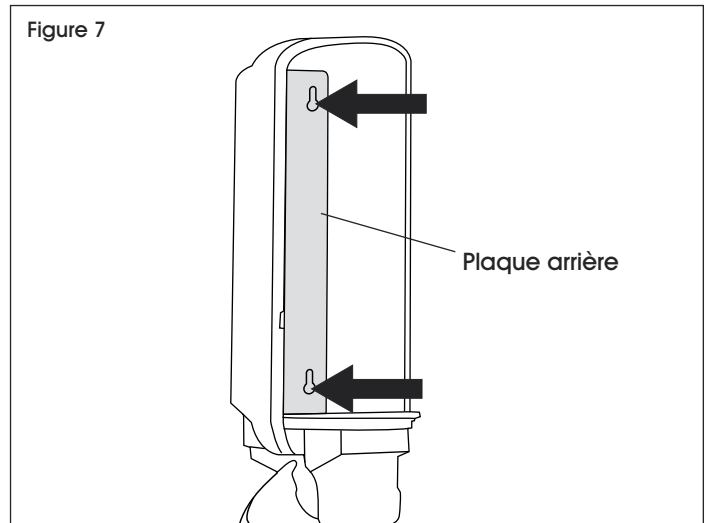
 **REMARQUE :** Attendez au moins 24 heures avant d'installer une recharge.



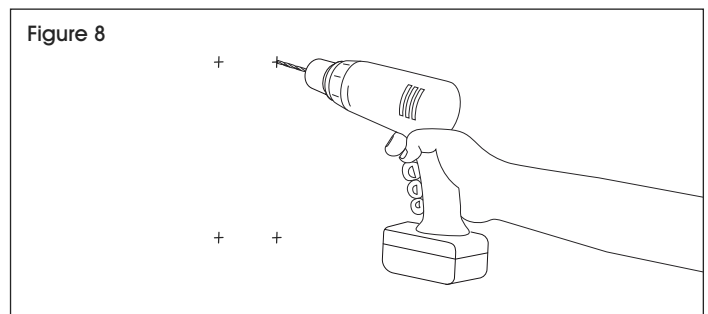
## INSTALLATION AVEC MATÉRIEL DE FIXATION

 **REMARQUE :** Installez le distributeur à une hauteur d'au moins 15,2 cm (6 po) au-dessus du lavabo ou du comptoir.

1. Ouvrez le distributeur.
2. Utilisez la plaque arrière du distributeur comme modèle. Utilisez un crayon pour marquer l'emplacement des trous sur le mur. (Voir Figure 7)

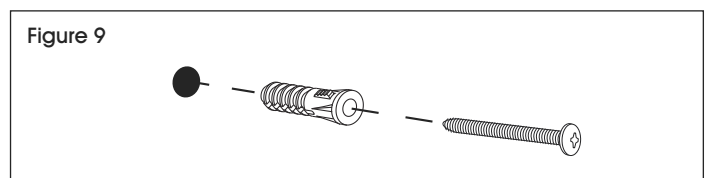


3. Retirez le distributeur et percez des trous en utilisant une mèche de perceuse de 1/4 po. (Voir Figure 8)



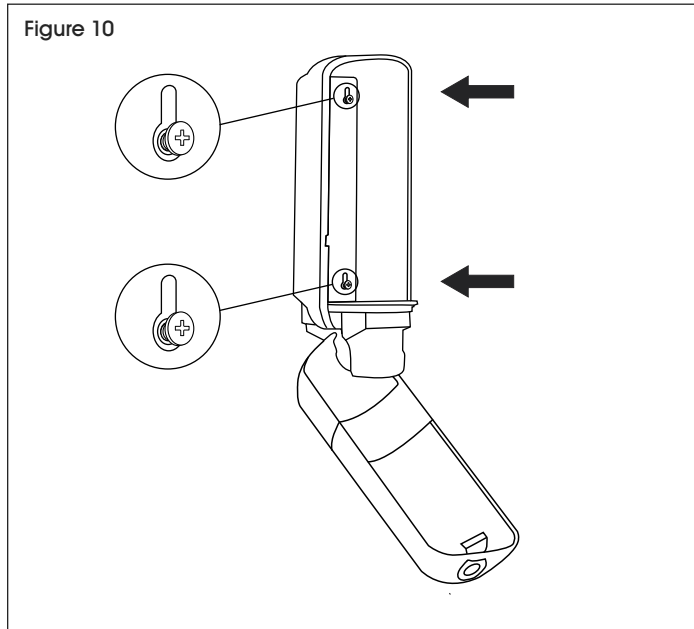
4. Insérez les ancrages et les vis. (Voir Figure 9)

 **REMARQUE :** Ne serrez pas les vis à fond avant l'étape 6.

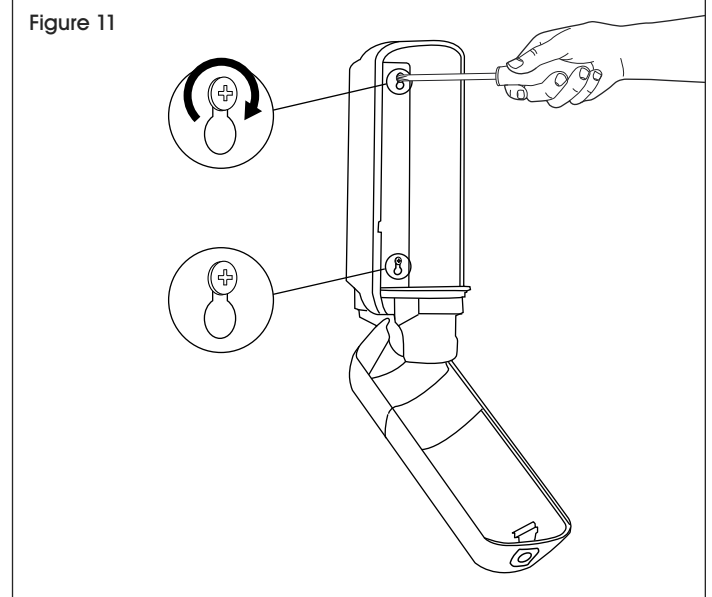


## INSTALLATION SUITE

5. Tenez le distributeur contre le mur. Alignez les trous sur les vis. (Voir Figure 10)

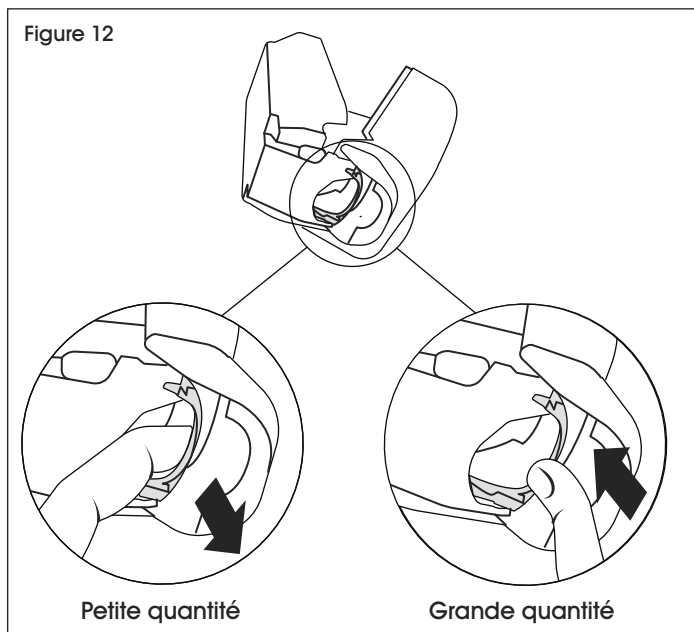


6. Serrez les vis avec un tournevis cruciforme. (Voir Figure 11)

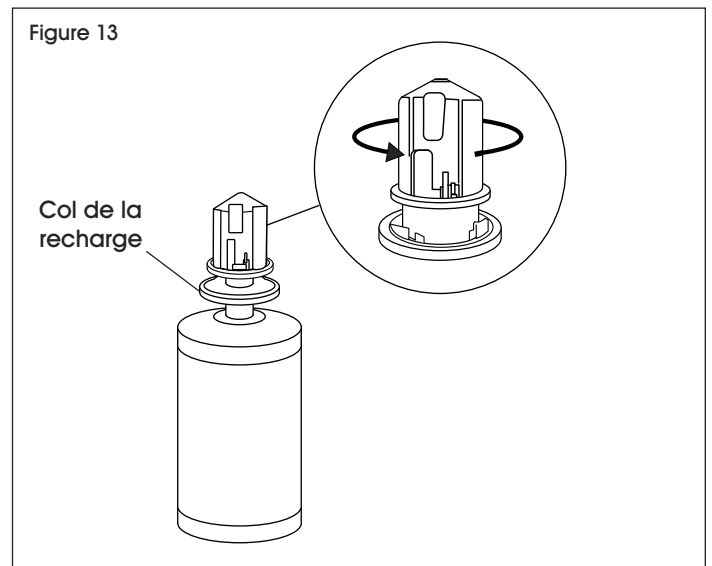


## INSTALLATION DE LA RECHARGE

1. Avant d'installer une recharge, sélectionnez la quantité de distribution à l'aide de la pièce située sous le distributeur. Poussez-la vers le bas pour une petite quantité ou vers le haut pour une grande quantité. (Voir Figure 12)



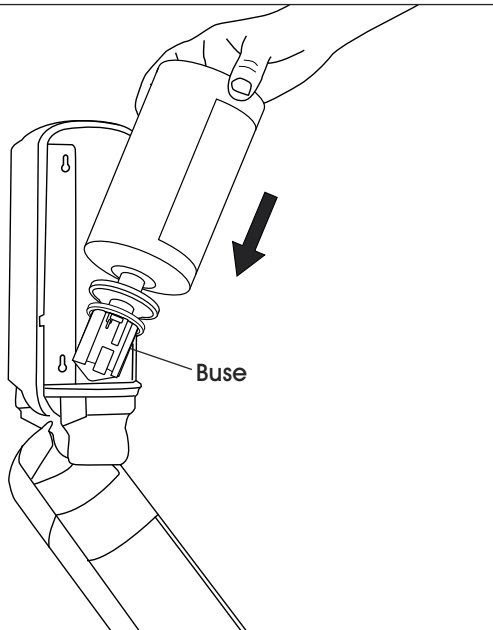
2. Faites tourner le col de la recharge dans le sens antihoraire jusqu'à entendre un déclic. (Voir Figure 13)



## INSTALLATION DE LA RECHARGE SUITE

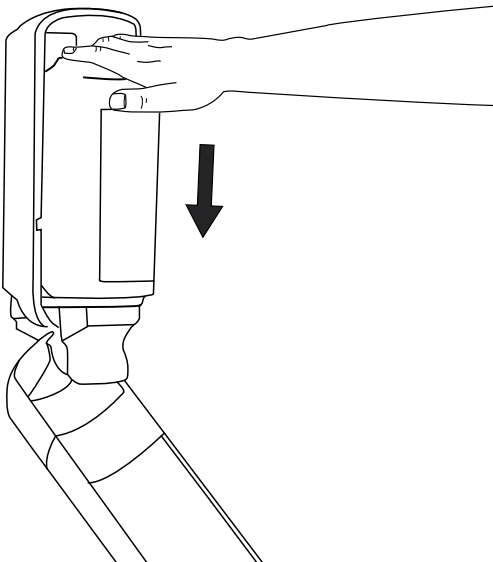
3. Positionnez la recharge à l'envers et logez-la dans le distributeur avec la buse distributrice orientée vers le bas. (Voir Figure 14)

Figure 14



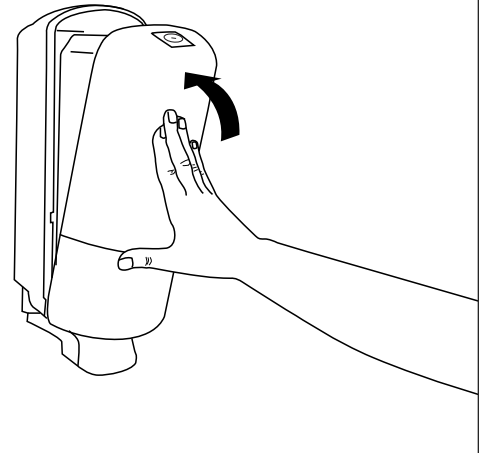
4. Appuyez sur la recharge pour la faire glisser vers le bas jusqu'à ce qu'elle s'enclenche. (Voir Figure 15)

Figure 15



5. Fermez le couvercle. (Voir Figure 16)

Figure 16



6. Appuyez sur le levier pour distribuer le savon. (Voir Figure 17)

Figure 17

