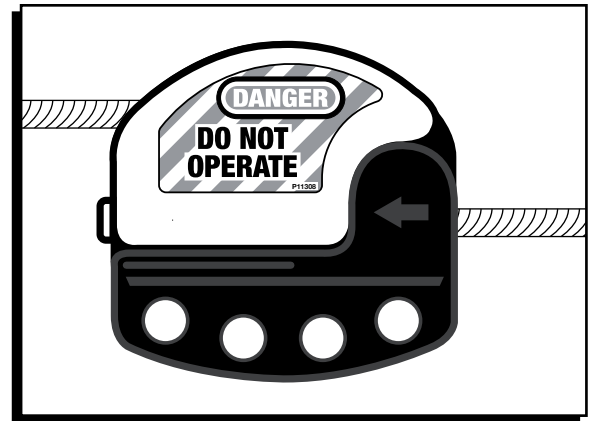


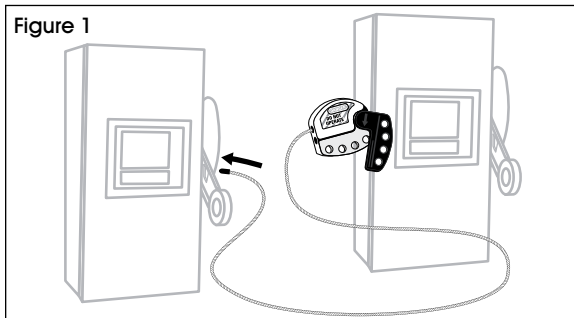
ULINE H-3441 ADJUSTABLE CABLE LOCKOUT

1-800-295-5510
uline.com

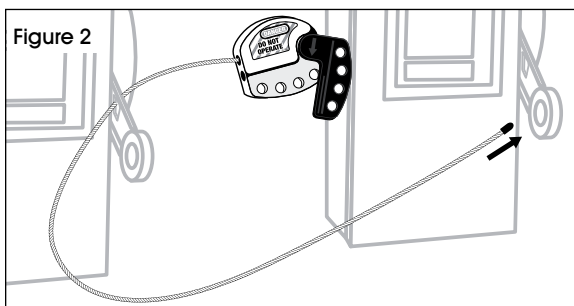


ASSEMBLY

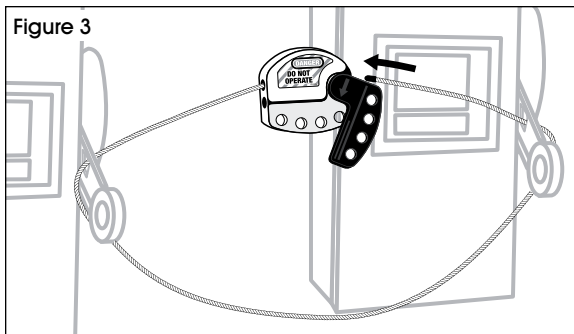
1. With the cable lockout in between the two devices, thread the cable through the first device and pull it toward you. (See Figure 1)



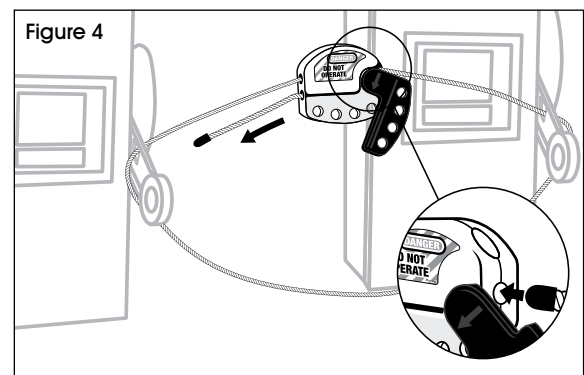
2. Bring the end of the cable over to the second device. (See Figure 2)



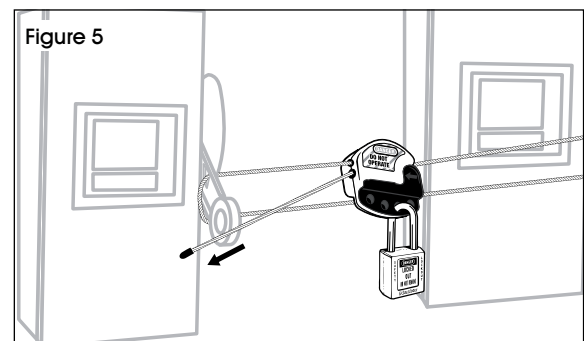
3. Thread the cable away from you through the second device. (See Figure 3)

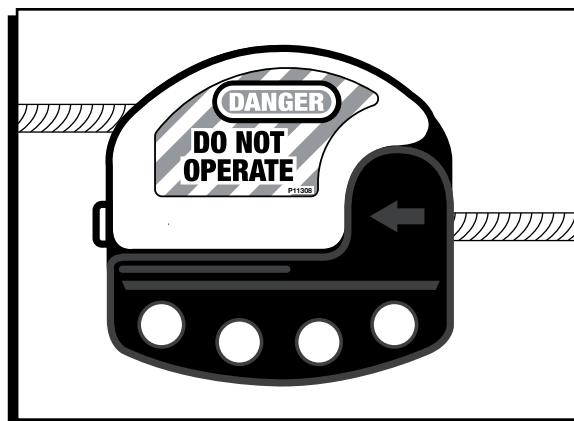


4. Insert the end of the cable into the lockout device. (See Figure 4)



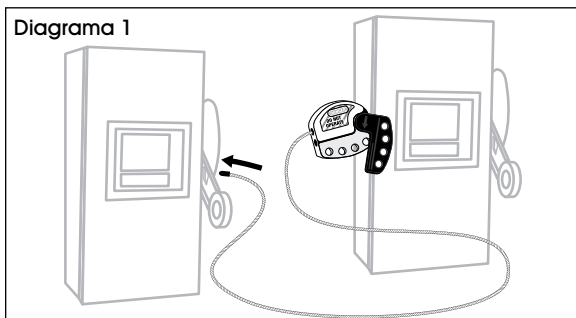
5. Close lockout handle and pull the cable through until it is taut. Insert the padlock and secure. (See Figure 5)



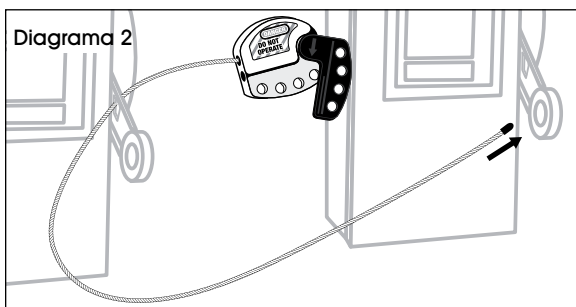


ENSAMBLE

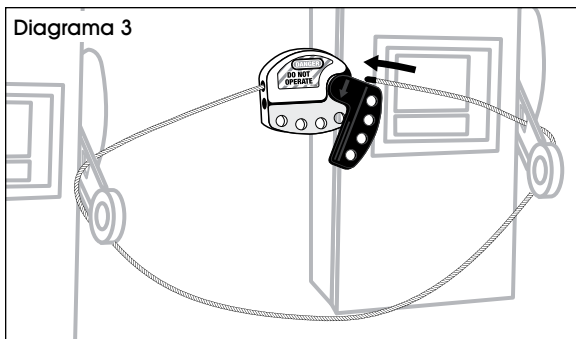
1. Con el bloqueador de cables colocado entre los dos dispositivos, inserte el cable a través del primer dispositivo y estire de él hacia usted. (Vea Diagrama 1)



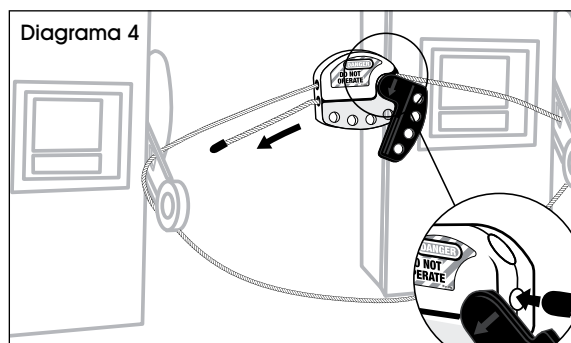
2. Lleve el extremo del cable hasta el segundo dispositivo. (Vea Diagrama 2)



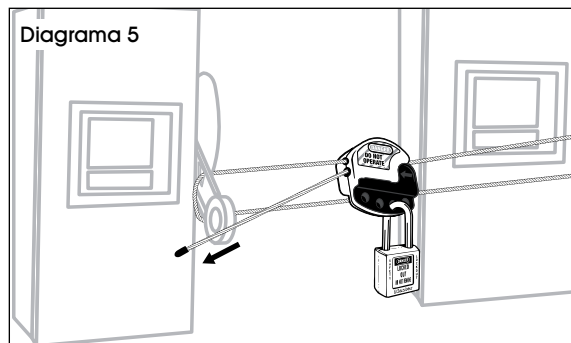
3. Inserte el cable en dirección opuesta a usted a través del segundo dispositivo. (Vea Diagrama 3)



4. Inserte el extremo del cable en el dispositivo bloqueador. (Vea Diagrama 4)

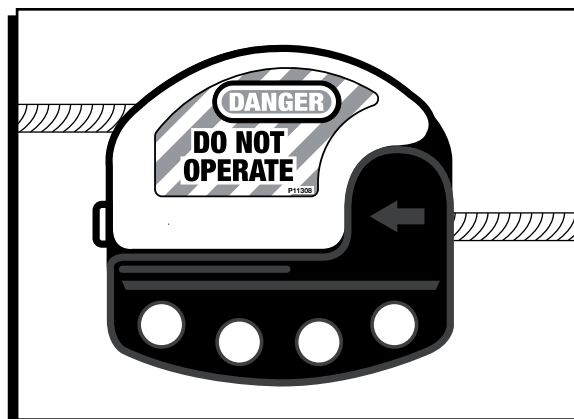


5. Cierre el asa del bloqueador y estire del cable hasta que quede tenso. Inserte el candado y ciérrelo bien. (Vea Diagrama 5)



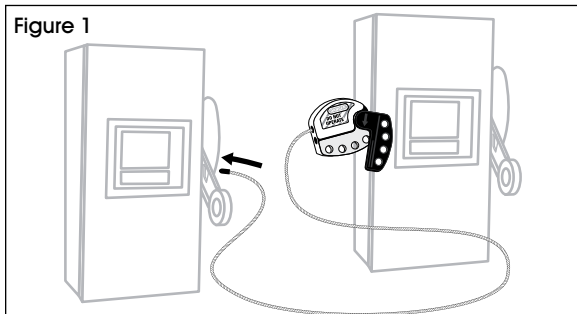
ULINE H-3441
CÂBLE DE
VERROUILLAGE
RÉGLABLE

1 800 295-5510
uline.ca

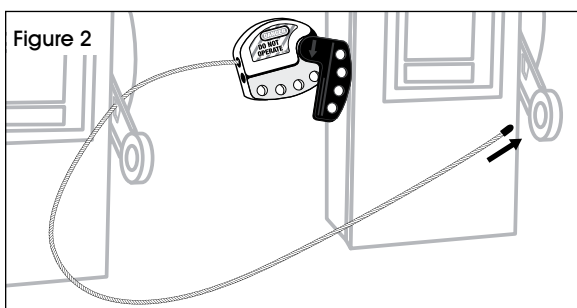


MONTAGE

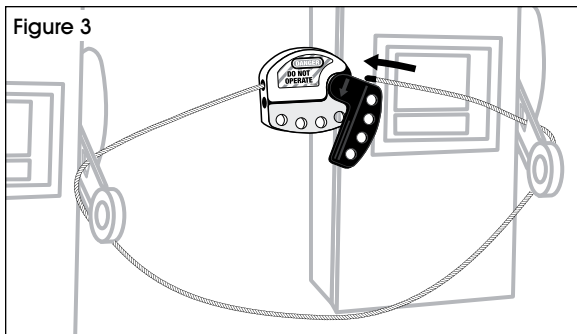
1. Avec le câble de verrouillage entre les deux appareils, faites passer le câble à travers le premier appareil et tirez-le vers vous. (Voir Figure 1)



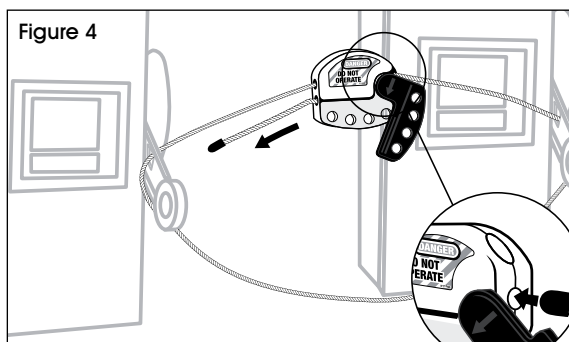
2. Faites passer l'extrémité du câble vers le deuxième appareil. (Voir Figure 2)



3. Enfilez le câble à travers le côté extérieur du deuxième appareil. (Voir Figure 3)



4. Insérez l'extrémité du câble dans le dispositif de verrouillage. (Voir Figure 4)



5. Fermez la poignée de verrouillage et tirez le câble jusqu'à ce qu'il soit tendu. Insérez le cadenas et fixez-le. (Voir Figure 5)

