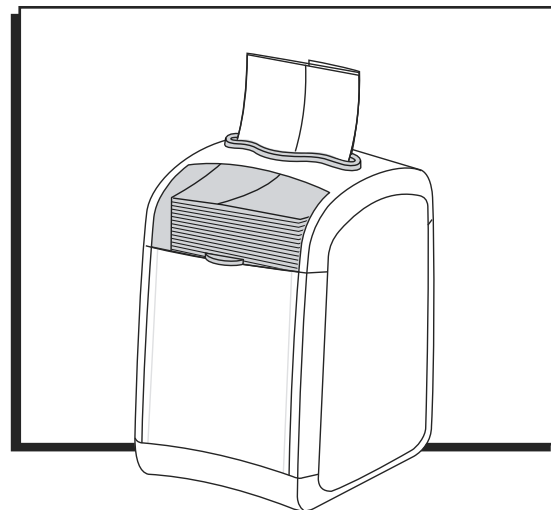



ULINE H-9503

TORK XPRESSNAP FIT® TABLETOP NAPKIN DISPENSER

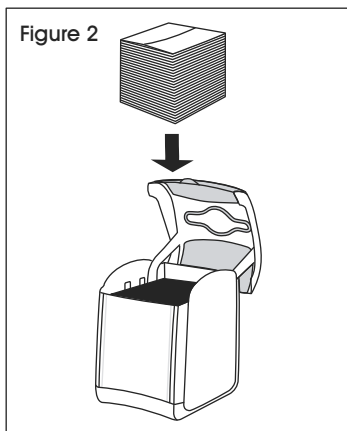
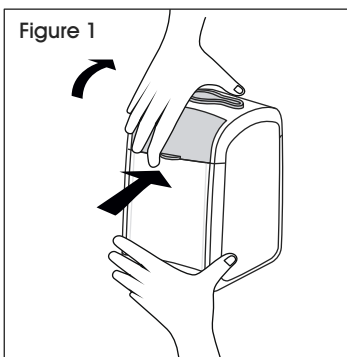
1-800-295-5510
uline.com




LOADING

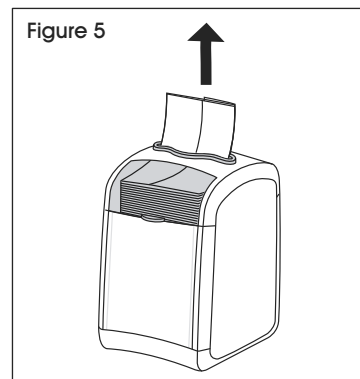
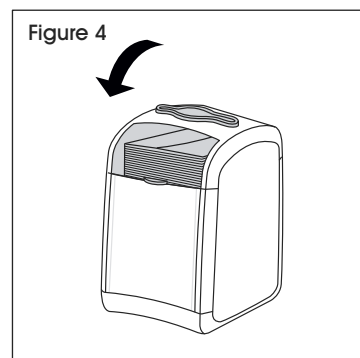
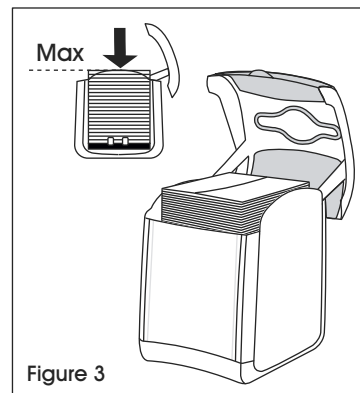
 **NOTE:** Use dispenser with Tork Xpressnap Fit® napkins (S-24380 and S-24381) only. Universal napkins will not dispense effectively from dispenser.

1. To open dispenser, place hand on top of dispenser and thumb under lip on front of dispenser. (See Figure 1)
2. Slightly squeeze lid (from the front and back) and press thumb in under lip on front of dispenser. (See Figure 1)
3. While squeezing, the latches will slightly release. Pull up on lip to open lid. (See Figure 1)
4. Load napkins into dispenser. (See Figure 2)



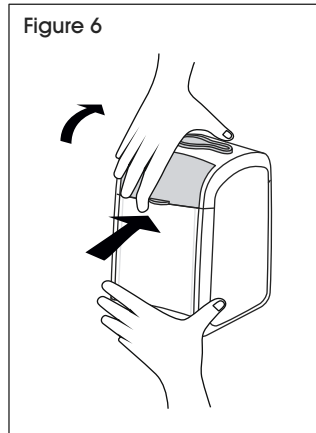
 **NOTE:** Dispenser holds up to 336 napkins at a time. Do not overfill past fill line. (See Figure 3)

5. Push napkins down until dispenser clicks before closing lid. (See Figure 4)
6. Begin dispensing. (See Figure 5)

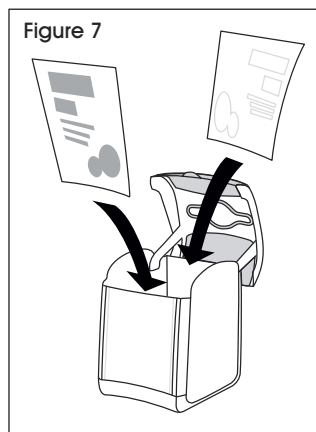


AD-A-GLANCE® FEATURE

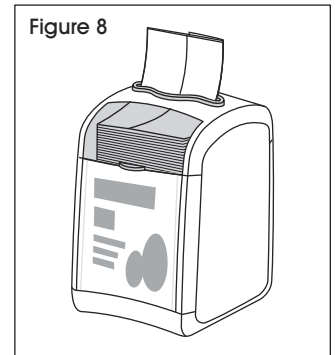
1. To use Ad-a-Glance® feature, open dispenser. (See Figure 6)



2. Pull out cards in each side of dispenser. (See Figure 7)



3. Use templates at adaglance.torkusa.com to design artwork. Ad-a-Glance® insert size is 2.9 x 3.9".
4. Insert customized artwork into dispenser and close door. (See Figure 8)



CLEANING

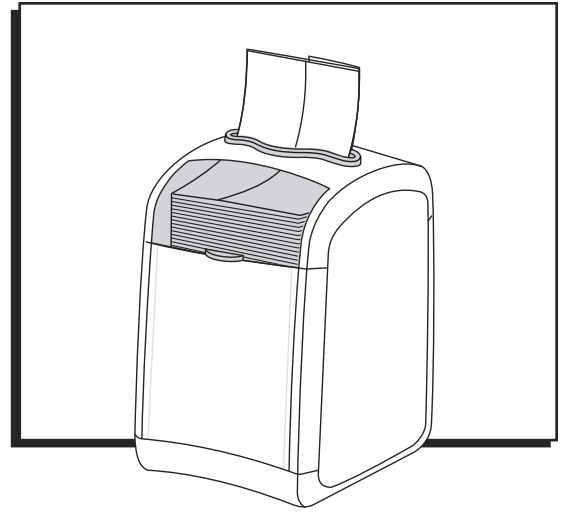
Wipe with cloth using soap and water. If necessary, use mild cleaners. Do not use abrasives. Dispenser is not dishwasher safe.

ULINE

1-800-295-5510
uline.com

ULINE H-9503
TORK XPRESSNAP FIT®
SERVILLETERO DE MESA

800-295-5510
uline.mx



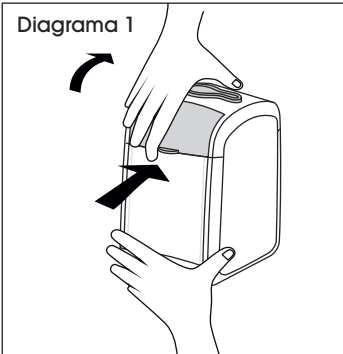
CARGA



NOTA: Use el despachador solo con servilletas Tork Xpressnap Fit® (S-24380 y S-24381). Las servilletas universales no se despachan correctamente desde este artículo.

1. Para abrir el servilletero, coloque la mano en la parte superior y el pulgar debajo del reborde del frente. (Vea Diagrama 1)

Diagrama 1

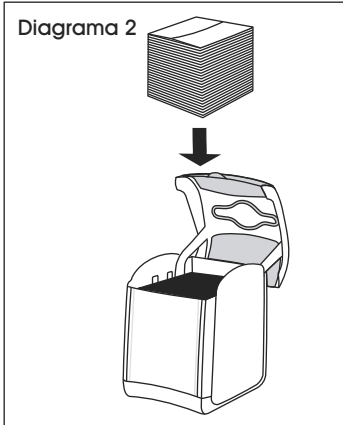


2. Apriete levemente la tapa (desde el frente y posterior) y presione con el pulgar debajo del reborde del frente del servilletero. (Vea Diagrama 1)

3. Mientras aprieta, los pestillos se liberarán levemente. Jale el reborde hacia arriba para abrir la tapa. (Vea Diagrama 1)

4. Ponga las servilletas en el despachador. (Vea Diagrama 2)

Diagrama 2



NOTA: El servilletero tiene capacidad hasta para 336 servilletas. No sobrepase la línea de llenado. (Vea Diagrama 3)

5. Empuje las servilletas hasta que el servilletero haga clic antes de cerrar la tapa. (Vea Diagrama 4)

6. Comience a despachar. (Vea Diagrama 5)

Max

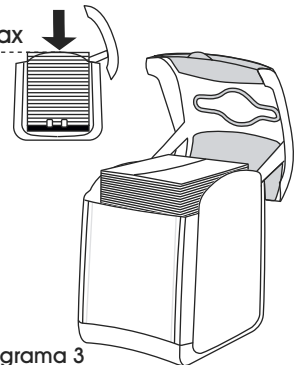


Diagrama 3

Diagrama 4

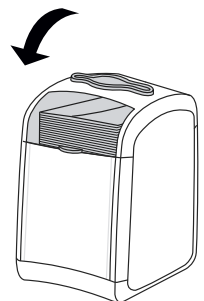
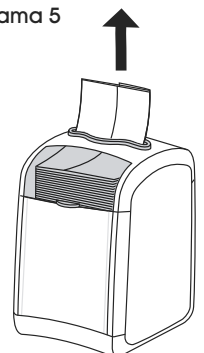
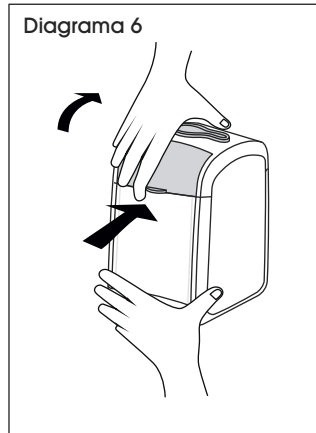


Diagrama 5

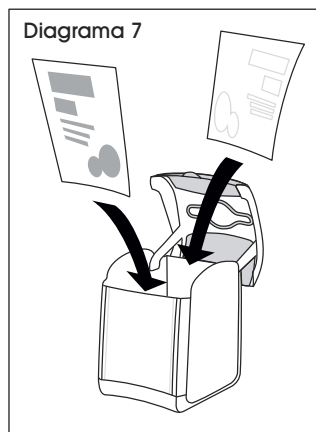


CARATERÍSTICA AD-A-GLANCE®

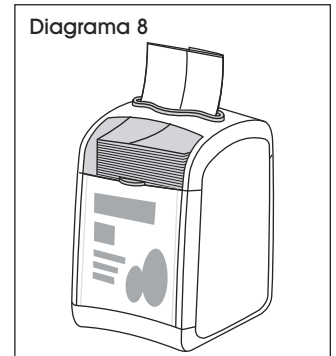
1. Para usar la característica Ad-a-Glance®, abra el servilletero. (Vea Diagrama 6)



2. Saque los cartones en cada lado del servilletero. (Vea Diagrama 7)



3. Use las plantillas de adaglance.torkusa.com para diseñar el arte. El tamaño del inserto Ad-a-Glance® es 2.9 x 3.9".
4. Inserte el arte personalizado en el despachador y cierre la puerta. (Vea Diagrama 8)

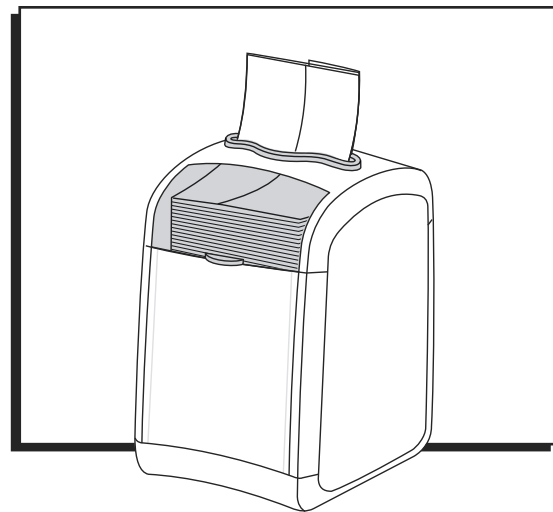


LIMPIEZA

Limpie con un trapo usando agua y jabón. Use limpiadores suaves de ser necesario. No use abrasivos. El servilletero no es apto para lavavajillas.

ULINE

800-295-5510
uline.mx

**TORK XPRESSNAP FIT^{MD} —
DISTRIBUTEUR DE
SERVIETTES DE TABLE****CHARGEMENT**

REMARQUE : Utilisez uniquement les serviettes Tork Xpressnap Fit^{MD} (modèles S-24380 et S-24381) dans le distributeur. Les serviettes universelles ne seront pas distribuées efficacement par ce distributeur.

1. Pour ouvrir le distributeur, placez la main sur le dessus et le pouce sous la lèvre située à l'avant du distributeur. (Voir Figure 1)
2. Pressez légèrement le couvercle (à l'avant et à l'arrière) et appuyez le pouce sous la lèvre à l'avant du distributeur. (Voir Figure 1)
3. En serrant le couvercle, les loquets se déverrouillent légèrement. Tirez la lèvre vers le haut pour ouvrir le couvercle. (Voir Figure 1)
4. Chargez les serviettes dans le distributeur. (Voir Figure 2)

Figure 1

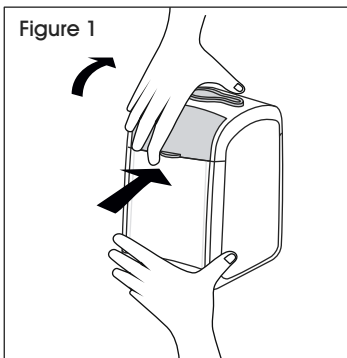
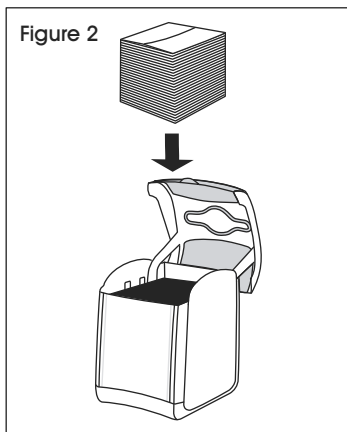


Figure 2



REMARQUE : Le distributeur peut contenir un maximum de 336 serviettes à la fois. Ne dépassez pas la ligne de remplissage. (Voir Figure 3)

5. Avant de fermer le couvercle, poussez les serviettes vers le bas jusqu'à entendre un déclic. (Voir Figure 4)
6. Commencez la distribution des serviettes. (Voir Figure 5)

Maximum

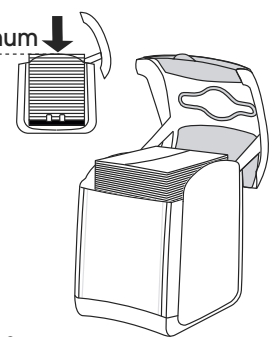


Figure 3

Figure 4

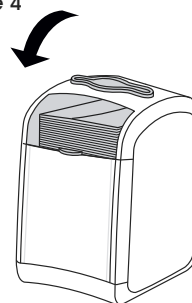
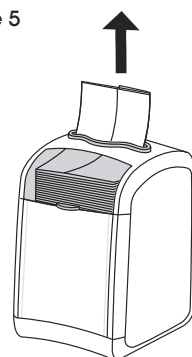
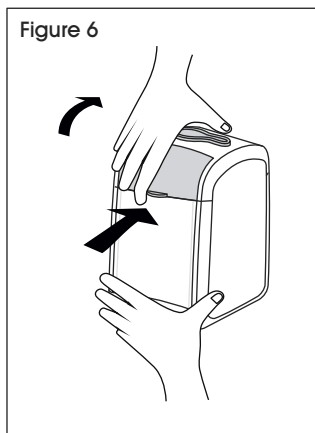


Figure 5

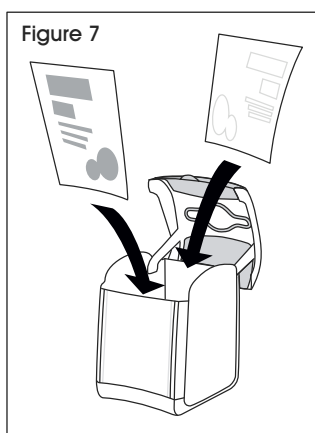


FONCTION AD-A-GLANCE^{MD}

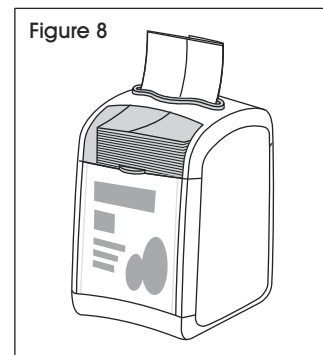
1. Pour utiliser la fonction Ad-a-Glance^{MD}, ouvrez le distributeur. (Voir Figure 6)



2. Retirez les fiches de chaque côté du distributeur. (Voir Figure 7)



3. Servez-vous des modèles sur adaglance.torkusa.com pour créer votre propre présentation graphique. La taille des fiches Ad-a-Glance^{MD} est de 2,9 x 3,9 po.
4. Insérez les fiches personnalisées et fermez la porte du distributeur. (Voir Figure 8)



NETTOYAGE

Essayez le distributeur à l'aide d'un chiffon en utilisant de l'eau et du savon. Si nécessaire, utilisez des nettoyeurs doux. N'utilisez pas de produits abrasifs. Le distributeur ne va pas au lave-vaisselle.

ULINE

1-800-295-5510
uline.ca