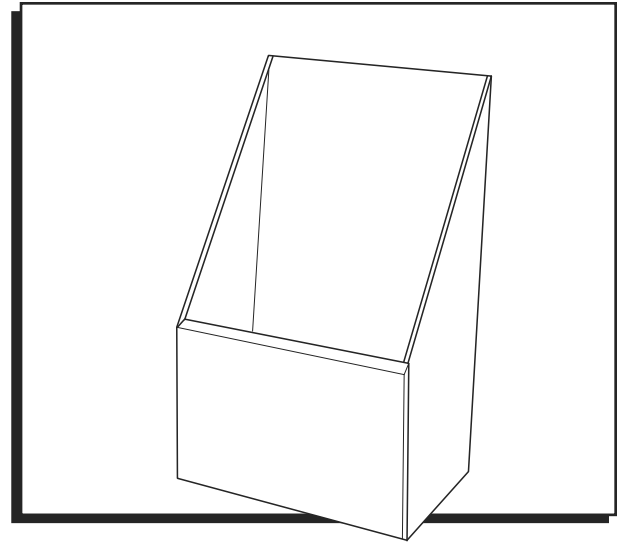


ULINE S-15194

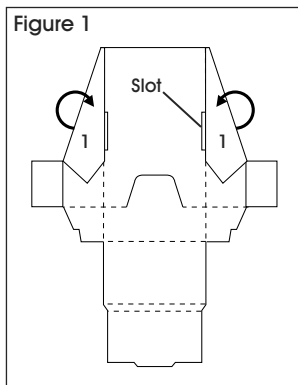
CORRUGATED PAMPHLET HOLDER

1-800-295-5510
uline.com

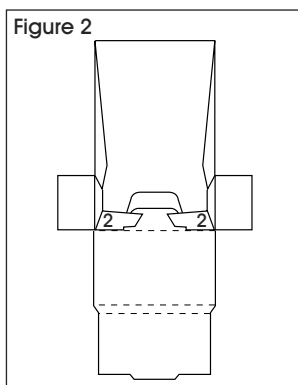


ASSEMBLY

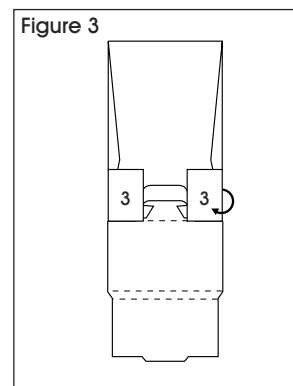
1. Fold in the sides along score lines and tuck side flaps (1) into slots. (See Figure 1)



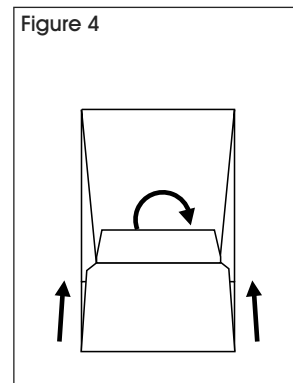
2. Fold in corner flaps (2) and place the unit upright. Back support should pop out. (See Figure 2)

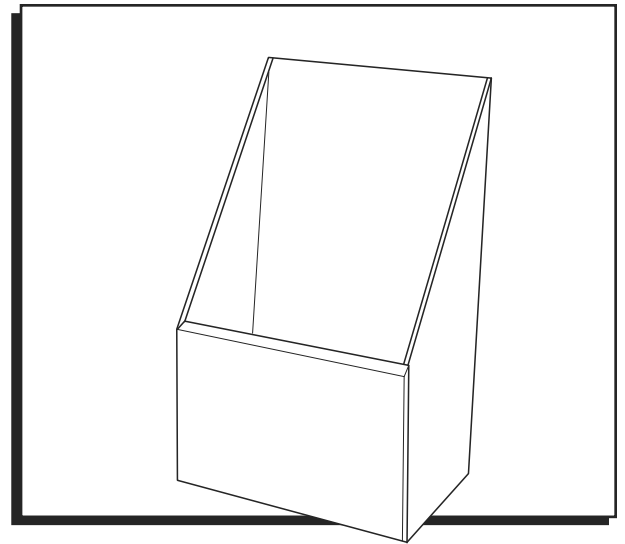


3. Fold front flaps (3) in to create a front. (See Figure 3)



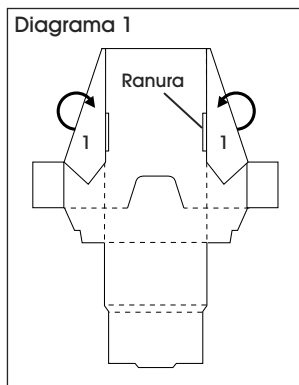
4. Fold the front in and over, tucking it in securely. (See Figure 4)



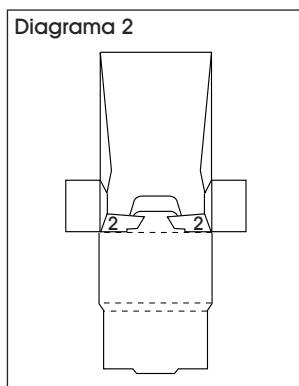


ENSAMBLE

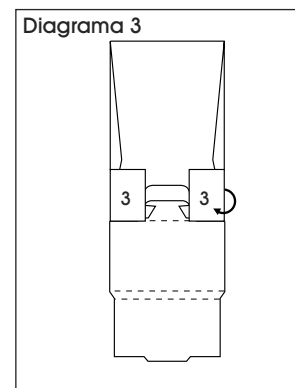
1. Doble los laterales a lo largo de la línea punteada e inserte las solapas laterales (1) en las ranuras. (Vea Diagrama 1)



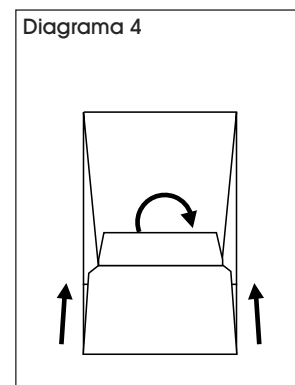
2. Doble las solapas de las esquinas (2) y enderece la unidad. El respaldo debe sobresalir. (Vea Diagrama 2)



3. Doble las solapas delanteras (3) hacia adentro para crear un frente. (Vea Diagrama 3)

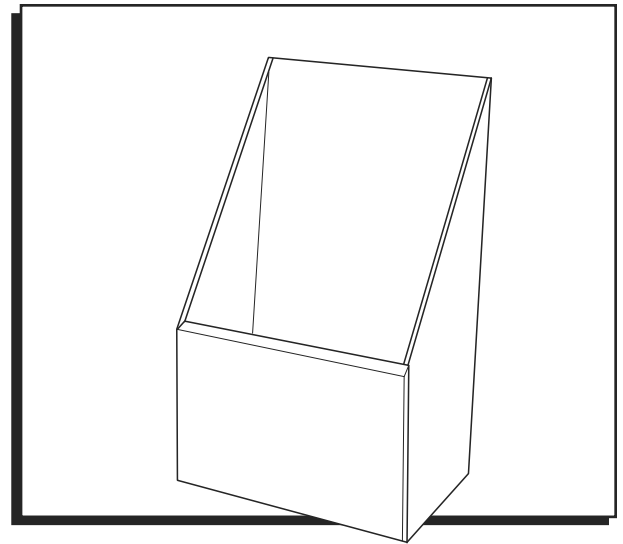


4. Doble bien la parte delantera por encima y hacia adentro. (Vea Diagrama 4)



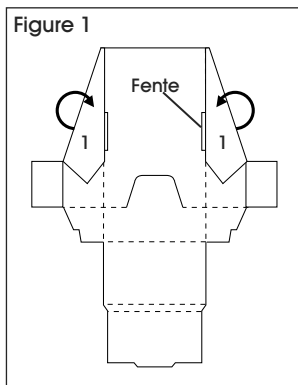
ULINE S-15194
PORTE-BROCHURES
EN CARTON ONDULÉ

1 800 295-5510
uline.ca

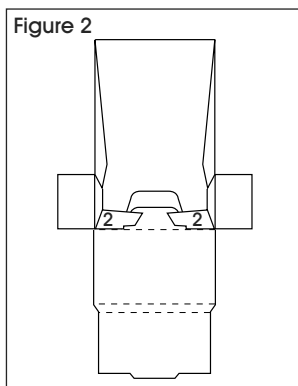


ASSEMBLAGE

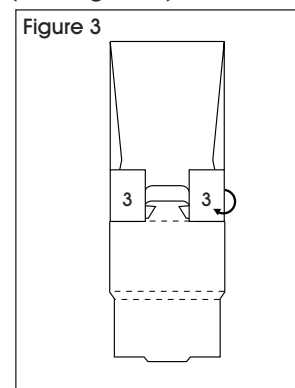
1. Pliez les côtés vers l'intérieur le long des lignes de pliure et insérez les rabats latéraux (1) dans les fentes. (Voir Figure 1)



2. Pliez les rabats de coin (2) vers l'intérieur et placez le porte-brochure à la verticale. Le support arrière doit ressortir. (Voir Figure 2)



3. Pliez les rabats avant (3) vers l'intérieur pour créer la face avant. (Voir Figure 3)



4. Pliez la face avant vers l'intérieur et repliez-la en la rentrant bien en place. (Voir Figure 4)

