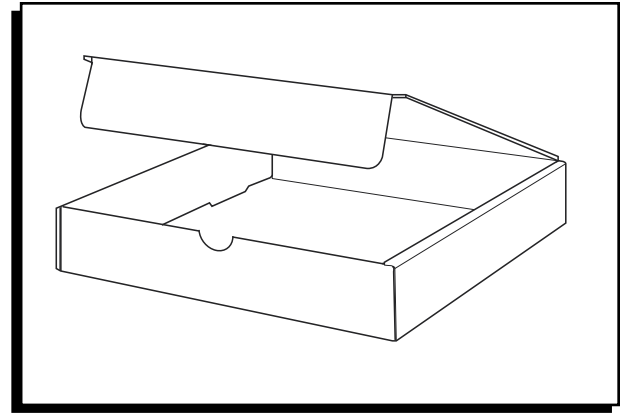


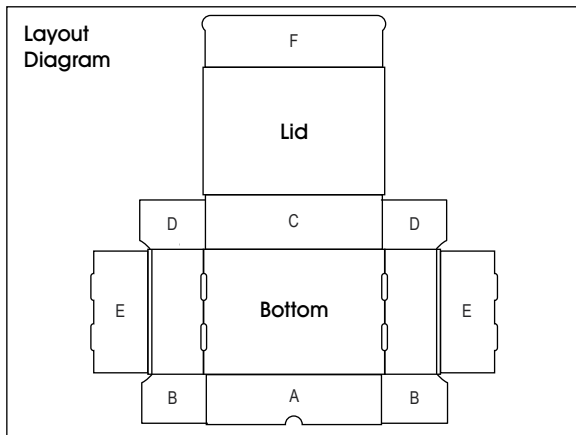
ULINE

LITERATURE MAILER

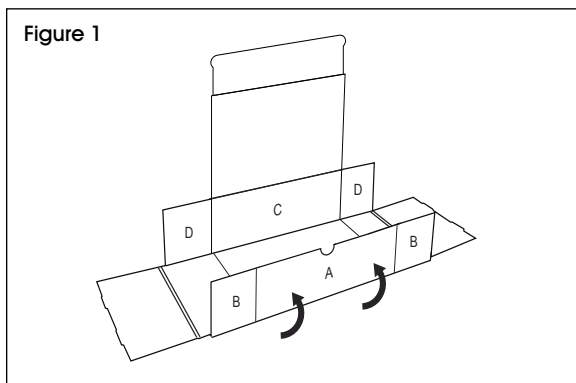
1-800-295-5510
uline.com



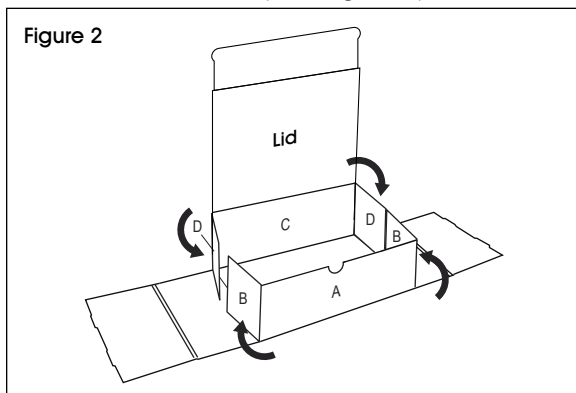
ASSEMBLY



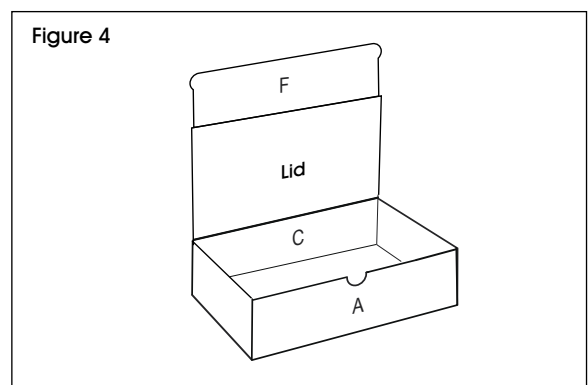
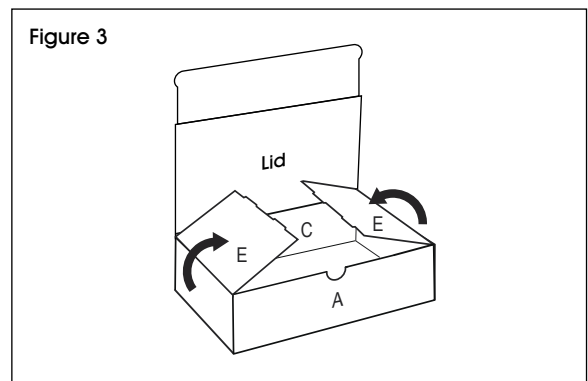
1. Fold panels A and C straight up so they are perpendicular to the bottom. (See Figure 1)



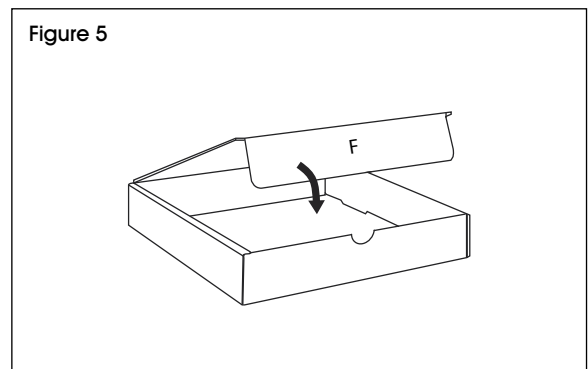
2. Fold in flaps B and D. (See Figure 2)

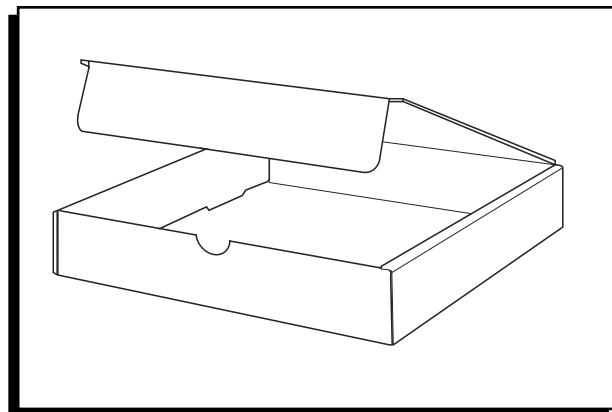
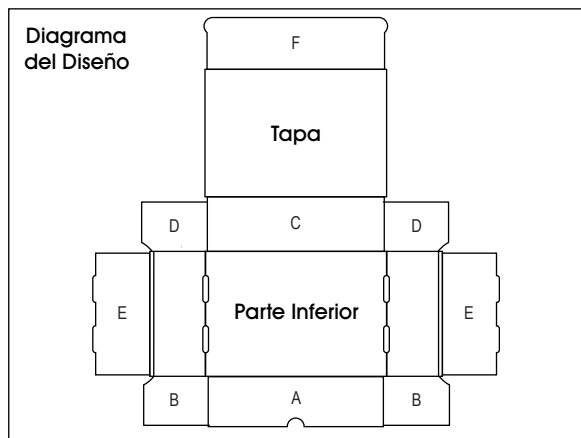


3. To form sides of box, fold ends E up and over flaps B and D, tucking into slots at the bottom. (See Figures 3-4)

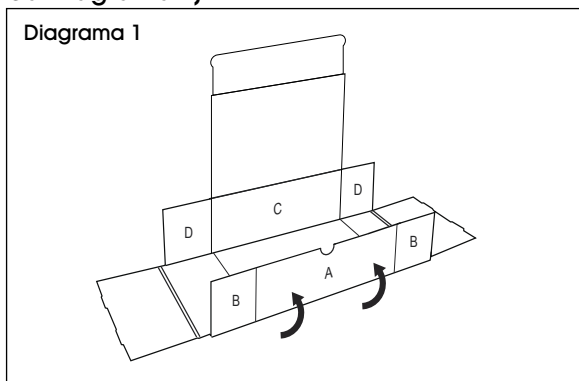


4. Fold down lid and tuck panel F into mailer to close. (See Figure 5)

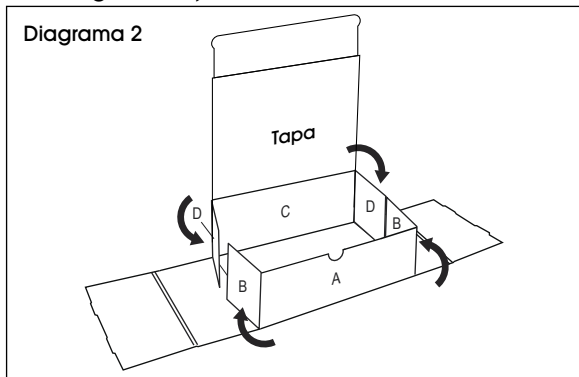


**ENSAMBLE**

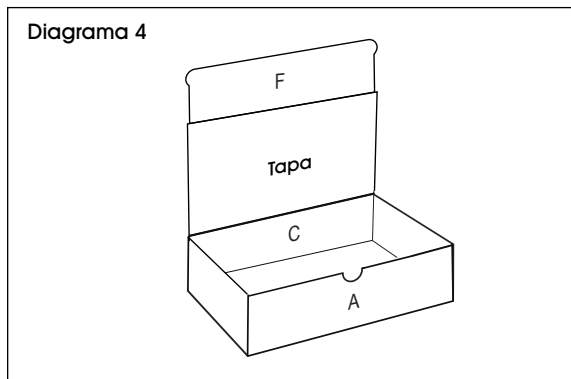
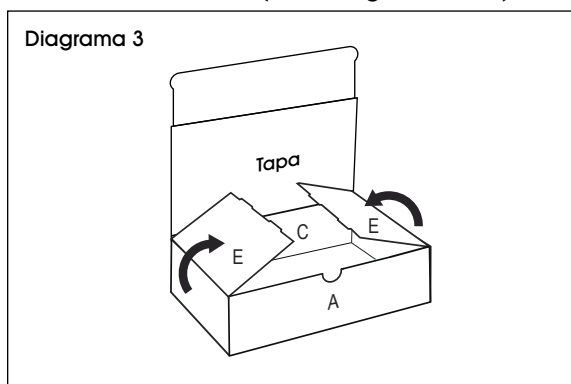
1. Doble los paneles A y C hacia arriba, de manera que queden perpendiculares a la parte de abajo. (Vea Diagrama 1)



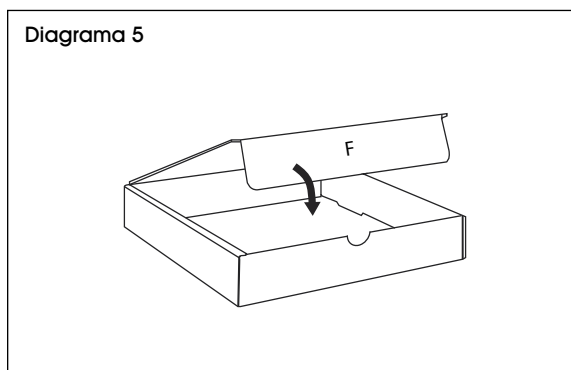
2. Doble hacia adentro las solapas B y D. (Vea Diagrama 2)

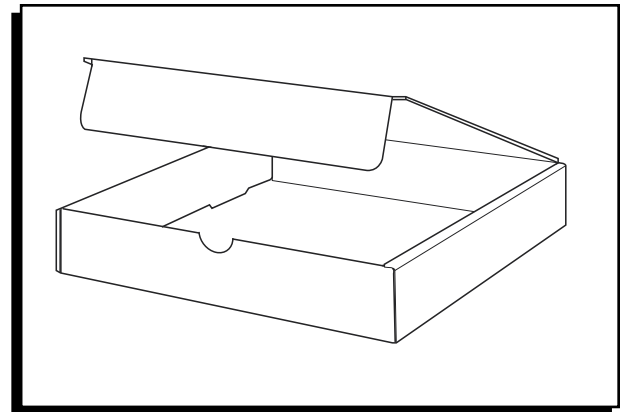
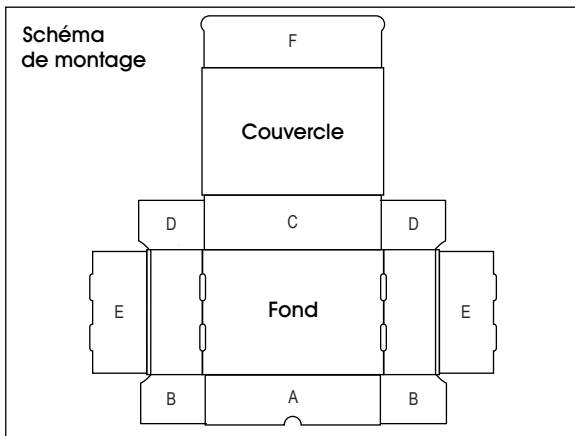


3. Para formar los laterales de la caja, doble los extremos E hacia arriba y sobre las solapas B y D metiendo las pestañas en el fondo. (Vea Diagramas 3-4)

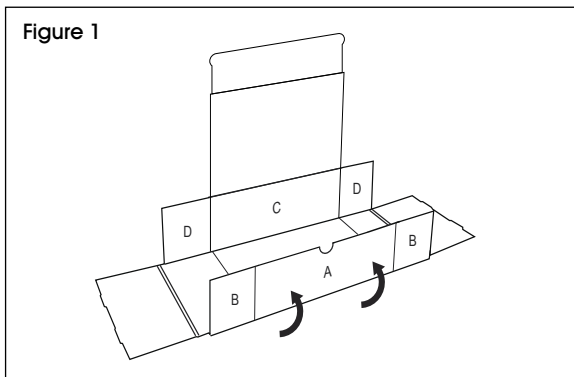


4. Doble la tapa hacia abajo y meta el panel F en la caja para cerrar. (Vea Diagrama 5)

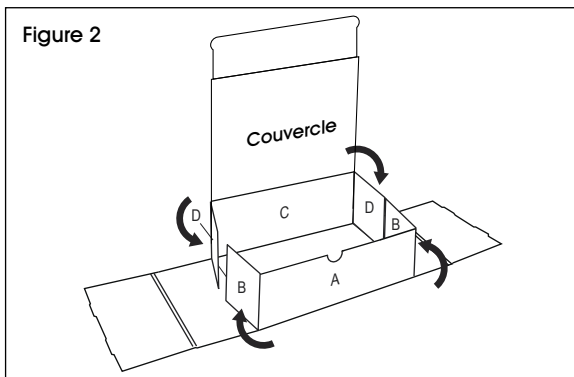


**ASSEMBLAGE**

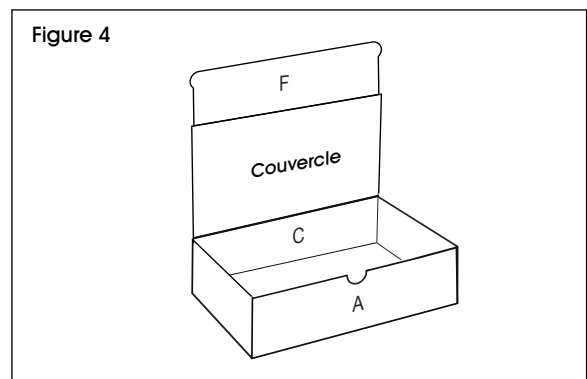
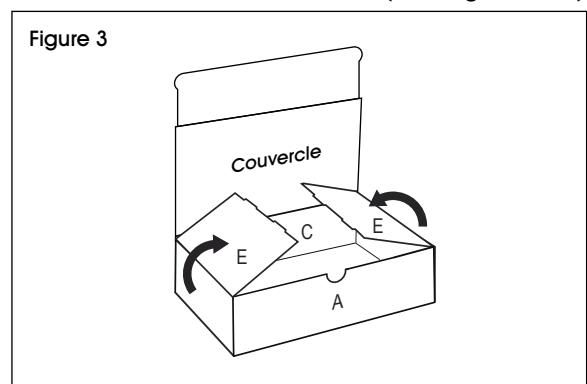
1. Pliez les panneaux A et C vers le haut afin qu'ils soient perpendiculaires avec le fond de la boîte. (Voir Figure 1)



2. Pliez les rabats B et D vers l'intérieur. (Voir Figure 2)



3. Pour former les côtés de la boîte, pliez les rabats E vers le haut et par dessus les rabats B et D. Insérez-les ensuite dans les fentes sur le fond. (Voir Figures 3-4)



4. Pliez le couvercle de la boîte et insérez la languette F à l'intérieur de la boîte pour la fermer. (Voir Figure 5)

