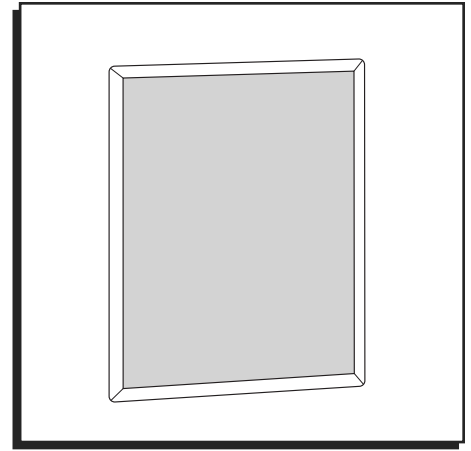


ULINE

SNAP EDGE FRAME SIGN

1-800-295-5510
uline.com

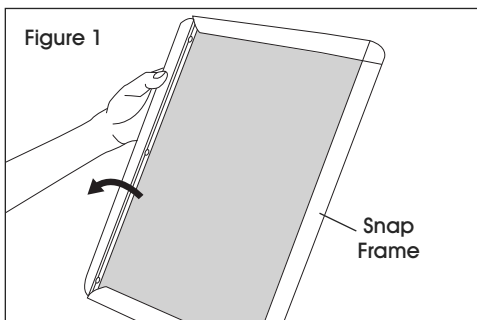


ASSEMBLY

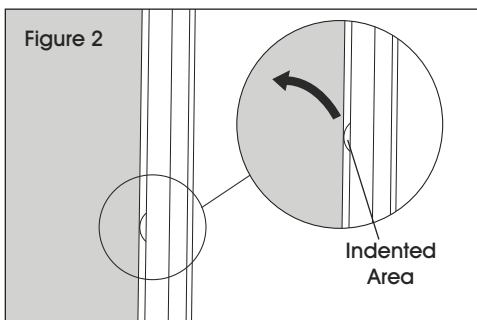


CAUTION! Sign holder may have sharp edges. Use extreme caution to avoid outside and inside corners of frame edges.

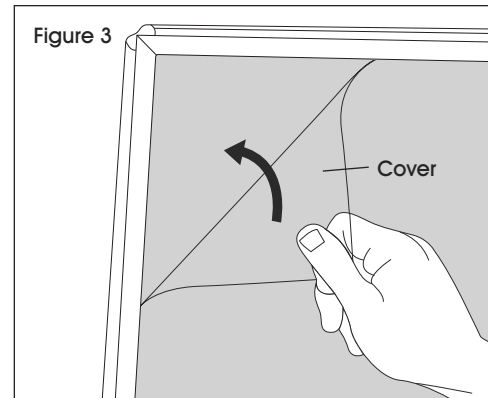
1. Flip open each side of the snap frame. (See Figure 1)



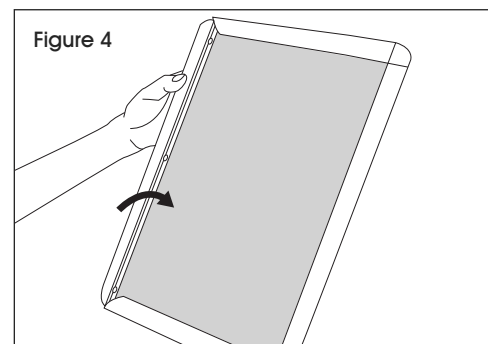
2. Remove the cover by lifting the indented area on the side of the cover. (See Figure 2)

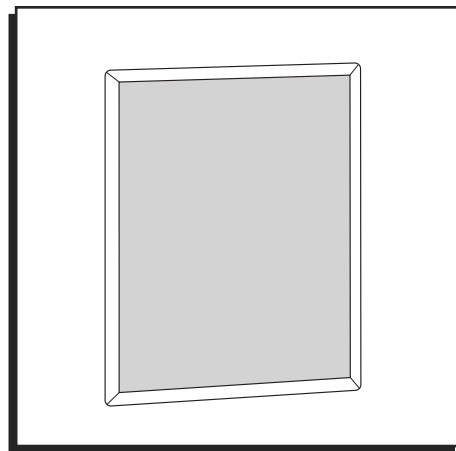


3. Place poster in frame and replace the cover. (See Figure 3)



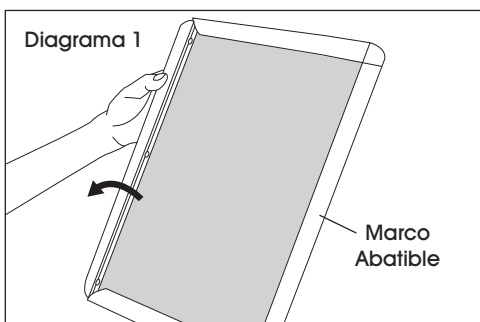
4. While holding poster and cover in frame, snap the edges of the frame back into the closed position, avoiding the corners of the frame. (See Figure 4)



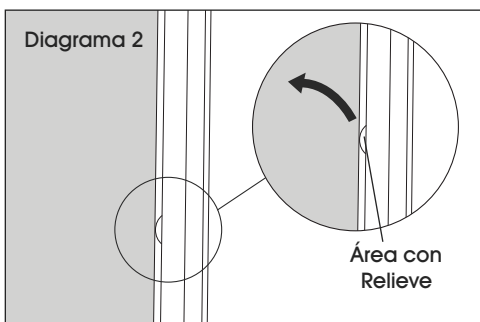
**ENSAMBLE**

¡PRECAUCIÓN! El marco puede tener bordes filosos. Tenga mucho cuidado para evitar las esquinas exteriores e interiores de los bordes del marco.

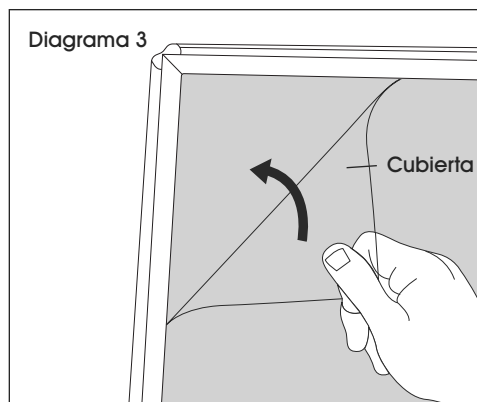
1. Abra cada lado del marco abatible. (Vea Diagrama 1)



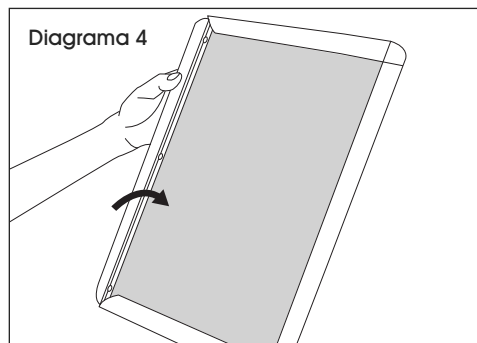
2. Retire la cubierta levantando el área con relieve en el lado de la cubierta. (Vea Diagrama 2)

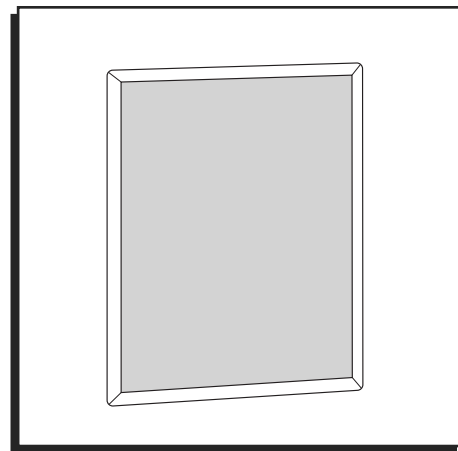


3. Coloque el póster en el marco y acomode la cubierta. (Vea Diagrama 3)



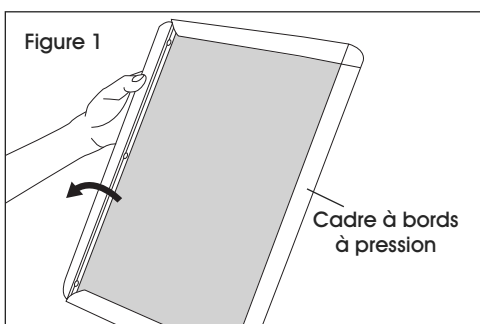
4. Mientras sostiene el póster y la cubierta en el marco, ajuste a presión las orillas del marco de nuevo en la posición cerrada, evitando las esquinas del marco. (Vea Diagrama 4)



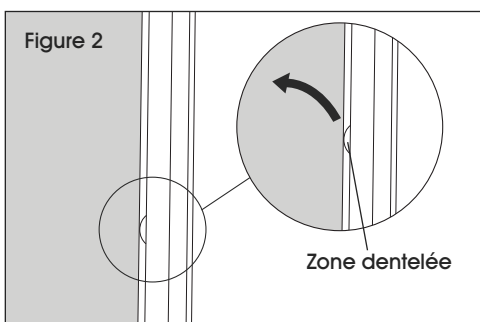
**ASSEMBLAGE**

MISE EN GARDE! Les supports d'enseigne peuvent avoir des bords tranchants. Faites preuve d'une extrême prudence pour éviter les coins extérieurs et intérieurs des bords du cadre.

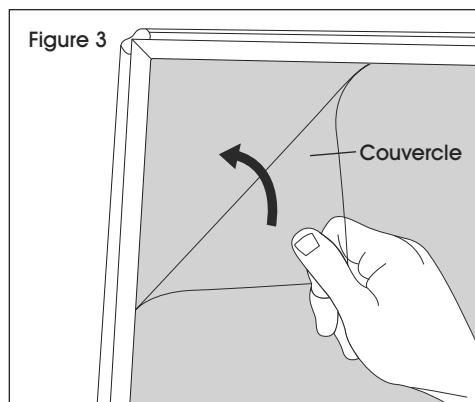
1. Ouvrez chaque côté du cadre à bords à pression. (Voir Figure 1)



2. Retirez le couvercle en soulevant la zone dentelée sur le côté du couvercle. (Voir Figure 2)



3. Placez l'affiche dans le cadre et remettez le couvercle en place. (Voir Figure 3)



4. Tout en maintenant l'affiche et le couvercle dans le cadre, enclenchez les bords du cadre en position fermée, en évitant les coins du cadre. (Voir Figure 4)

