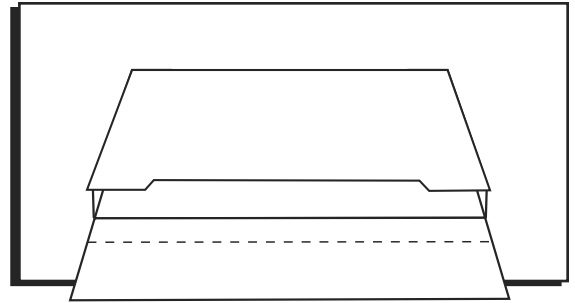


ULINE

S-3332, S-3333, S-3334
S-13355, S-15021, S-15022
S-20995

JUMBO WHITE FOLD-OVER MAILER

1-800-295-5510
uline.com



ASSEMBLY

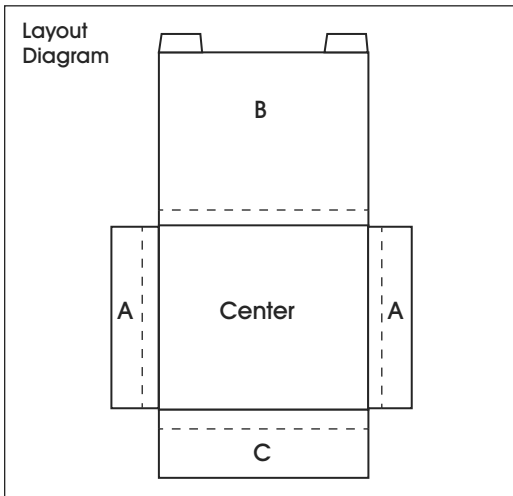


Figure 1

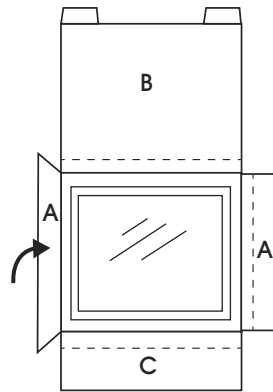


Figure 2

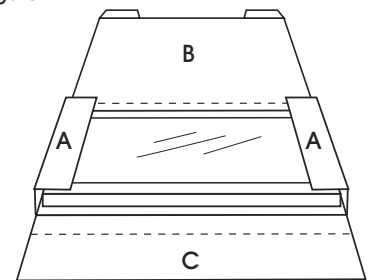


Figure 3

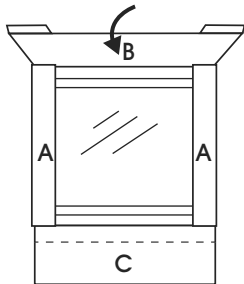


Figure 4

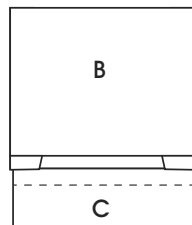


Figure 5

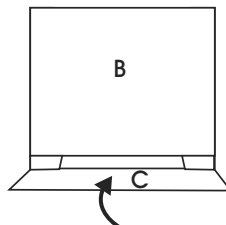


Figure 6

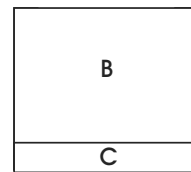
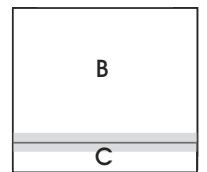


Figure 7



1. Place product in center of mailer. (See Figure 1)
2. Fold A panels over product. (See Figures 1-2)
3. Fold B panel over A panels. (See Figures 3-4)
4. Fold C panel over B panel. (See Figures 5-6)
5. Seal B and C panels closed with tape. (See Figure 7)

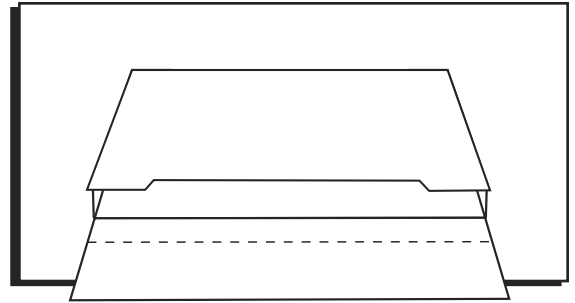
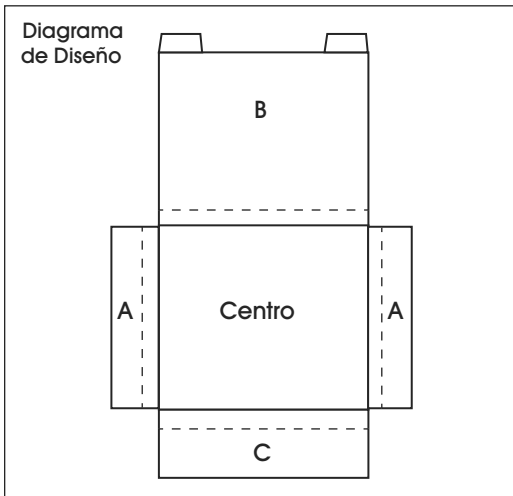
**ENSAMBLE**

Diagrama 1

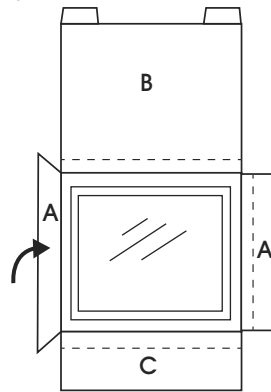


Diagrama 2

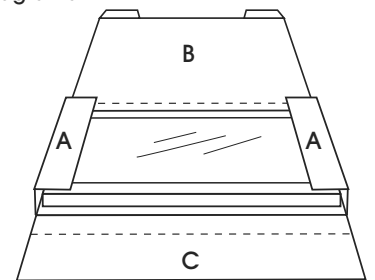


Diagrama 3

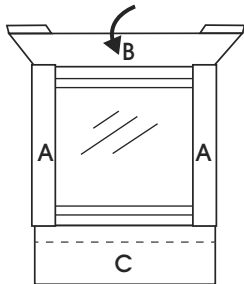


Diagrama 4

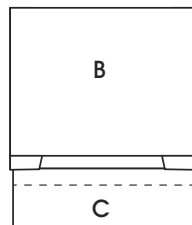


Diagrama 5

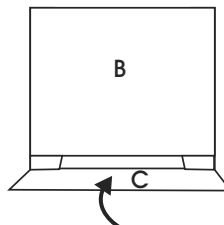


Diagrama 6

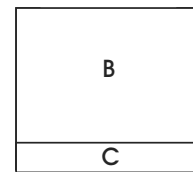
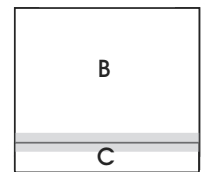


Diagrama 7



1. Coloque el producto en el centro de la caja.
(Vea Diagrama 1)
2. Doble las solapas A sobre el producto.
(Vea Diagramas 1-2)
3. Doble la solapa B sobre las solapas A.
(Vea Diagramas 3-4)

4. Doble la solapa C sobre la solapa B.
(Vea Diagramas 5-6)
5. Selle las solapas B y C con cinta adhesiva.
(Vea Diagrama 7)

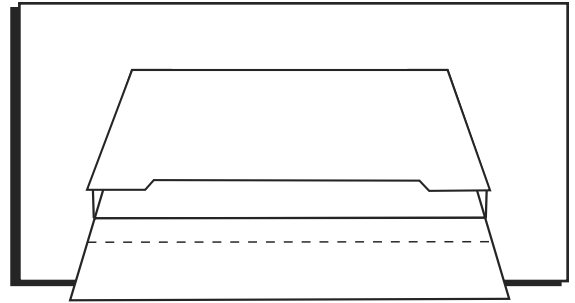
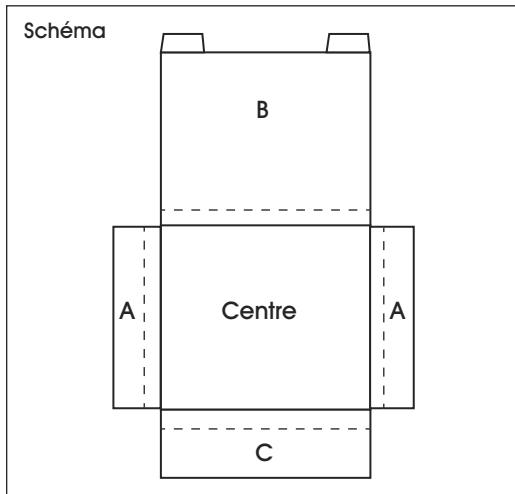
ULINES-3332, S-3333, S-3334
S-13355, S-15021, S-15022
S-20995**BOÎTE D'EXPÉDITION
À RABAT FORMAT
GÉANT – BLANC**1-800-295-5510
uline.ca**ASSEMBLAGE**

Figure 1

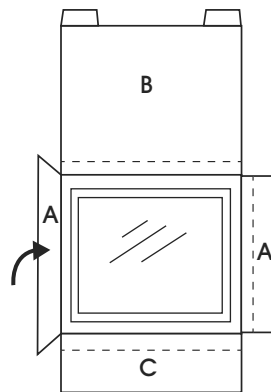


Figure 2

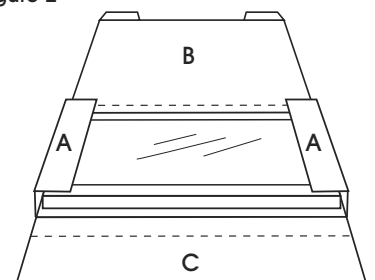


Figure 3

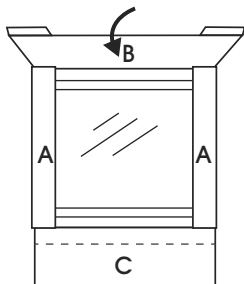


Figure 4

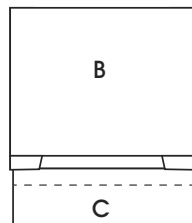


Figure 5

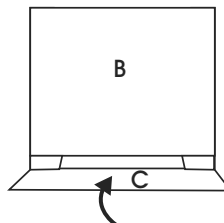


Figure 6

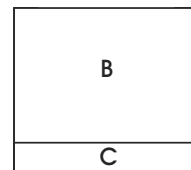
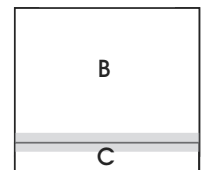


Figure 7



1. Placez le produit au centre de la boîte d'expédition. (Voir Figure 1)
2. Pliez les rabats A sur le produit. (Voir Figures 1 et 2)
3. Pliez le rabat B par-dessus les rabats A. (Voir Figures 3 et 4)
4. Pliez le rabat C par-dessus le rabat B. (Voir Figures 5 et 6)
5. Fermez les rabats B et C avec du ruban adhésif. (Voir Figure 7)