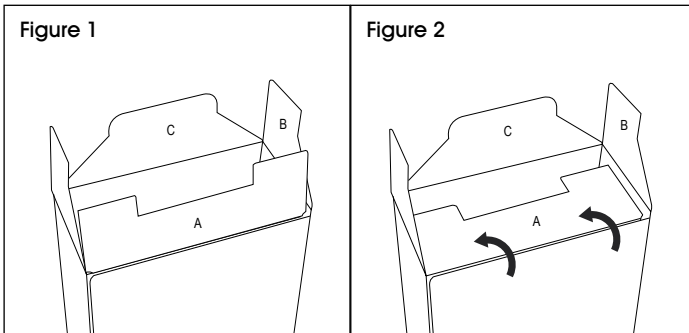
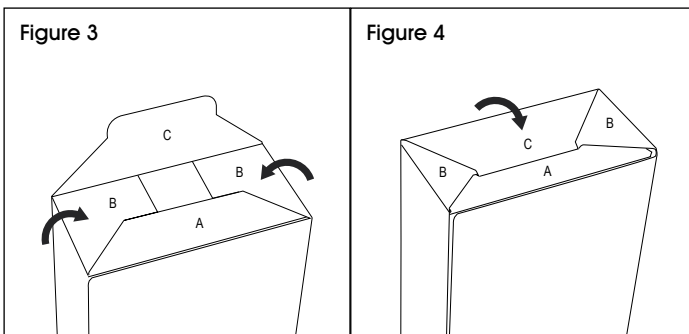


ASSEMBLY

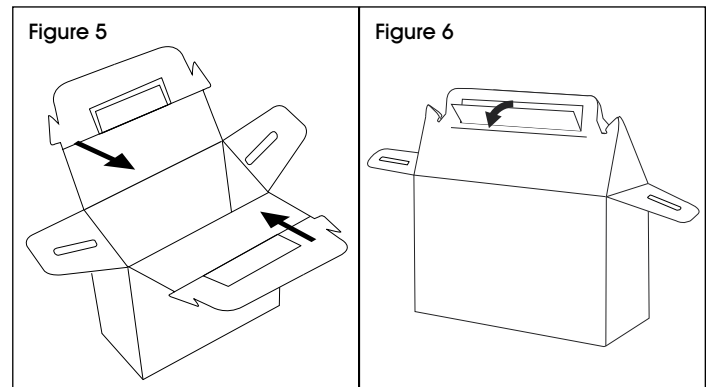
1. Open and crease flattened edges to create box. Flip upside down to assemble bottom. (See Figure 1)
2. Fold down flap (A). (See Figure 2)



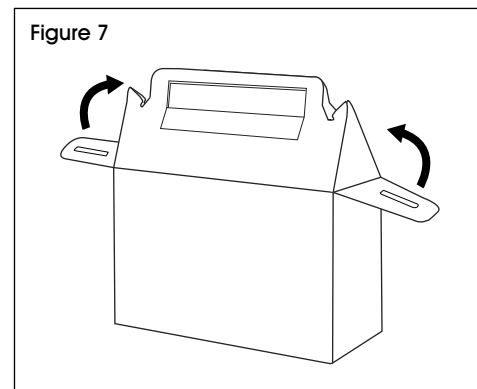
3. Fold down flaps (B), tucking centers under opening on flap (A). (See Figure 3)
4. Fold down flap (C) over flaps (B), tucking in center under opening on flap (A). (See Figure 4)

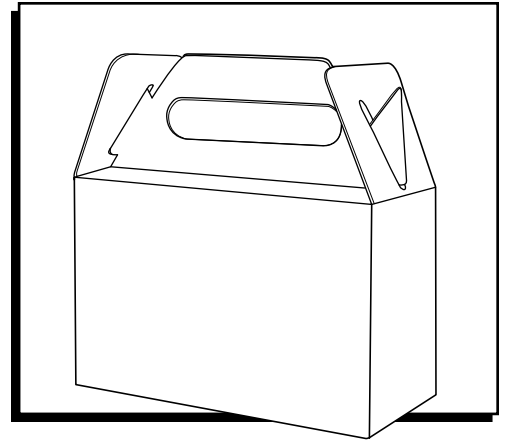


5. Bring together sides with handles. (See Figure 5)
6. Fold over piece between handles. (See Figure 6)

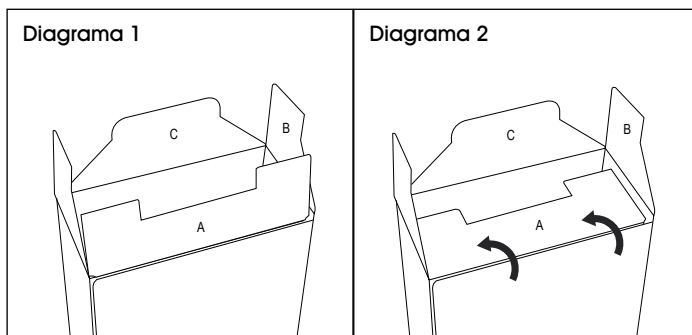


7. Tuck edges into openings on side flaps. (See Figure 7)

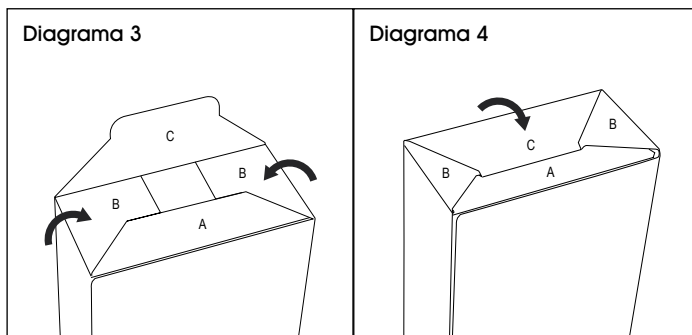


**ENSAMBLE**

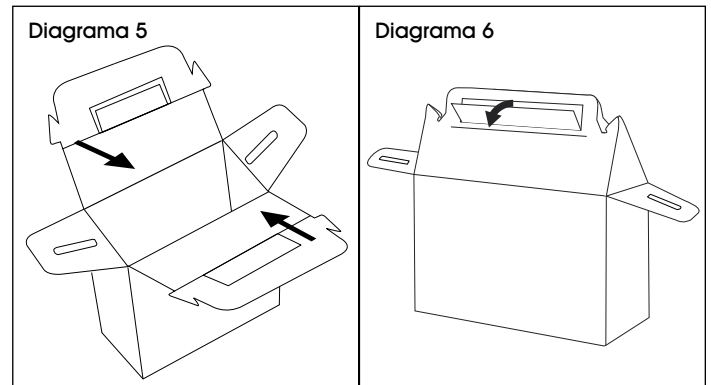
1. Abra y pliegue los bordes planos para crear la caja. Dé vuelta para ensamblar la parte inferior. (Vea Diagrama 1)
2. Doble hacia abajo la solapa (A). (Vea Diagrama 2)



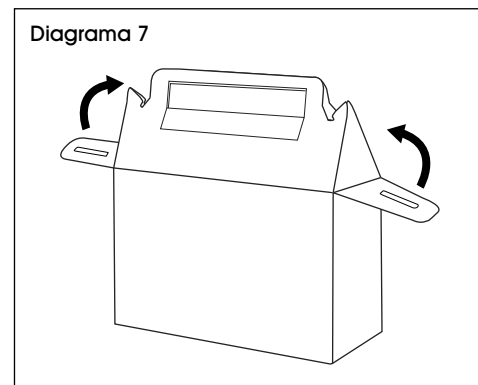
3. Doble hacia abajo las solapas (B), introduciendo los centros debajo de la abertura en la solapa (A). (Vea Diagramas 3)
4. Doble hacia abajo la solapa (C) sobre las solapas (B) introduciendo el centro debajo de la abertura en la solapa (A). (Vea Diagrama 4)

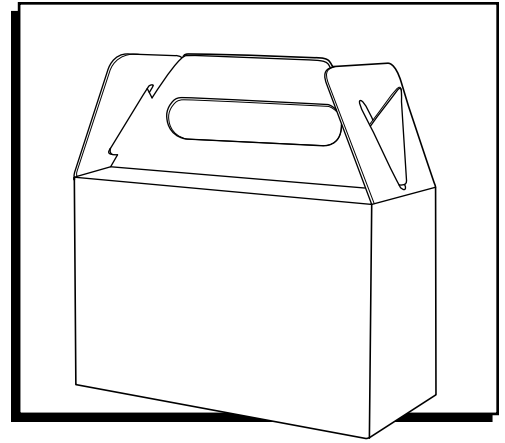


5. Junte los lados con asas. (Vea Diagrama 5)
6. Doble la pieza que está entre las asas. (Vea Diagrama 6)



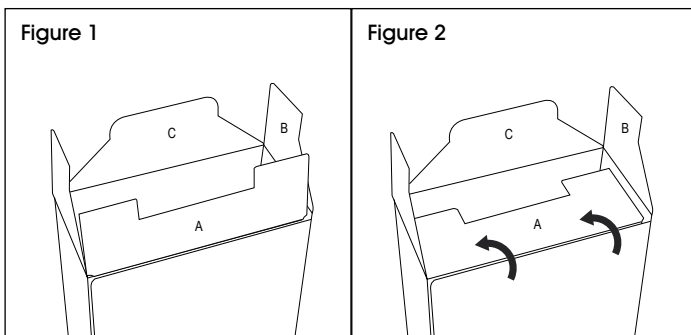
7. Introduzca los bordes en las aberturas de las solapas laterales. (Vea Diagrama 7)



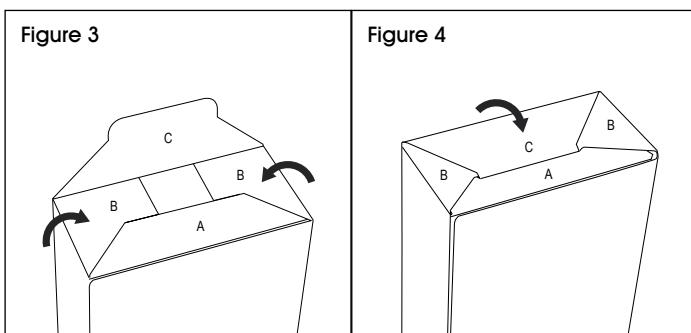


ASSEMBLAGE

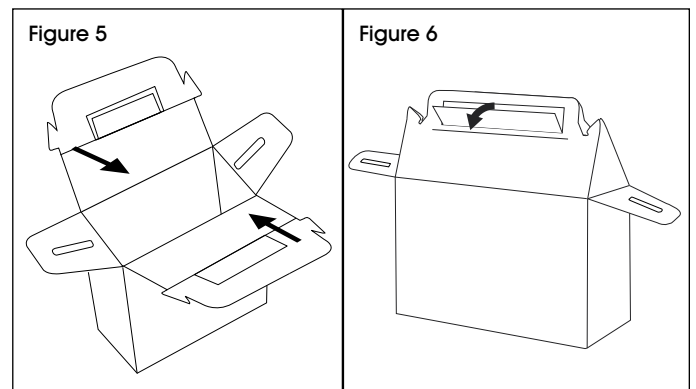
1. Ouvrez et pliez les bords aplatis pour créer la boîte. Mettez-la à l'envers pour assembler le fond. (Voir Figure 1)
2. Pliez le rabat (A) vers le bas. (Voir Figure 2)



3. Pliez les rabats (B) et insérez-les dans l'ouverture sur le rabat (A). (Voir Figure 3)
4. Pliez le rabat (C) vers le bas, en dessus du rabat (B) et insérez-les dans l'ouverture sur le rabat (A). (Voir Figure 4)



5. Rassemblez les côtés avec poignées. (Voir Figure 5)
6. Pliez le morceau entre les poignées. (Voir Figure 6)



7. Insérez les bouts dans les ouvertures sur les rabats latéraux. (Voir Figure 7)

