

## ASSEMBLY

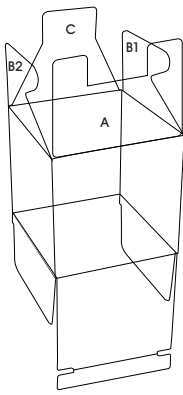


Figure 1

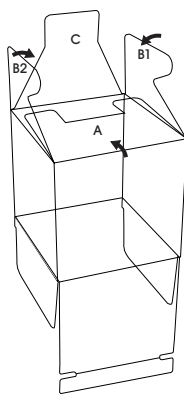


Figure 2

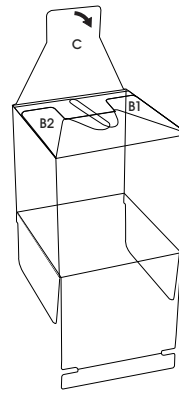


Figure 3

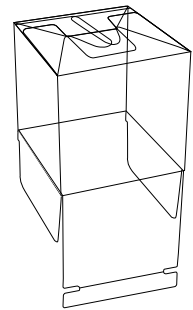


Figure 4

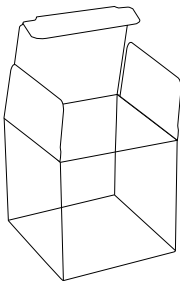


Figure 5

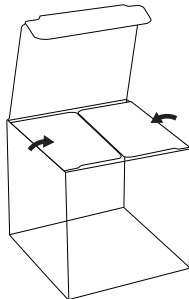


Figure 6

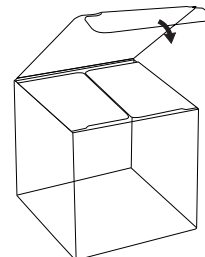


Figure 7

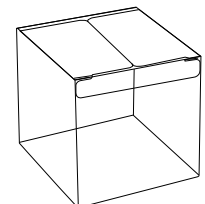


Figure 8

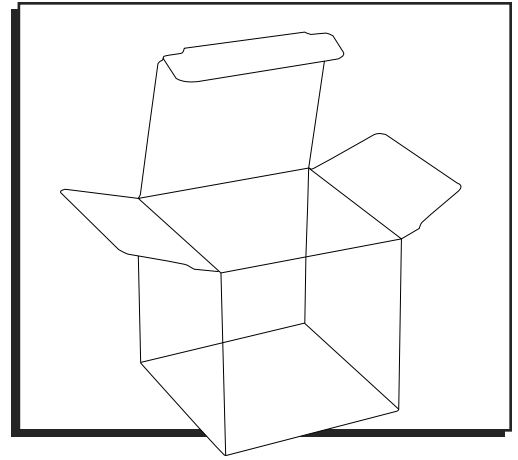
1. Open and crease edges to create box.

### TO CLOSE BOTTOM

1. Crease edges. (See Figure 1)
2. Fold down flap A. (See Figure 2)
3. Fold down flaps B1 and B2, tucking in tabs under opening on flap A. (See Figures 2-3)
4. Fold down flap C over flaps B1 and B2, tucking into center opening of flap A. (See Figures 3-4)

### TO CLOSE TOP

1. Flip box over and crease edges. (See Figure 5)
2. Fold down side flaps. (See Figure 6)
3. Tuck top closed. (See Figures 7-8)



## ENSAMBLE

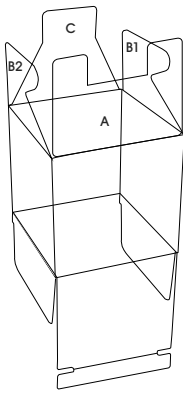


Diagrama 1

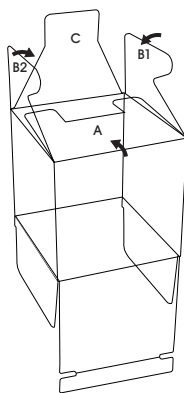


Diagrama 2

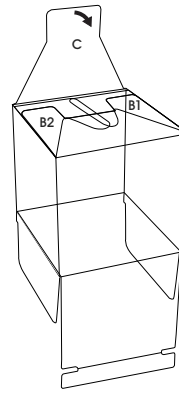


Diagrama 3

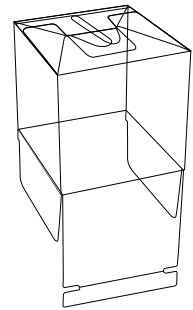


Diagrama 4

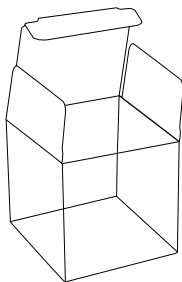


Diagrama 5

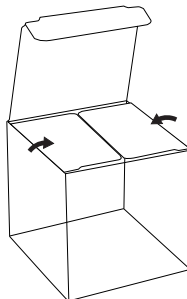


Diagrama 6

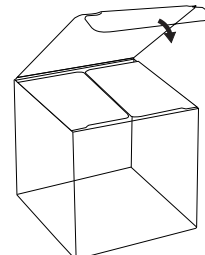


Diagrama 7

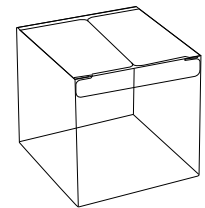


Diagrama 8

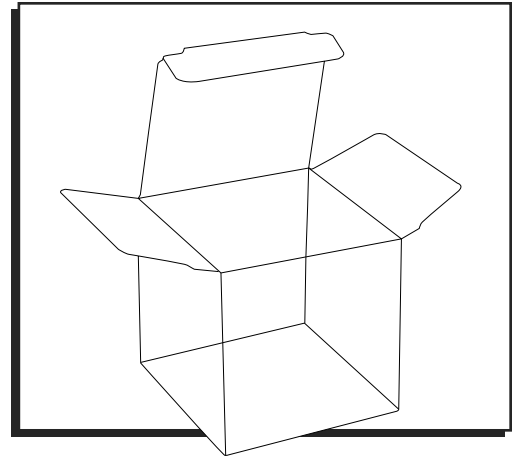
1. Abra y pliegue los bordes para crear la caja.

### PARA CERRAR LA BASE

1. Pliegue los bordes. (Vea Diagrama 1)
2. Doble la solapa A. (Vea Diagrama 2)
3. Doble las solapas B1 y B2, insertándolas por debajo de la abertura de la solapa A. (Vea Diagramas 2-3)
4. Doble la solapa C sobre las solapas B1 y B2 insertándolas en el centro de la abertura de la solapa A. (Vea Diagramas 3-4)

### PARA CERRAR LA TAPA

1. Voltee la caja y pliegue los bordes. (Vea Diagrama 5)
2. Doble las solapas laterales. (Vea Diagrama 6)
3. Inserte la tapa hasta cerrar. (Vea Diagramas 7-8)



## ASSEMBLAGE

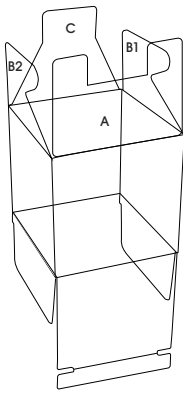


Figure 1

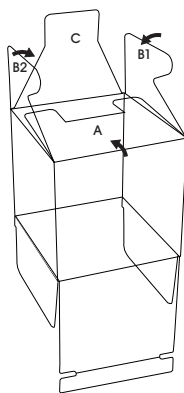


Figure 2

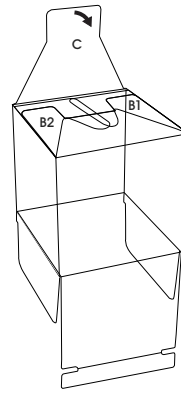


Figure 3

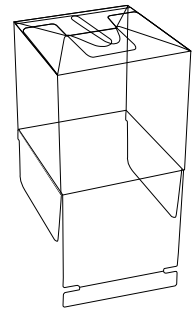


Figure 4

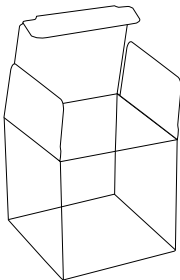


Figure 5

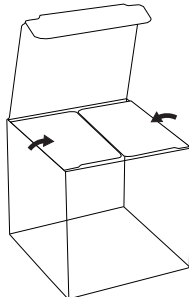


Figure 6

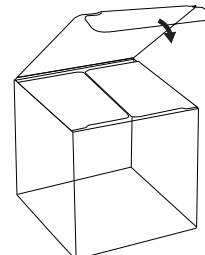


Figure 7

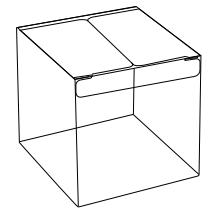


Figure 8

1. Ouvrez et pliez les rebords pour donner la forme de la boîte.

### POUR FERMER LE FOND

1. Pliez les rebords. (Voir Figure 1)
2. Pliez le rabat A vers le bas. (Voir Figure 2)
3. Pliez les rabats B1 et B2 vers le bas et rentrez les languettes sous l'ouverture du rabat A. (Voir Figures 2 et 3)
4. Pliez le rabat C par-dessus les rabats B1 et B2 en le rentrant dans l'ouverture centrale du rabat A. (Voir Figures 3 et 4)

### POUR FERMER LE COUVERCLE

1. Retournez la boîte et pliez les rebords. (Voir Figure 5)
2. Pliez les rabats latéraux vers le bas. (Voir Figure 6)
3. Fermez le couvercle en faisant rentrer le rabat. (Voir Figures 7 et 8)