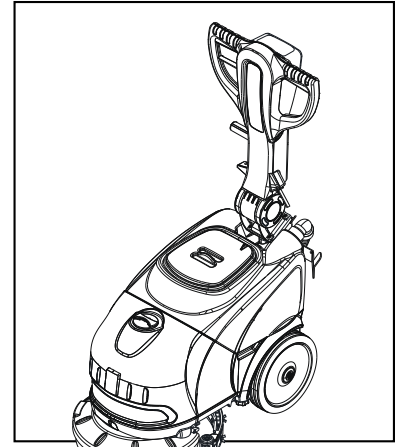


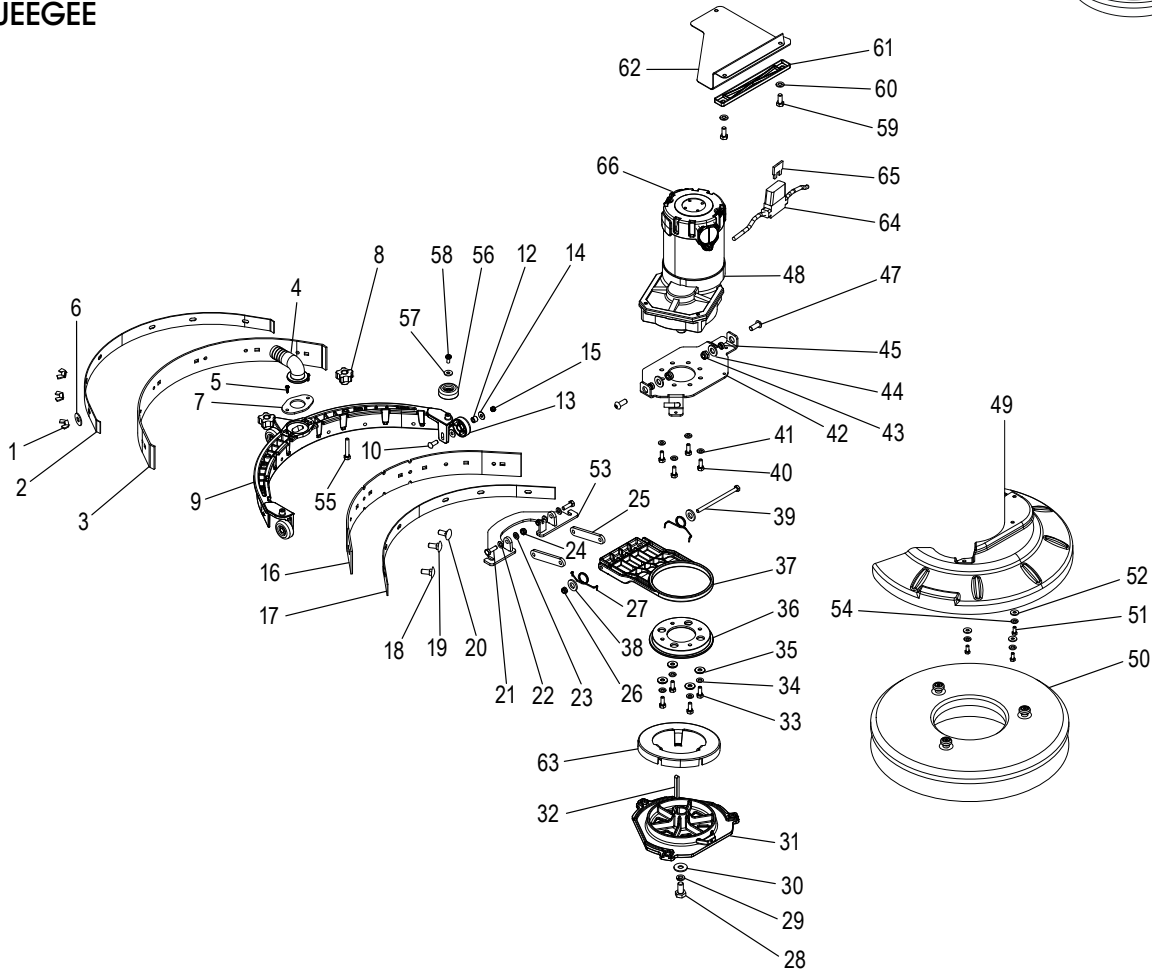
ULINE H-12433

COMPACT AUTO FLOOR SCRUBBER WITH LITHIUM-ION BATTERY

1-800-295-5510
uline.com



SQUEEGEE



SQUEEGEE PARTS LIST

#	DESCRIPTION	QTY.	ULINE PART NO.	MFG. PART NO.
1	Nut M5*	6	H-8685	T80250
2	Bracket*	1	H-8686	T80251
3	Blade Squeegee Latex Rear CT15	1	H-8041-RSQG	MPVR05918
4	Connector Elbow Fitting CT15-CT30*	1	H-8686	T80251
5	Screw TCB TC 5 x 12 UNI 9707 TZ*	2	H-8697	T80277
6	Washer D. 5 x 14 INX*	6	H-8685	T80250

*Part of a kit.

COMPACT AUTO FLOOR SCRUBBER WITH LITHIUM-ION BATTERY

SQUEEGEE PARTS LIST CONTINUED

#	DESCRIPTION	QTY.	ULINE PART NO.	MFG. PART NO.
7	Flange*	1	H-8686	T80251
8	Small Knob*	2	H-8685	T80250
9	Floor Wiper Yellow RAL1021*	1	H-8686	T80251
10	Screw – M5 x 20 mm*	3	H-8697	T80277
12	Bushing*	3	H-8697	T80277
13	Wheel*	3	H-8697	T80277
14	Washer D.5 x 14 INX*	6	H-8697	T80277
15	Nut M5 INOX*	3	H-8697	T80277
16	Blade Squeegee Latex Front CT15	1	H-8041-FSQG	MPVR05917
17	Bracket*	1	H-8686	T80251
18	Screw – M5 x 25 mm*	2	H-8685	T80250
19	Screw – M5 x 35 mm*	2	H-8685	T80250
20	Screw – M5 x 35 mm*	2	H-8685	T80250
21	Screw TE 6 x 20 UNI5739 INX*	2	H-8687	T80252
22	Washer D.6 UNI 6592 INOX*	2	H-8687	T80252
23	Washer D.6 UNI 6592 INOX*	2	H-8687	T80252
24	Nut M6 INOX*	2	H-8687	T80252
25	Arm*	2	H-8687	T80252
26	Nut M6 INOX*	1	H-8687	T80252
27	Spring*	2	H-8687	T80252
28	Brush Driver Kit Includes: • Screw TE 8 x 20 UNI5739 INX (1) • Washer D. 8 INX GRW UNI 1751 (1) • Washer D. 8 x 24 INX UNI 6593 (1) • Drive Disk (1) • Key 6 x 6 x 30 UNI 6604 (1)	1	H-8041-DD	T80254
33	Screw TE 6 x 20 UNI5739 INX*	4	H-8041-SQSPQ	T80253
34	Washer D. 6 INX GRW UNI 1751*	4	H-8041-SQSPQ	T80253
35	Washer D. 6 x 18 INX UNI 6593*	4	H-8041-SQSPQ	T80253
36	Bracket*	1	H-8041-SQSPQ	T80253
37	Body Side SX*	1	H-8041-SQSPQ	T80253
38	Washer D. 6 x 18 INX UNI 6593*	2	H-8687	T80252
39	Screw – M6 x 140 mm*	1	H-8687	T80252
40	Screw TE 6 x 12 A2 UNI 5739	4	H-8041-BMTR	T80255
41	Washer D. 6 INX GRW UNI 1751	4	H-8041-BMTR	T80255
42	Plate*	1	H-8688	T80256
43	Nut M8 INX*	2	H-8688	T80256
44	Washer D. 8 INX UNI 6592*	2	H-8688	T80256
45	Bushing*	2	H-8688	T80256
47	Screw TE M 8X 30 INX 5739*	2	H-8688	T80256
48	Motor Brush 24V CT15B	1	H-8041-BMTR	T80255

*Part of a kit.

COMPACT AUTO FLOOR SCRUBBER WITH LITHIUM-ION BATTERY

SQUEEGEE PARTS LIST CONTINUED

#	DESCRIPTION	QTY.	ULINE PART NO.	MFG. PART NO.
49	Cover Brush Head 24V CT15	1	H-8041-CBRHD	MPVR05827
50	Brush Nylon CT 15 D. 350	1	H-8041-BRUSH	SPPV02656
51	Screw TE M5 x 12 INOX*	3	H-8688	T80256
52	Washer D. 5 x 14 INX*	3	H-8688	T80256
53	Support*	1	H-8687	T80252
54	Washer D. 5 INX GRW UNI 1751*	3	H-8697	T80277
55	Screw TE M 6 x 50 INOX A2*	2	H-8685	T80250
56	Wheel*	2	H-8697	T80277
57	Washer D. 5 x 14 INX*	2	H-8697	T80277
58	Screw TCB TC 5 x 12 UNI 9707 TZ*	2	H-8697	T80277
59	Screw TE M5 x 12 INOX	2	-----	VTVT01300
60	Washer D. 5 x 14 INX	2	H-8041-W5X14	VTRS13750
61	Bracket	1	-----	MPVR06259
62	Cover	1	-----	MPVR06257
63	Conveyor	1	H-8041-CNVYQ	MPVR06045
64	Wiring*	1	H-12438	T80566
65	Fuse 25A*	1	H-12437	T80565
66	Motor Top	1	-----	MEVR01752
	Full Squeegee Assembly Package (Not Shown)	1	H-8041-SQGAS	PMVR01885
	Squeegee Hardware Kit (Not Shown) Includes: • Nut M5 #1 (6) • Screw TCB TC 5 x 12 UNI 9707 TZ #5 (2) • Washer D. 5 x 14 INX #6 (6) • Small Knob #8 (2) • Screw M5 x 25 #18 (2) • Screw M5 x 35 #19 (2) • Screw M5 x 35 #20 (2) • Screw TE M 6 x 50 INOX A2 #55 (2)	1	H-8685	T80250
	Squeegee Body Kit (Not Shown) Includes: • Bracket #2 (1) • Connector Elbow Fitting CT15-CT30 #4 (1) • Flange #7 (1) • Floor Wiper Yellow RAL1021 #9 (1) • Bracket #17 (1) • Screw (2)	1	H-8686	T80251
	Squeegee Arm Kit (Not Shown) Includes: • Screw TE 6 x 20 UNI5739 INX #21 (2) • Washer D.6 UNI 6592 INOX #22 (2) • Washer D.6 UNI 6592 INOX #23 (2) • Nut M6 INOX #24 (2) • Arm #25 (2) • Nut M6 INOX #26 (1) • Spring #27 (2) • Washer D. 6 x 18 INX UNI 6593 #38 (2) • Screw M6 x 140 #39 (1) • Support #53 (1)	1	H-8687	T80252

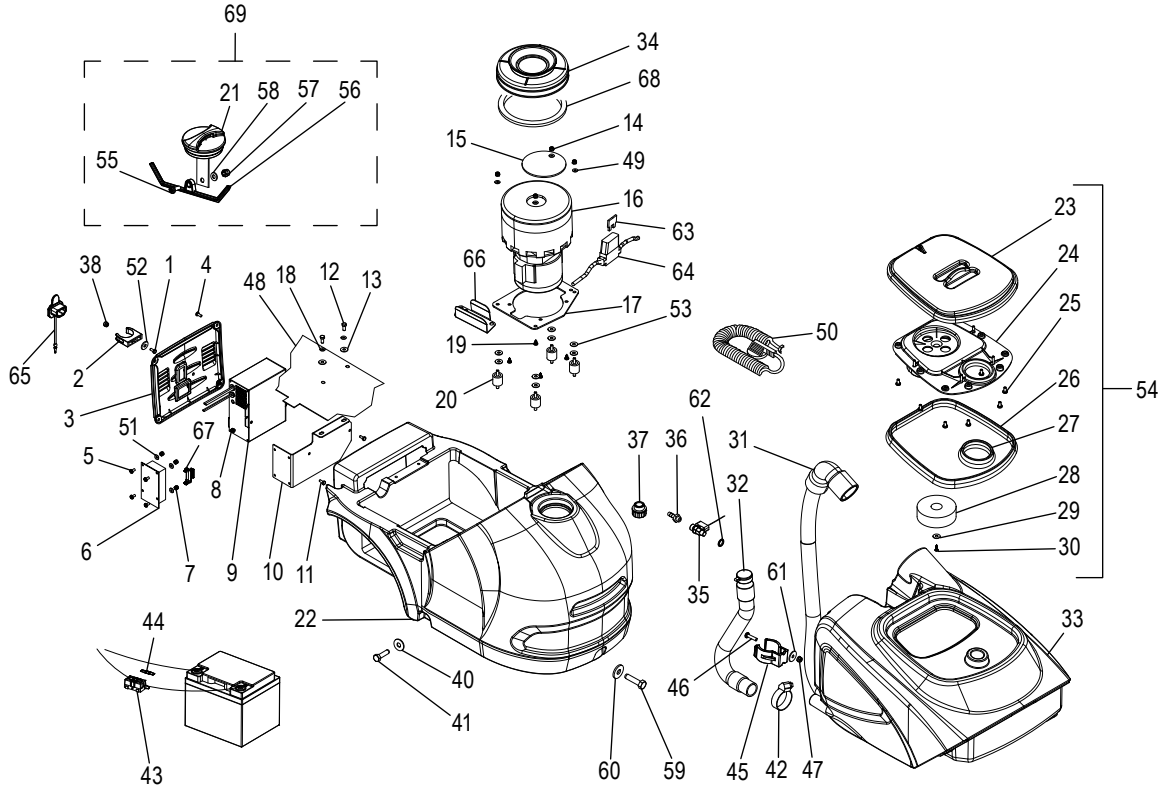
*Part of a kit.

**COMPACT AUTO
FLOOR SCRUBBER WITH
LITHIUM-ION BATTERY**
SQUEEGEE PARTS LIST CONTINUED

#	DESCRIPTION	QTY.	ULINE PART NO.	MFG. PART NO.
	Brush Motor Plate Kit (Not Shown) Includes: • Plate #42 (1) • Nut M8 INX #43 (2) • Washer D. 8 INX UNI 6592 #44 (2) • Bushing #45 (2) • Screw TE M 8 X 30 INX 5739 #47 (2) • Screw TE M5 x 12 INOX #51 (3) • Washer D. 5 x 14 INX #52 (3)	1	H-8688	T80256
	Fuse Wiring Kit (Not Shown) Includes: • Wiring Fuse Holder #43 – Tank Parts List (1) • Wiring #64 (1)	1	H-12438	T80566
	Fuse Kit (Not Shown) Includes: • Fuse 30A #44 – Tank Parts List (1) • Fuse 20A #63 – Tank Parts List (1) • Fuse 25A #65 (1)	1	H-12437	T80565
	Squeegee Wheel Kit (Not Shown) Includes: • Screw – M5 x 20 mm #10 (3) • Bushing #12 (3) • Wheel #13 (3) • Washer D.5 x 14 INX #14 (6) • Nut M5 INOX #15 (3) • Washer D. 5 INX GRW UNI 1751 #54 (3) • Wheel #56 (2) • Washer D. 5 x 14 INX #57 (2) • Screw TCB TC 5 x 12 UNI 9707 TZ #58 (2)	1	H-8697	T80277
	Brush Driver Kit (Not Shown) Includes: • Screw TE 8 x 20 UNI5739 INX#28 (1) • Washer D. 8 INX GRW UNI 1751 #29 (1) • Washer D. 8 x 24 INX UNI 6593 #30 (1) • Drive Disk #31 (1) • Key 6 X 6 x 30 UNI 6604 #32 (1)	1	H-8041-DD	T80254
	Squeegee Support Kit (Not Shown) Includes: • Screw TE 6 x 20 UNI5739 INX #33 (4) • Washer D. 6 INX GRW UNI 1751 #34 (4) • Washer D. 6 x 18 INX UNI 6593 #35 (4) • Bracket #36 (1) • Body Side SX #37 (1)	1	H-8041-SQSPQ	T80253
	Brush Motor Kit (Not Shown) Includes: • Screw TE 6 x 12 A2 UNI 5739 #40 (4) • Washer D. 6 INX GRW UNI 1751 #41 (4) • Motor Brush 24V CT15B #48 (1)	1	H-8041-BMTR	T80255

**COMPACT AUTO
FLOOR SCRUBBER WITH
LITHIUM-ION BATTERY**

TANK



TANK PARTS LIST

#	DESCRIPTION	QTY.	ULINE PART NO.	MFG. PART NO.
1	Screw TCTC 4 x 16 Steel INOX*	1	H-8689	T80257
2	Clip*	1	H-8689	T80257
3	Cover Battery Charger CT15*	1	H-8690	T80258
4	Screw TBCE ISO 7380 5 x 12 ZB*	4	H-8690	T80258
5	Screw TE M 4 x 10 ZC. UNI 5739	4	-----	T80559
6	Electronic Board Kit	1	H-8041-KCPPB	KTRIO4748
7	Nut M 4 ZIN UNI 5588	4	-----	T80259
8	Nut M 4 TEF UNI 7473	2	-----	T80259
9	Battery Charger CBHD1 24V 5A	1	H-12435	BACA00296
10	Plate	1	-----	LAFN08893
11	Screw TE M 4 x 10 ZC. UNI 5739	2	-----	T80559
12	Screw TE M 5 x 10 UNI 5739	2	-----	T80559
13	Washer D. 5 x 14 INX	2	-----	T80559
14	Nut M5 INOX*	4	H-9424-VMHK	T80260
15	Net Firma Filter INOX	1	H-9424-MOTOR	T80261
16	Motor Vacuum CT15-30-45-46	1	H-9424-MOTOR	T80261

*Part of a kit.

**COMPACT AUTO
FLOOR SCRUBBER WITH
LITHIUM-ION BATTERY**

TANK PARTS LIST CONTINUED

#	DESCRIPTION	QTY.	ULINE PART NO.	MFG. PART NO.
16	Vacuum Motor Carbon Brush	2	H-8041-CRBBR	MEVR05200
17	Plate*	1	H-9424-VMHK	T80260
18	Washer D. 5 GRW	2	-----	T80559
19	Screw TCB TC 5 x 12 UNI 9707 TZ*	4	H-9424-VMHK	T80260
20	Vibration Damp.*	4	H-9424-VMHK	T80260
21	Cap Solution Tank*	1	H-8041-CAP	KTRIO2097
22	Solution Tank	1	H-8041-ST	MPVR05960
23	Cover*	1	H-8699	KTRIO1989
24	Cover*	1	H-8699	KTRIO1989
25	Screw TCB TC 5 x 10 UNI 9707 TZ*	8	H-8699	KTRIO1989
26	Gasket Recovery Tank Lid CT15*	1	H-8699	KTRIO1989
27	Gasket*	1	H-8699	KTRIO1989
28	Floater*	1	H-8699	KTRIO1989
29	Washer 30 x 6 x 3*	1	H-8699	KTRIO1989
30	Screw TCB TC 5 x 12 UNI 9707 TZ*	1	H-8699	KTRIO1989
31	Squeegee Suction Hose	1	H-8041-STUBE	KTRIO4697
32	Recovery Tank Drain Hose*	1	H-8691	T80264
33	Tank	1	H-8041-RTBLU	MPVR05961
34	Gasket*	1	H-8041-VMTR	T80261
35	Valve A SFERA MF 1/8"	1	-----	T80262
36	Connector Portagomma 1/8" D.7	1	-----	T80262
37	Cap 1/2"	1	H-8700	MPVR10774
38	Nut M 4 INX*	1	H-8689	T80257
40	Washer D. 5 x 14 INX	3	-----	T80263
41	Screw TE M 5 x 35 UNI 5739	3	-----	T80263
42	Clamp Ekoflex 9 23-35*	1	H-8691	T80264
43	Wiring Fuse Holder CT15 Battery*	1	H-12438	T80566
44	Fuse 30A*	1	H-12437	T80565
45	Support*	1	H-8698	T80278
46	Screw*	2	H-8698	T80278
47	Nut M 4 TEF UNI 7473*	2	H-8698	T80278
48	Protection	1	-----	MPVR05907
49	Washer D. 5 INX GRW UNI 1751*	4	H-9424-VMHK	T80260
50	Extension AWG18 US Plug	1	H-8041-CHRCG	MECB00923
51	Washer M4	4	-----	T80559
52	Washer 4-16 INOX A2*	1	H-8689	T80257
53	Washer D. 5 x 14 INX*	8	H-9424-VMHK	T80260
54	CT15 Dirty Water Top Lid	1	H-8699	KTRIO1989
55	Screw TCB-TC 4 x 12 UNI7687 INX*	1	H-8041-CAP	KTRIO2097

*Part of a kit.

**COMPACT AUTO
FLOOR SCRUBBER WITH
LITHIUM-ION BATTERY****TANK PARTS LIST CONTINUED**

#	DESCRIPTION	QTY.	ULINE PART NO.	MFG. PART NO.
56	Plate CT15-30*	1	H-8041-CAP	KTRIO2097
57	Nut M 4 ATB A2*	1	H-8041-CAP	KTRIO2097
58	Washer D. 4 INX*	1	H-8041-CAP	KTRIO2097
59	Screw TE 5 x 35 UNI 5739	1	-----	T80263
60	Washer D. 5 x 14 INX	1	-----	T80263
61	Washer UNI 6592 4 x 16 ZB*	2	H-8698	T80278
62	O-Ring D. 6.75 x 1.78 NBR 70SH	1	-----	T80262
63	Fuse 20A*	1	H-12437	T80565
64	Wiring*	1	H-12438	T80566
65	Cap IEC*	1	H-8690	T80258
66	Bracket	1	-----	LAFN11082
67	Clip	1	-----	MPVR12325
68	Clamp	1	-----	FSVR00264
69	Cap with Vent	1	H-8041-CAP	KTRIO2097
	Battery for Auto Scrubber (Not Shown)	2	H-12434	KTRIO6545
	Squeegee Hose Clip Kit (Not Shown) Includes: • Screw TCTC 4 x 16 Steel INOX #1 (1) • Clip #2 (1) • Nut M 4 INX #38 (1) • Washer 4-16 INOX A2 #52 (1)	1	H-8689	T80257
	Battery Charger Cover Kit (Not Shown) Includes: • Cover Battery Charger CT15 #3 (1) • Screw TBCE ISO 7380 5 x 12 ZB #4 (4) • Cap IEC #65 (1)	1	H-8690	T80258
	Drain Hose Kit (Not Shown) Includes: • Tube Drain Recovery Tank CT15 #32 (1) • Clamp Ekoflex 9 23-35 #42 (1)	1	H-8691	T80264
	Fuse Wiring Kit (Not Shown) Includes: • Wiring Fuse Holder CT15 Battery #43 (1) • Wiring #64 (1)	1	H-12438	T80566
	Fuse Kit (Not Shown) Includes: • Fuse 30A #44 (1) • Fuse 20A #63 (1) • Fuse 25A #65 – Squeegee Parts List (1)	1	H-12437	T80565
	Drain Hose Clip Kit (Not Shown) Includes: • Support #45 (1) • Screw #46 (2) • Nut M 4 TEF UNI 7473 #47 (2) • Washer UNI 6592 4 x 16 ZB #61 (2)	1	H-8698	T80278

*Part of a kit.

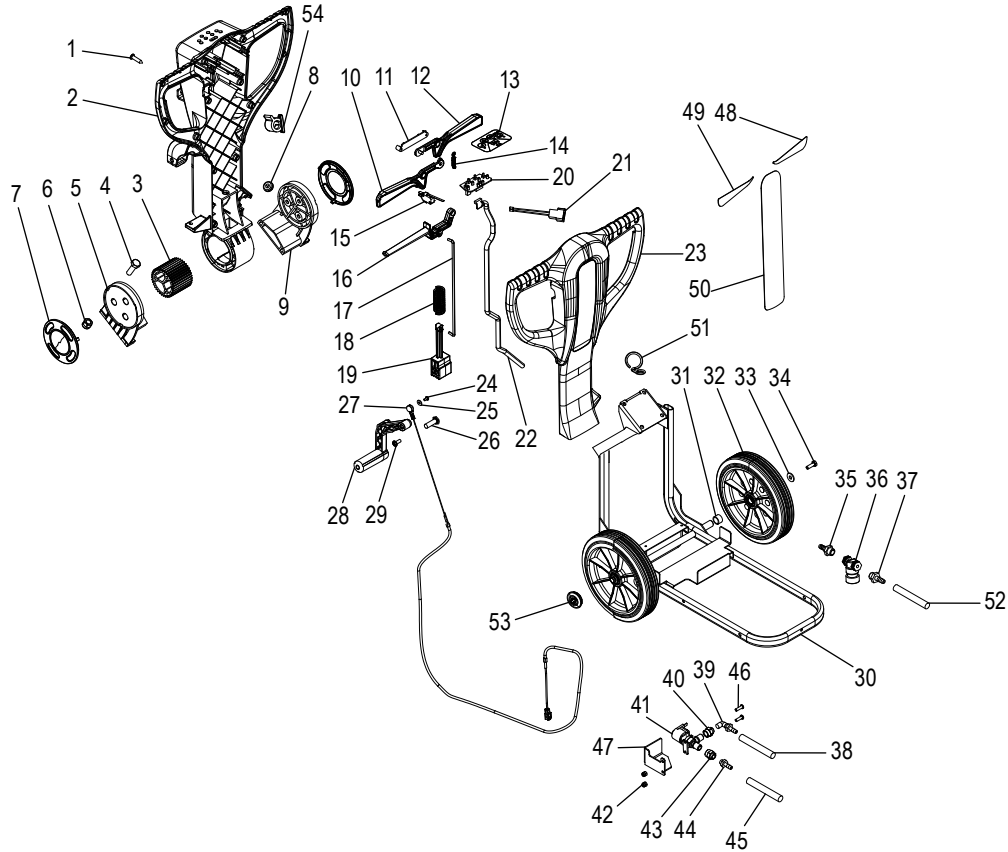
**COMPACT AUTO
FLOOR SCRUBBER WITH
LITHIUM-ION BATTERY**

TANK PARTS LIST CONTINUED

#	DESCRIPTION	QTY.	ULINE PART NO.	MFG. PART NO.
	Squeegee Hardware Kit (Not Shown) Includes: • Cover #23 (1) • Cover #24 (1) • Screw TCB TC 5 x 10 UNI 9707 TZ #25 (8) • Gasket Recovery Tank Lid CT15 #26 (1) • Gasket #27 (1) • Floater #28 (1) • Washer 30 x 6 x 3 #29 (1) • Screw TCB TC 5 x 12 UNI 9707 TZ #30 (1)	1	H-8699	KTRIO1989
	Electrical Compartment Hardware Kit Includes: • Screw TE M 4 x 10 ZC. UNI 5739 #5 (4) • Nut M 4 ZIN UNI 5588 #7 (4) • Nut M 4 TEF UNI 7473 #8 (2) • Screw TE M 4 x 10 ZC. UNI 5739 #11 (2) • Screw TE M 5 x 10 UNI 5739 #12 (2) • Washer D. 5 x 14 INX #13 (2) • Washer D. 5 GRW #18 (2) • Washer M4 #51 (4)	1	-----	T80559
	Vacuum Motor Hardware Kit Includes: • Nut M5 INOX #14 (4) • Plate #17 (1) • Screw TCB TC 5 x 12 UNI 9707 TZ #19 (4) • Vibration Damp. #20 (4) • Washer D. 5 INX GRW UNI 1751 #49 (4) • Washer D. 5 x 14 INX #53 (8)	1	H-9424-VMHK	T80260
	Vacuum Motor Kit Includes: • Net Firma Filter INOX #15 (1) • Motor Vacuum CT15-30-45-46 #16 (1) • Gasket Set #34 (1)	1	H-9424-MOTOR	T80261
	Solution Valve Kit Includes: • Valve A SFERA MF 1/8" #35 (1) • Connector Portagomma 1/8" D.7 #36 (1) • O-Ring D. 6.75 x 1.78 NBR 70SH #62 (1)	1	-----	T80262
	Hardware Kit Includes: • Washer D. 5 x 14 INX #40 (3) • Screw TE M 5 x 35 UNI 5739 #41 (3) • Screw TE 5 x 35 UNI 5739 #59 (1) • Washer D. 5 x 14 INX #60 (1)	1	-----	T80263
	Solution Tank Cap Kit Includes: • Cap Solution Tank #21 (1) • Screw TCB-TC 4 x 12 UNI7687 INX #55 (1) • Plate CT15-30 #56 (1) • Nut M 4 ATB A2 #57 (1) • Washer D. 4 INX #58 (1)	1	H-8041-CAP	KTRIO2097

**COMPACT AUTO
FLOOR SCRUBBER WITH
LITHIUM-ION BATTERY**

FRAME



FRAME PARTS LIST

#	DESCRIPTION	QTY.	ULINE PART NO.	MFG. PART NO.
1	Screw 4, 8 x 19*	14	H-9424-HNDL	T80267
2	Crankcase*	1	H-9424-HNDL	T80267
3	Gear	1	-----	MPVR06056
4	Screw TBCE ISO 7380 8 x 22 ZB*	4	H-8041-HNMT	T80268
5	Shell DX*	1	H-8041-HNMT	T80268
6	Nut M8 BASSO*	4	H-8041-HNMT	T80268
7	Cover*	2	H-8041-HNMT	T80268
8	Fair-Lead*	1	H-9424-FCABL	T80269
9	Shell SX*	1	H-8041-HNMT	T80268
10	Lever DX	1	-----	T80270
11	Support Electronic Card	1	-----	MPVR06298
12	Lever SX	1	-----	T80270
13	Label Dashboard CT15-30-45 ECO*	1	H-9424-HNDL	T80267
14	Spring	1	-----	T80270
15	Microswitch TRZ. DRW	1	H-8041-MCRSW	MECI36393
16	<i>Lever Adjustment*</i>	1	H-9424-HANDL	T80271
17	Lever Rod*	1	H-9424-HANDL	T80271
18	Spring*	1	H-9424-HANDL	T80271

**COMPACT AUTO
FLOOR SCRUBBER WITH
LITHIUM-ION BATTERY**

FRAME PARTS LIST CONTINUED

#	DESCRIPTION	QTY.	ULINE PART NO.	MFG. PART NO.
19	Handle Support*	1	H-9424-HANDL	T80271
20	Electronic Board Kit	1	H-8041-KCPPB	KTRIO4748
21	Wiring Push Button CT45 C	1	-----	MECB01324
22	Wiring *	1	H-9424-FCABL	T80269
23	Crankcase Handle Front 15-30-45*	1	H-9424-HNDL	T80267
24	Screw TC 4 x 12 ZN*	1	H-8694	T80272
25	Washer 4-16 INOX A2*	1	H-8694	T80272
26	Pin*	1	H-8694	T80272
27	Cable Lifting Squeegee CT15-30*	1	H-8694	T80272
28	Lever Squeegee Lifting PP	1	H-8041-LSLPP	MPVR49942
29	Screw TC 6 x 12*	1	H-8694	T80272
30	Frame	1	-----	LAFN08895
31	Bushing*	2	H-8695	T80273
32	Wheel D.250 CT15-30-45*	2	H-8695	T80273
33	Washer D. 8 x 24 ZC.*	2	H-8695	T80273
34	Screw TE 8 x 16 UNI 5739*	2	H-8695	T80273
35	Hose Barb Fitting	1	H-8696	T80274
36	Filter Assembly*	1	H-8696	T80274
38	Tube*	1	H-8041-CF	T80275
39	Connector Hose 1/8" D.7*	1	H-8041-CF	T80275
40	Connector - Frame*	1	H-8041-CF	T80275
41	Solenoid Valve	1	H-8041-SVALV	PMVR01883
42	Nut M4 ATB A2	2	-----	T80276
43	Connector - Frame*	1	H-8041-CF	T80275
44	Connector - Hose 1/8" D.7*	1	H-8041-CF	T80275
45	Tube - Frame*	1	H-8041-CF	T80275
46	Screw TCTC 4 x 16	2	-----	T80276
47	Protection - Solenoid Valve	1	-----	T80276
48	Label - Drive Lever	1	-----	T80270
49	Label - Drive Lever	1	-----	T80270
50	Label - Front Lever*	1	H-9424-HNDL	T80267
51	Hook	1	-----	LAFN11049
52	Tube	1	-----	TBBP00731
53	Cap	2	-----	MPVR11199
54	Cable Clip	1	-----	MPVR12369
	Squeegee Cable Kit (Not Shown) Includes: • Screw TC 4 x 12 ZN #24 (1) • Washer 4-16 INOX A2 #25 (1) • Pin #26 (1) • Cable Lifting Squeegee CT15-30 #27 (1) • Screw TC 6 x 12 #29 (1)	1	H-8694	T80272

*Part of a kit.

**COMPACT AUTO
FLOOR SCRUBBER WITH
LITHIUM-ION BATTERY**

FRAME PARTS LIST CONTINUED

#	DESCRIPTION	QTY.	ULINE PART NO.	MFG. PART NO.
	Wheel Kit (Not Shown) Includes: • Bushing #31 (2) • Wheel D.250 CT15-30-45 #32 (2) • Washer D. 8 x 24 ZC. #33 (2) • Screw TE 8 x 16 UNI 5739 #34 (2)	1	H-8695	T80273
	Water Filter Kit (Not Shown) Includes: • Connector #35 (2) • Filter Assembly #36 (1)	1	H-8696	T80274
	Handle Cover Kit Includes: • Screw 4, 8 x 19 #1 (14) • Crankcase #2 (1) • Label Dashboard CT15-30-45 ECO #13 (1) • Crankcase Handle Front 15-30-45 #23 (1) • Label – Front Lever #50 (1)	1	H-9424-HNDL	T80267
	Handle Base Cover Kit Includes: • Screw TBCE ISO 7380 8 x 22 ZB #4 (4) • Shell DX #5 (1) • Nut M8 BASSO #6 (4) • Cover #7 (2) • Shell SX #9 (1)	1	H-8041-HNMT	T80268
	Flat Cable Kit Includes: • Fair-Lead #8 (1) • Wiring #22 (1)	1	H-9424-FCABL	T80269
	Trigger Handle Kit Includes: • Lever DX #10 (1) • Lever SX #12 (1) • Spring #14 (1) • Label – Drive Lever #48 (1) • Label – Drive Lever #49 (1)	1	-----	T80270
	Handle Adjustment Kit Includes: • Lever Adjustment #16 (1) • Lever Rod #17 (1) • Spring #18 (1) • Handle Support #19 (1)	1	H-9424-HANDL	T80271
	Solution Line Kit Includes: • Tube #38 (1) • Connector Hose 1/8" D.7 #39 (1) • Connector – Frame #40 (1) • Connector – Frame #43 (1) • Connector – Hose 1/8" D.7#44 (1) • Tube – Frame #45 (1)	1	H-8041-CF	T80275
	Solenoid Guard Kit Includes: • Nut M4 ATB A2 #42 (2) • Screw TCTC 4 x 16 #46 (2) • Protection Solenoid Valve #47 (1)	1	-----	T80276