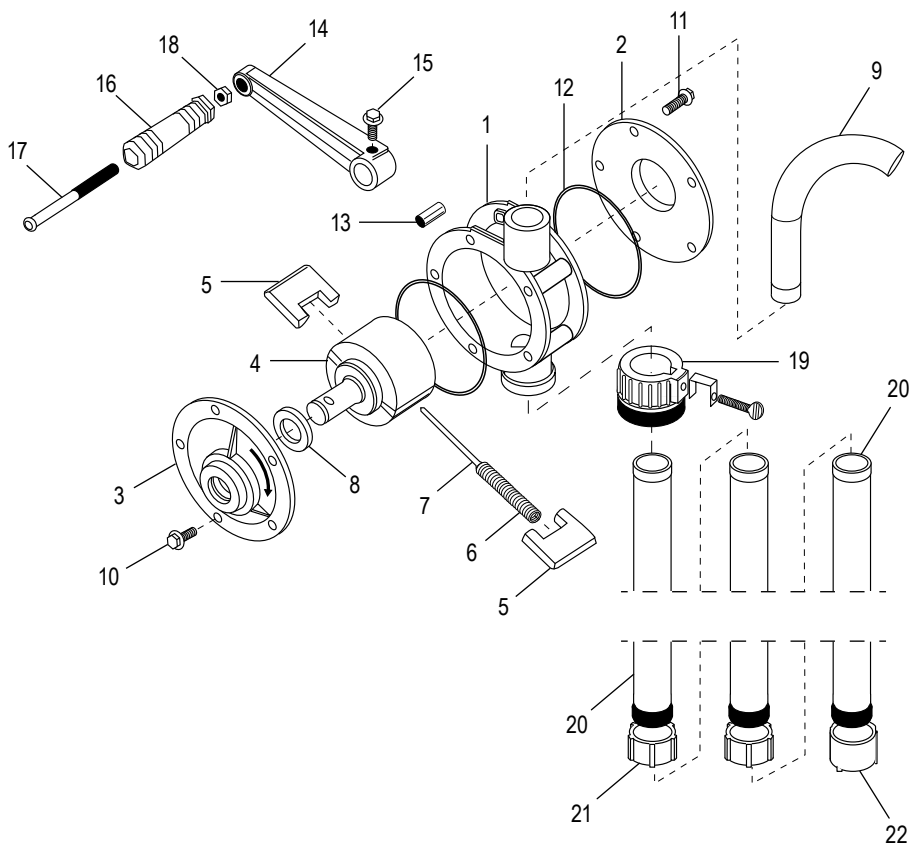
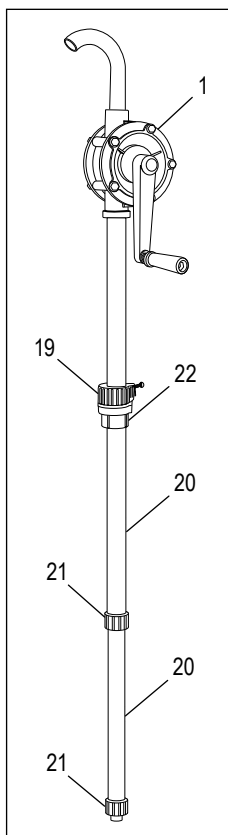
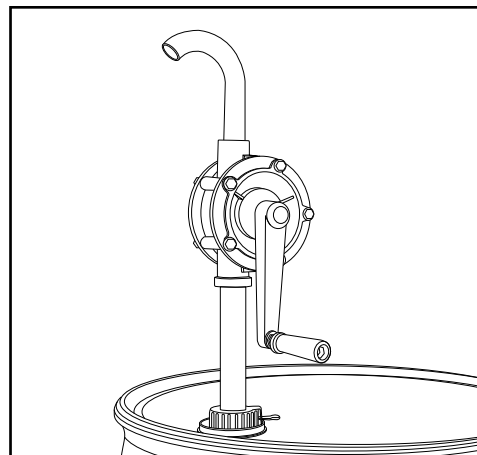


ULINE H-4377 ROTARY DRUM PUMP

1-800-295-5510
uline.com



#	DESCRIPTION	QTY.	ULINE PART NO.	MFG. PART NO.
1	Pump Body	1	-----	3003-1
2	Rear Cover	1	-----	3003-2
3	Front Cover	1	-----	3003-3
4	Rotor	1	H-4377-ROTOR	3003-4
5	Vane	2	H-4377-VNQ	3003-5
6	Spring	1	H-4377-SPNGQ	3003-6
7	Spring Rod	1	-----	3003-7
8	Lip Seal	1	H-4377-LPSL	3003-8
9	Discharge Spout	1	H-4377-9SPT	3003-9

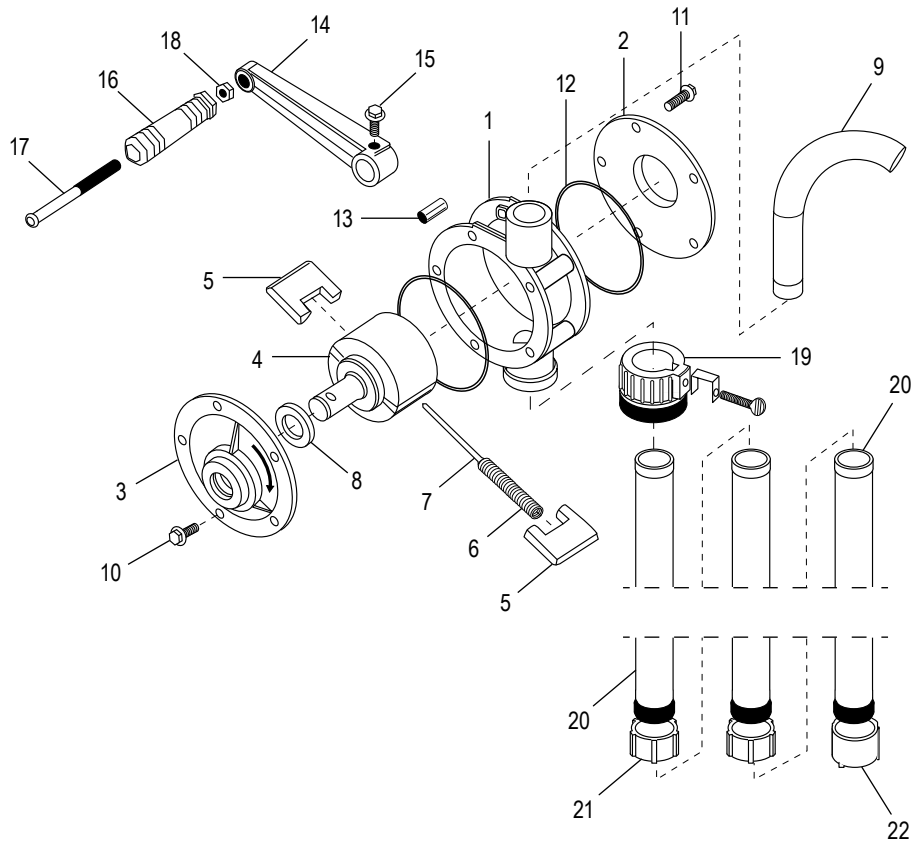
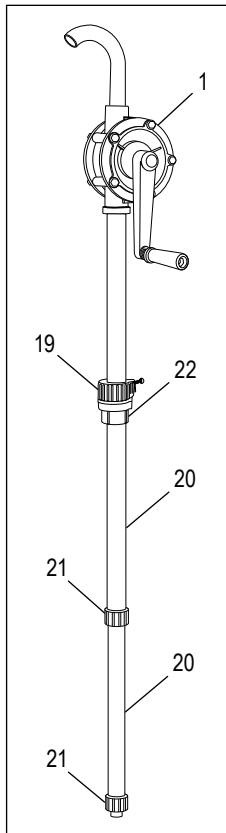
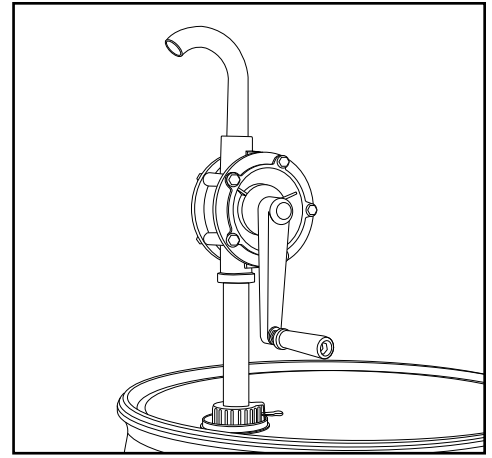
ULINE H-4377
ROTARY DRUM PUMP

1-800-295-5510
uline.com

#	DESCRIPTION	QTY.	ULINE PART NO.	MFG. PART NO.
10	Cap Screw	4	-----	3003-10
11	Long Cap Screw	6	-----	3003-11
12	O-Ring	2	H-4377-ORING	3003-24
13	Hex Bridge	2	-----	3003-13
14	Crank Arm	1	-----	3003-14
15	Set Screw	1	-----	3003-15
16	Handle	1	-----	3003-16
17	Handle Shaft	1	-----	3003-17
18	Hex Nut	1	-----	3003-18
19	Bung Adapter	1	H-4377-19Q	4377-19
20	Suction Tube	3	H-4377-TUBE	3003-TUBEKIT
21	Tube Connector	2	-----	3003-21
22	Suction Filter	1	-----	3003-22

ULINE H-4377
BOMBA GIRATORIA
PARA TAMBO

800-295-5510
 uline.mx



#	DESCRIPCIÓN	CANT.	NO. DE PARTE DE ULINE	NO. DE PARTE DEL FABRICANTE
1	Cuerpo de la Bomba	1	-----	3003-1
2	Tapa Trasera	1	-----	3003-2
3	Tapa Delantera	1	-----	3003-3
4	Rotor	1	H-4377-ROTOR	3003-4
5	Aspa	2	H-4377-VNQ	3003-5
6	Resorte	1	H-4377-SPNGQ	3003-6
7	Varilla del Resorte	1	-----	3003-7
8	Sello del Reborde	1	H-4377-LPSL	3003-8
9	Pico de Descarga	1	H-4377-9SPT	3003-9

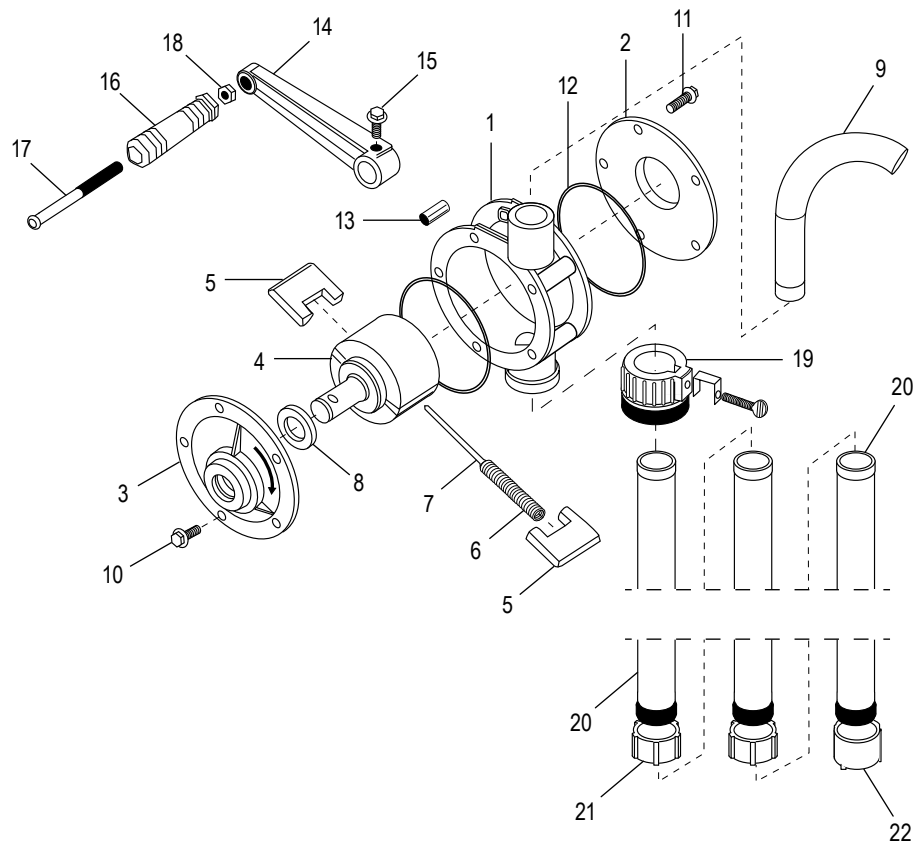
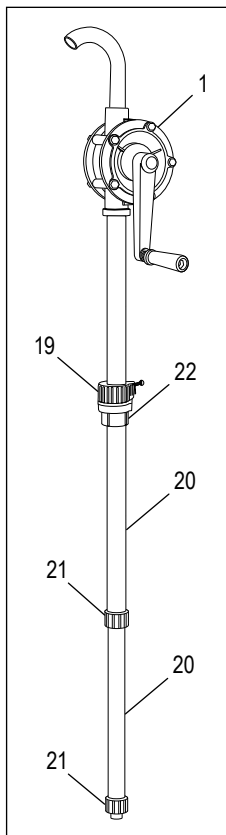
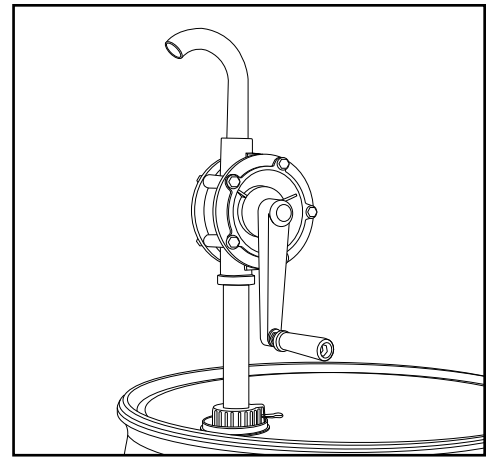
ULINE H-4377
BOMBA GIRATORIA
PARA TAMBO

800-295-5510
 uline.mx

#	DESCRIPCIÓN	CANT.	NO. DE PARTE DE ULINE	NO. DE PARTE DEL FABRICANTE
10	Tornillo de Cabeza	4	-----	3003-10
11	Tornillo de Cabeza Larga	6	-----	3003-11
12	Junta Tórica	2	H-4377-ORING	3003-24
13	Puente Hexagonal	2	-----	3003-13
14	Manivela	1	-----	3003-14
15	Tornillo de Ajuste	1	-----	3003-15
16	Asa	1	-----	3003-16
17	Eje del Asa	1	-----	3003-17
18	Tuerca Hexagonal	1	-----	3003-18
19	Adaptador de Tapón	1	H-4377-19Q	4377-19
20	Tubo de Succión	3	H-4377-TUBE	3003-TUBEKIT
21	Conector de Tubo	2	-----	3003-21
22	Filtro de Succión	1	-----	3003-22

ULINE H-4377
POMPE ROTATIVE
POUR BARIL

1 800 295-5510
 uline.ca



#	DESCRIPTION	QTÉ	RÉF. ULINE	RÉF. DU FABRICANT
1	Corps de pompe	1	-----	3003-1
2	Couvercle arrière	1	-----	3003-2
3	Couvercle avant	1	-----	3003-3
4	Rotor	1	H-4377-ROTOR	3003-4
5	Palette	2	H-4377-VNQ	3003-5
6	Ressort	1	H-4377-SPNGQ	3003-6
7	Tige à ressort	1	-----	3003-7
8	Rondelle d'étanchéité	1	H-4377-LPSL	3003-8
9	Goulotte orientable	1	H-4377-9SPT	3003-9

ULINE H-4377
POMPE ROTATIVE
POUR BARIL

1 800 295-5510
uline.ca

#	DESCRIPTION	QTÉ	RÉF. ULINE	RÉF. DU FABRICANT
10	Vis d'assemblage	4	-----	3003-10
11	Vis d'assemblage longue	6	-----	3003-11
12	Joint torique	2	H-4377-ORING	3003-24
13	Entretoise hexagonale	2	-----	3003-13
14	Bras de manivelle	1	-----	3003-14
15	Vis de pression	1	-----	3003-15
16	Poignée	1	-----	3003-16
17	Manche de la poignée	1	-----	3003-17
18	Écrou Hexagonal	1	-----	3003-18
19	Adaptateur de bonde	1	H-4377-19Q	4377-19
20	Tube d'aspiration	3	H-4377-TUBE	3003-TUBEKIT
21	Raccord de tubes	2	-----	3003-21
22	Crépine d'aspiration	1	-----	3003-22