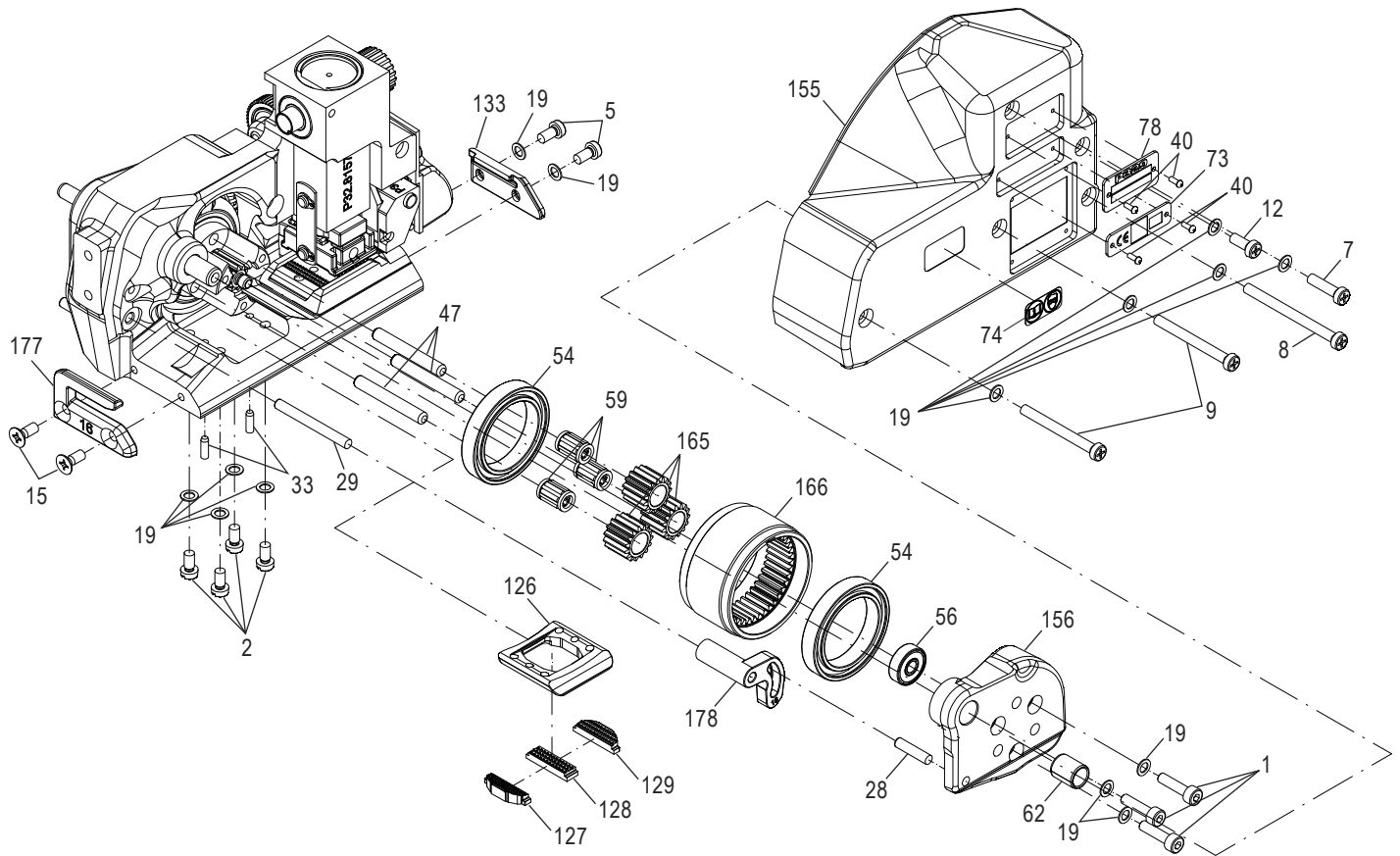
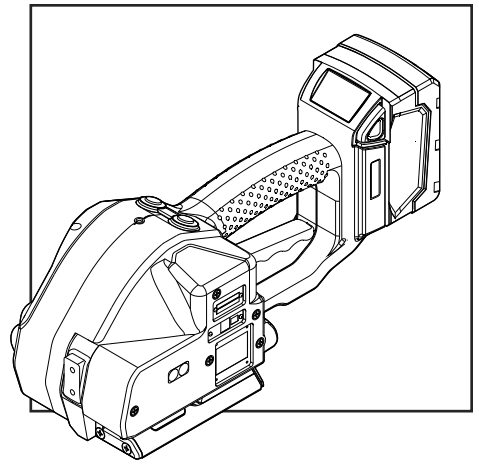


ULINE H-7184

FROMM P329 SEALLESS COMBO STRAPPING TOOL

1-800-295-5510
uline.com

Para Español, vea páginas 10-18.
Pour le français, consulter les pages 19-27.

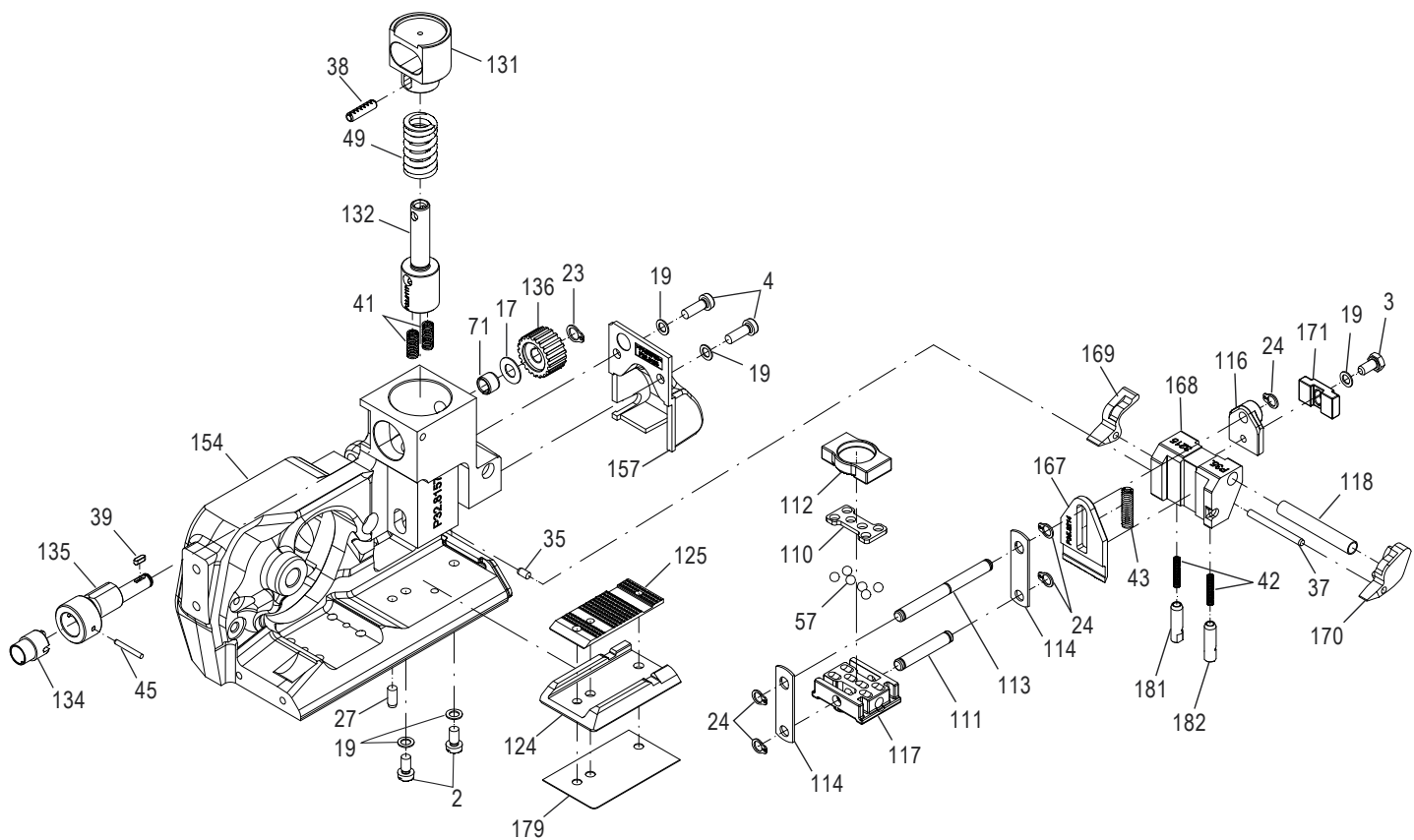


ULINE H-7184

FROMM P329 SEALLESS COMBO STRAPPING TOOL

1-800-295-5510

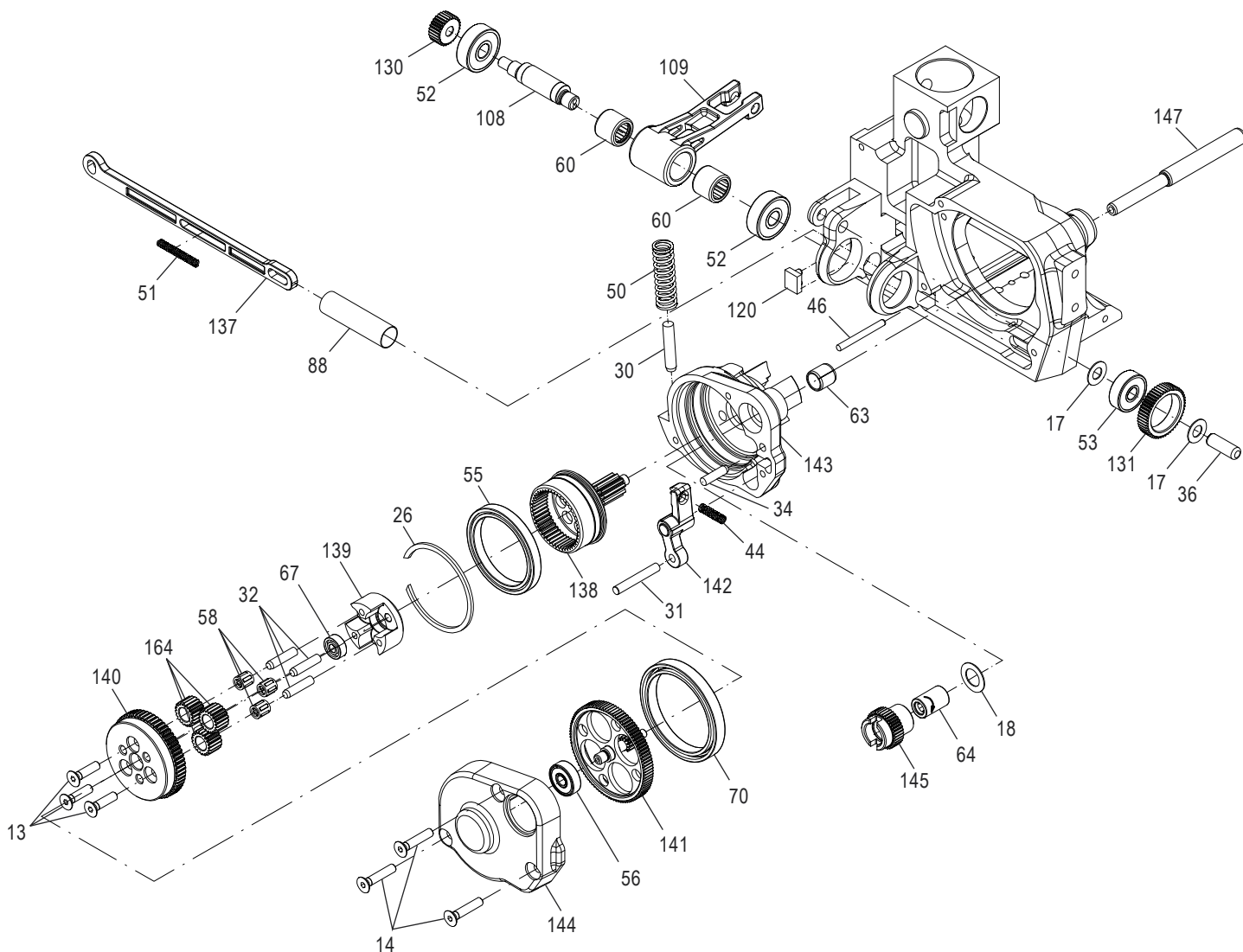
uline.com



ULINE H-7184

FROMM P329 SEALLESS COMBO STRAPPING TOOL

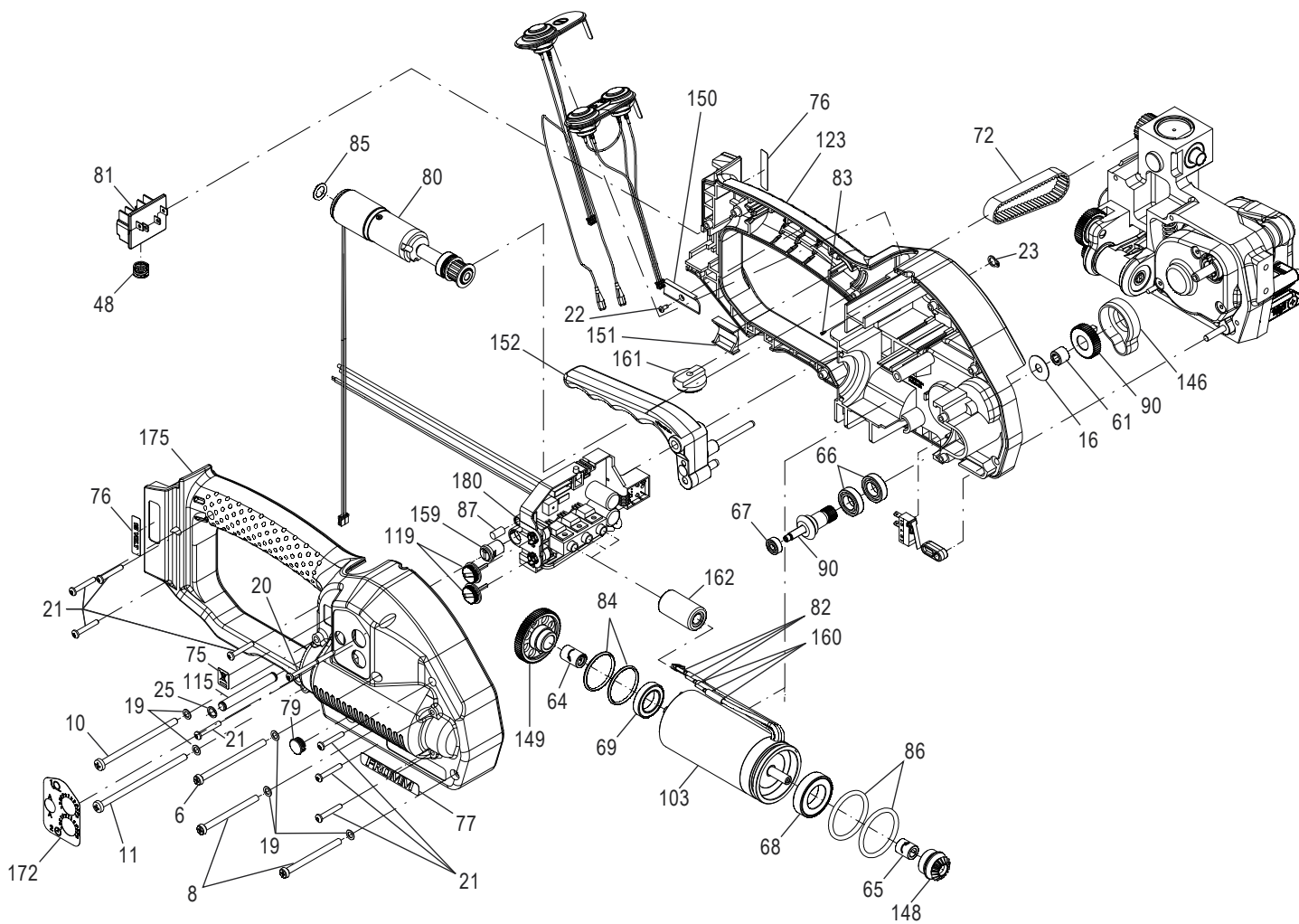
1-800-295-5510
uline.com



ULINE H-7184

FROMM P329 SEALLESS COMBO STRAPPING TOOL

1-800-295-5510
uline.com



ULINE H-7184
**FROMM P329 SEALLESS
 COMBO STRAPPING TOOL**

1-800-295-5510
 uline.com

| # | DESCRIPTION | QTY. | ULINE PART NO. | MFG. PART NO. |
|----|------------------------------|------|------------------------------|---------------|
| 1 | Screw M4 x 16 | 3 | H-6028 | N1.1196 |
| 2 | Screw M4 x 7.8 | 6 | H-6029 | N1.1305 |
| 3 | Hexagon Screw M4 x 8 | 1 | H-5908-1553 | N1.1553 |
| 4 | Flat Head Screw M4 x 12 | 2 | H-7184-4Q | N1.1910 |
| 5 | Flat Head Screw M4 x 8 | 2 | H-5909-1911 | N1.1911 |
| 6 | Flat Head Screw M4 x 60 | 1 | H-2615-137Q | N1.1927 |
| 7 | Flat Head Screw M4 x 16 | 1 | H-6030 | N1.1928 |
| 8 | Flat Head Screw M4 x 50 | 3 | H-6031 | N1.1934 |
| 9 | Flat Head Screw M4 x 40 | 2 | H-6032 | N1.1943 |
| 10 | Screw M4 x 70 | 1 | H-5909-11966 | N1.1966 |
| 11 | Screw M4 x 80 | 1 | H-5909-1972 | N1.1972 |
| 12 | Flat Head Screw M4 x 10 | 1 | H-6033 | N1.1973 |
| 13 | Countersunk Screw M4 x 16 | 3 | ----- | N1.2188 |
| 14 | Countersunk Screw M4 x 20 | 3 | ----- | N1.2189 |
| 15 | Countersunk Screw M4 x 10 | 2 | H-5908-SCREW | N1.2222 |
| 16 | Spacer Washer 6 x 18 x 0.5 | 1 | ----- | N1.6305 |
| 17 | Spacer Washer 6 x 12 x 0.5 | 3 | ----- | N1.6331 |
| 18 | Spacer Washer 9 x 15 x 0.5 | 1 | ----- | N1.6386 |
| 19 | Safety Washer M4 | 24 | H-6034 | N1.6504 |
| 20 | PT-Screw 3 x 40 | 1 | H-956-1/2SC | N1.7207 |
| 21 | PT-Screw 3 x 20 | 8 | H-6035 | N1.7211 |
| 22 | PT-Screw 2.2 x 5 | 1 | ----- | N1.7222 |
| 23 | Security Ring 6 | 2 | H-2615-RNG | N2.1118 |
| 24 | Security Ring 5 | 4 | H-2615-1121 | N2.1121 |
| 25 | Spring Ring SW6 | 1 | H-2614-160 | N2.1606 |
| 26 | Spring Ring SB44 | 1 | ----- | N2.1610 |
| 27 | Parallel Pin 4 m6 x 10 | 1 | ----- | N2.2110 |
| 28 | Parallel Pin 4 m6 x 18 | 1 | H-5908-2119 | N2.2119 |
| 29 | Parallel Pin 4 m6 x 40 | 1 | H-5909-2124 | N2.2124 |
| 30 | Parallel Pin 5 m6 x 26 | 1 | ----- | N2.2126 |
| 31 | Parallel Pin 4 m6 x 28 | 1 | ----- | N2.2142 |
| 32 | Parallel Pin 4 h6 x 18 | 3 | ----- | N2.2145 |
| 33 | Parallel Pin 3 m6 x 10 | 2 | H-5909-33 | N2.2147 |
| 34 | Parallel Pin 4 m6 x 16 | 1 | ----- | N2.2180 |
| 35 | Parallel Pin 3 m6 x 6 | 1 | H-956-PPIN | N2.2187 |
| 36 | Parallel Pin 6 h6 x 18 | 1 | ----- | N2.2190 |
| 37 | Parallel Pin 3 m6 x 32 | 1 | H-5908-37 | N2.2193 |
| 38 | Dowel Pin 4 x 15 | 1 | ----- | N2.2443 |
| 39 | Feather Key 2 x 2 x 6 | 1 | ----- | N2.3364 |
| 40 | Hammer Head Bolt 1.85 x 4.76 | 2 | ----- | N2.4902 |

**FROMM P329 SEALLESS
COMBO STRAPPING TOOL**

1-800-295-5510

uline.com

| # | DESCRIPTION | QTY. | ULINE PART NO. | MFG. PART NO. |
|----|---|------|------------------------------|---------------|
| 41 | Pressure Spring 0.6 x 4.8 x 20/15.5 | 2 | ----- | N2.5157 |
| 42 | Pressure Spring 0.32 x 2.82 x 20.5/20.5 | 2 | H-5908-42 | N2.5178 |
| 43 | Pressure Spring 0.8 x 4.8 x 20/18.5 | 1 | H-5908-43 | N2.5237 |
| 44 | Pressure Spring 0.5 x 4 x 24/16.5 | 1 | H-5909-46 | N2.5296 |
| 45 | Dowel Pin 2 x 16 | 1 | H-11455 | N21.2140 |
| 46 | Parallel Pin 3 h6 x 30 | 1 | ----- | N21.2144 |
| 47 | Parallel Pin 5 h6 x 37.6 | 3 | ----- | N21.2145 |
| 48 | Pressure Spring 0.9 x 10 x 15/5.5 | 1 | H-7184-48Q | N21.5124 |
| 49 | Pressure Spring 2.5 x 14.2 x 33.5/7.5 | 1 | ----- | N21.5138 |
| 50 | Pressure Spring 1.25 x 9.8 x 45/14.5 | 1 | H-7369 | N21.5139 |
| 51 | Pressure Spring 0.43 x 3.6 x 32.9/27.5 | 1 | H-5908-PS | N21.5219 |
| 52 | Ball Bearing 7 x 22 x 7 | 2 | H-5908-1134 | N3.1134 |
| 53 | Ball Bearing 6 x 19 x 6 | 1 | H-5908-1159 | N3.1159 |
| 54 | Ball Bearing 30 x 42 x 7 | 2 | H-956-BEAR | N3.1172 |
| 55 | Ball Bearing 35 x 44 x 5 | 1 | ----- | N3.1178 |
| 56 | Ball Bearing 5 x 16 x 5 | 2 | H-5908-56 | N3.1185 |
| 57 | Ball 4 mm | 6 | H-6036 | N3.1702 |
| 58 | Needle Cage K 4 x 7 x 7 TN | 3 | ----- | N3.2105 |
| 59 | Needle Cage K 5 x 9 x 13 TN | 3 | H-5908-2107Q | N3.2107 |
| 60 | Needle Bushing 10 x 14 x 12 | 2 | H-5909-2347 | N3.2347 |
| 61 | Needle Bushing 6 x 10 x 8 | 1 | ----- | N3.2362 |
| 62 | Slide-Bearing 8 x 10 x 12 | 1 | H-6684 | N3.3150 |
| 63 | Slide-Bearing 8 x 10 x 10 | 1 | ----- | N3.3172 |
| 64 | Needle Free Wheeling 6 x 10 x 15 | 2 | H-6037 | N3.4509 |
| 65 | Free Wheeling 6 x 10 x 12 | 1 | H-6038 | N3.4520 |
| 66 | Ball Bearing 10 x 19 x 5 | 2 | H-2614-179 | N31.1118 |
| 67 | Ball Bearing 4 x 11 x 4 | 2 | H-2614-161 | N31.1120 |
| 68 | Ball Bearing 17 x 30 x 7 | 1 | H-5908-1151 | N31.1151 |
| 69 | Ball Bearing 15 x 24 x 5 | 1 | H-5908-1163 | N31.1163 |
| 70 | Ball Bearing 40 x 50 x 6 | 1 | ----- | N31.1169 |
| 71 | Slide-Bearing 6 x 8 x 6 | 1 | ----- | N31.3115 |
| 72 | Toothed Belt 9 mm | 1 | H-5909-3236Q | N4.3236 |
| 73 | Label - "CE" | 1 | ----- | N4.9159 |
| 74 | Adhesive Label - "Warnings" | 1 | ----- | N41.9127 |
| 75 | Adhesive Label - "WEEE" | 1 | ----- | N43.9164 |
| 76 | Adhesive Label - "18 Volt" | 1 | ----- | N43.9192 |
| 77 | Adhesive Label - "FROMM" | 1 | ----- | N44.9104 |
| 78 | Type Plate - "P329" | 1 | ----- | N44.9148 |
| 79 | Cover | 1 | ----- | N5.2702 |
| 80 | Gear Motor | 1 | H-6039 | N51.1127 |
| 81 | Insertation Part | 1 | H-2614-2194 | N51.2194 |

ULINE H-7184
**FROMM P329 SEALLESS
 COMBO STRAPPING TOOL**

1-800-295-5510
 uline.com

| # | DESCRIPTION | QTY. | ULINE PART NO. | MFG. PART NO. |
|-----|--------------------|------|-----------------------------|---------------|
| 82 | Contact Plug | 3 | ----- | N51.2199 |
| 83 | Spring Pin | 1 | ----- | N51.5477 |
| 84 | O-Ring 24 x 2 | 2 | H-5908-6224 | N6.6224 |
| 85 | O-Ring 8 x 2 | 1 | H-5908-6232 | N6.6232 |
| 86 | O-Ring 29.5 x 3 | 2 | H-5908-6220 | N61.6220 |
| 87 | Holding Down Clamp | 1 | ----- | P30.1210 |
| 88 | Tube | 1 | ----- | P31.1124 |
| 89 | Rocker | 1 | ----- | P32.0144 |
| 90 | Pinion | 1 | H-2615-161 | P32.0159 |
| 92 | Welding Excentric | 1 | ----- | P32.0202 |
| 93 | Spring Bolt | 1 | ----- | P32.0203 |
| 94 | Gear Wheel | 1 | ----- | P32.0204 |
| 95 | Idler Step | 1 | ----- | P32.0205 |
| 96 | Lever | 1 | ----- | P32.0206 |
| 97 | Gear Body | 1 | ----- | P32.0207 |
| 98 | Gear | 1 | ----- | P32.0208 |
| 99 | Gear Wheel | 1 | ----- | P32.0209 |
| 100 | Gear Wheel | 1 | ----- | P32.0210 |
| 101 | Conical Gear Wheel | 1 | ----- | P32.0211 |
| 102 | Gear Wheel | 1 | ----- | P32.0212 |
| 103 | Motor | 1 | H-6040 | P32.0213 |
| 104 | Gear Wheel | 1 | ----- | P32.0214 |
| 105 | Body | 1 | ----- | P32.0218 |
| 106 | Cover | 1 | ----- | P32.0221 |
| 107 | End Cover | 1 | H-5909-107Q | P32.0222 |
| 108 | Welding Excentric | 1 | H-5908-1022 | P32.1022 |
| 109 | Rocker | 1 | H-6044 | P32.1024 |
| 110 | Ball Cage | 1 | ----- | P32.1027 |
| 111 | Bolt | 1 | H-6045 | P32.1028 |
| 112 | Thrust Piece | 1 | ----- | P32.1029 |
| 113 | Driving Pin | 1 | H-5909-113 | P32.1032 |
| 114 | Driver | 2 | H-6046 | P32.1035 |
| 115 | Handle Shaft | 1 | H-7292 | P32.1215 |
| 116 | Pusher | 1 | H-5908-1251 | P32.1251 |
| 117 | Welding Gripper | 1 | H-1728-1511 | P32.1511 |
| 118 | Centering Sleeve | 1 | H-5908-116 | P32.1710 |
| 119 | Turning Button | 2 | H-2614-TB | P32.2009 |
| 120 | Guide | 1 | ----- | P32.2012 |
| 121 | Gear Wheel | 1 | H-2615-GEAR | P32.2016 |
| 122 | Body | 1 | H-5908-8101 | P32.8101 |
| 123 | Motor Housing | 1 | H-6041 | P32.8103 |

ULINE H-7184
**FROMM P329 SEALLESS
 COMBO STRAPPING TOOL**

1-800-295-5510
 uline.com

| # | DESCRIPTION | QTY. | ULINE PART NO. | MFG. PART NO. |
|-----|----------------------|------|-----------------------------|---------------|
| 124 | Steel Insert | 1 | H-5908-8106 | P32.8106 |
| 125 | Welding Stop Gripper | 1 | H-6047 | P32.8107 |
| 126 | Holder | 1 | H-5908-124 | P32.8108 |
| 127 | Top Gripper | 1 | H-6048 | P32.8109 |
| 128 | Middle Gripper | 1 | H-6049 | P32.8110 |
| 129 | Bottom Gripper | 1 | H-6050 | P32.8111 |
| 130 | Pinion | 1 | H-5908-8115 | P32.8115 |
| 131 | Spring Slide | 1 | ----- | P32.8116 |
| 132 | Spring Bolt | 1 | ----- | P32.8117 |
| 133 | Strap Guide Plate | 1 | H-5908-8118 | P32.8118 |
| 134 | Magnet | 1 | H-11456 | P32.8120 |
| 135 | Excentric Shaft | 1 | H-11457 | P32.8121 |
| 136 | Toothed Belt Pulley | 1 | ----- | P32.8122 |
| 137 | Pusher | 1 | ----- | P32.8125 |
| 138 | Gear Wheel | 1 | ----- | P32.8126 |
| 139 | Planet Shaft | 1 | ----- | P32.8127 |
| 140 | Gear Wheel | 1 | ----- | P32.8128 |
| 141 | Gear Wheel | 1 | ----- | P32.8129 |
| 142 | Lever | 1 | H-5909-142 | P32.8130 |
| 143 | Gear Body | 1 | ----- | P32.8131 |
| 144 | Gearing Cover | 1 | ----- | P32.8132 |
| 145 | Gear Wheel | 1 | ----- | P32.8134 |
| 146 | Housing | 1 | ----- | P32.8136 |
| 147 | Swivel Shaft | 1 | ----- | P32.8137 |
| 148 | Conical Gear Shaft | 1 | H-5908-8139 | P32.8138 |
| 149 | Gear Wheel | 1 | H-5908-8139 | P32.8139 |
| 150 | Retainer | 1 | ----- | P32.8140 |
| 151 | Covering | 1 | ----- | P32.8141 |
| 152 | Handle Lever | 1 | H-6685 | P32.8142 |
| 153 | Gear Wheel | 1 | ----- | P32.8153 |
| 154 | Body | 1 | H-5909-8157 | P32.8157 |
| 155 | Cover | 1 | H-5908-8158 | P32.8158 |
| 156 | End Cover | 1 | H-6051 | P32.8159 |
| 157 | Cover | 1 | H-5908-8195 | P32.8195 |
| 158 | Gear Wheel | 1 | ----- | P33.0204 |
| 159 | Turning Button | 1 | ----- | P33.2115 |
| 160 | Shrinkable Hose | 3 | ----- | P33.2127 |
| 161 | Disk | 1 | H-5908-DISK | P33.2145 |
| 162 | Dowel | 1 | ----- | P33.2155 |
| 163 | Pusher | 1 | ----- | P35.0146 |
| 164 | Idler Gear | 3 | ----- | P35.3104 |

ULINE H-7184
**FROMM P329 SEALLESS
 COMBO STRAPPING TOOL**

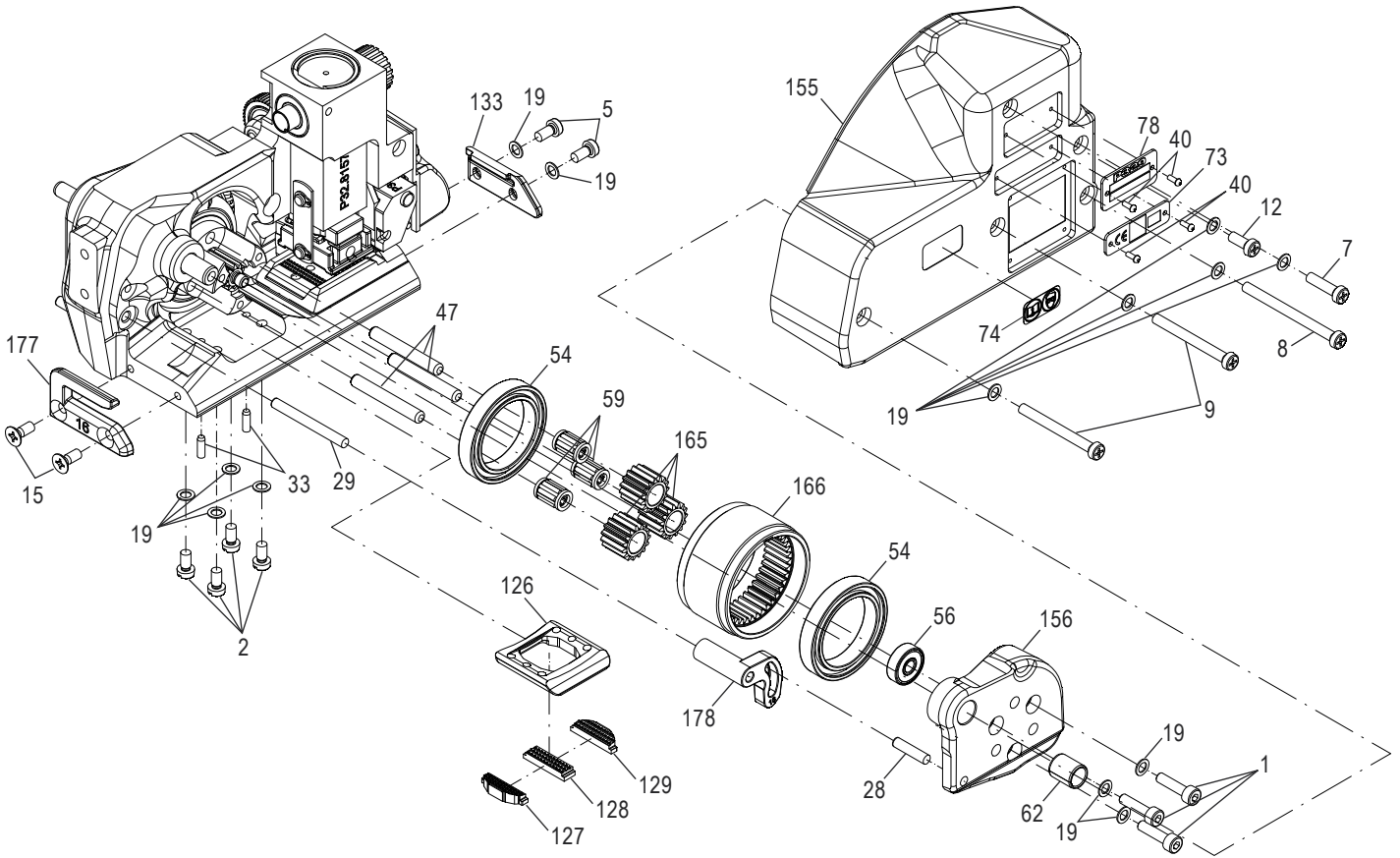
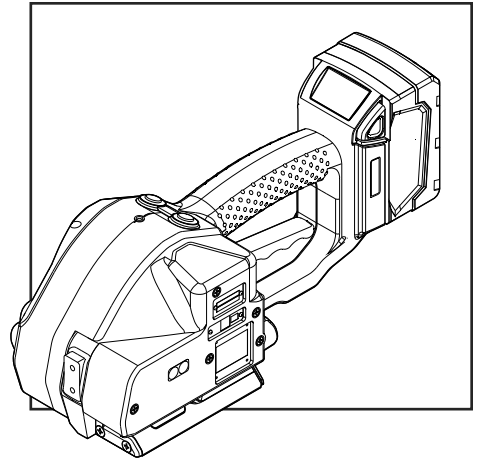
1-800-295-5510
 uline.com

| # | DESCRIPTION | QTY. | ULINE PART NO. | MFG. PART NO. |
|-----|---------------------------------|------|------------------------------|---------------|
| 165 | Idler Gear | 3 | H-5908-3201 | P35.3201 |
| 166 | Tensioning Wheel | 1 | H-5909-3203 | P35.3203 |
| 167 | Cutter | 1 | H-5909-3214 | P35.3214 |
| 168 | Guide Case | 1 | H-5909-3215 | P35.3215 |
| 169 | Seesaw Lever | 1 | H-1728-SLVR | P35.3220 |
| 170 | Seesaw Lever | 1 | H-2615-3221 | P35.3221 |
| 171 | Thrust Piece | 1 | H-5908-3223 | P35.3223 |
| 172 | Adhesive Label - "Button Panel" | 1 | ----- | N44.9160 |
| 173 | Base Model | 1 | ----- | P32.0219 |
| 174 | Circuit Board | 1 | H-5909-0229 | P32.0229 |
| 175 | Motor Housing | 1 | H-6042 | P32.8105 |
| 176 | Touch Contact Switch | 1 | H-6043 | P32.8150 |
| 177 | Strap Stop | 1 | H-7184-8169 | P32.8169 |
| 178 | Strap Guide | 1 | H-7184-SG | P32.8178 |
| 179 | Insertation Part | 1 | H-5908-8198 | P32.8198 |
| 180 | Circuit Board | 1 | ----- | P32.8199 |
| 181 | Guide Pin | 1 | H-7184-GP181 | P35.3218 |
| 182 | Guide Pin | 1 | H-7184-GP182 | P35.3219 |

ULINE H-7184

**FROMM P329
HERRAMIENTA COMBINADA
PARA UNIÓN SIN SELLO**

800-295-5510
uline.mx



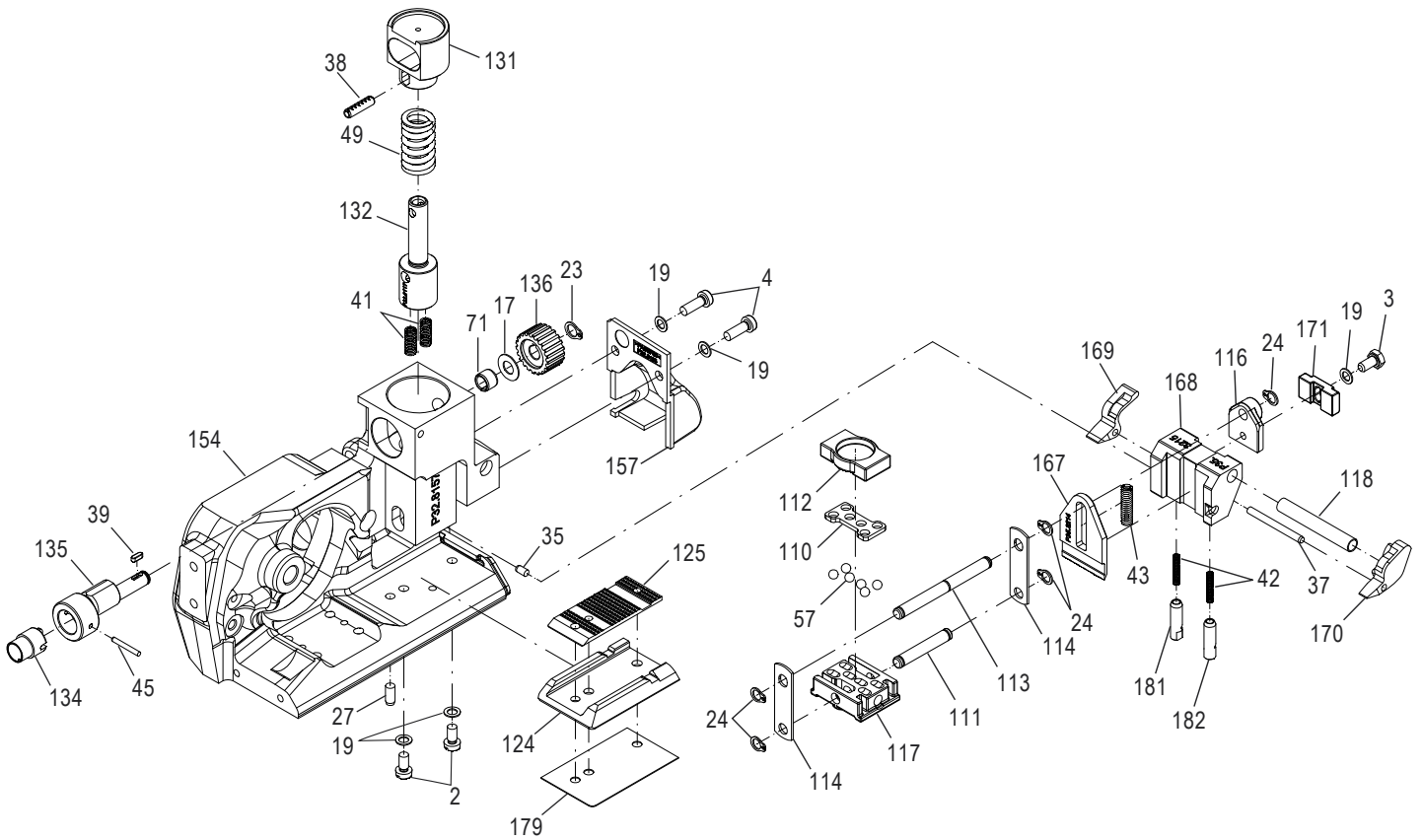
ULINE H-7184

FROMM P329

**HERRAMIENTA COMBINADA
PARA UNIÓN SIN SELLO**

800-295-5510

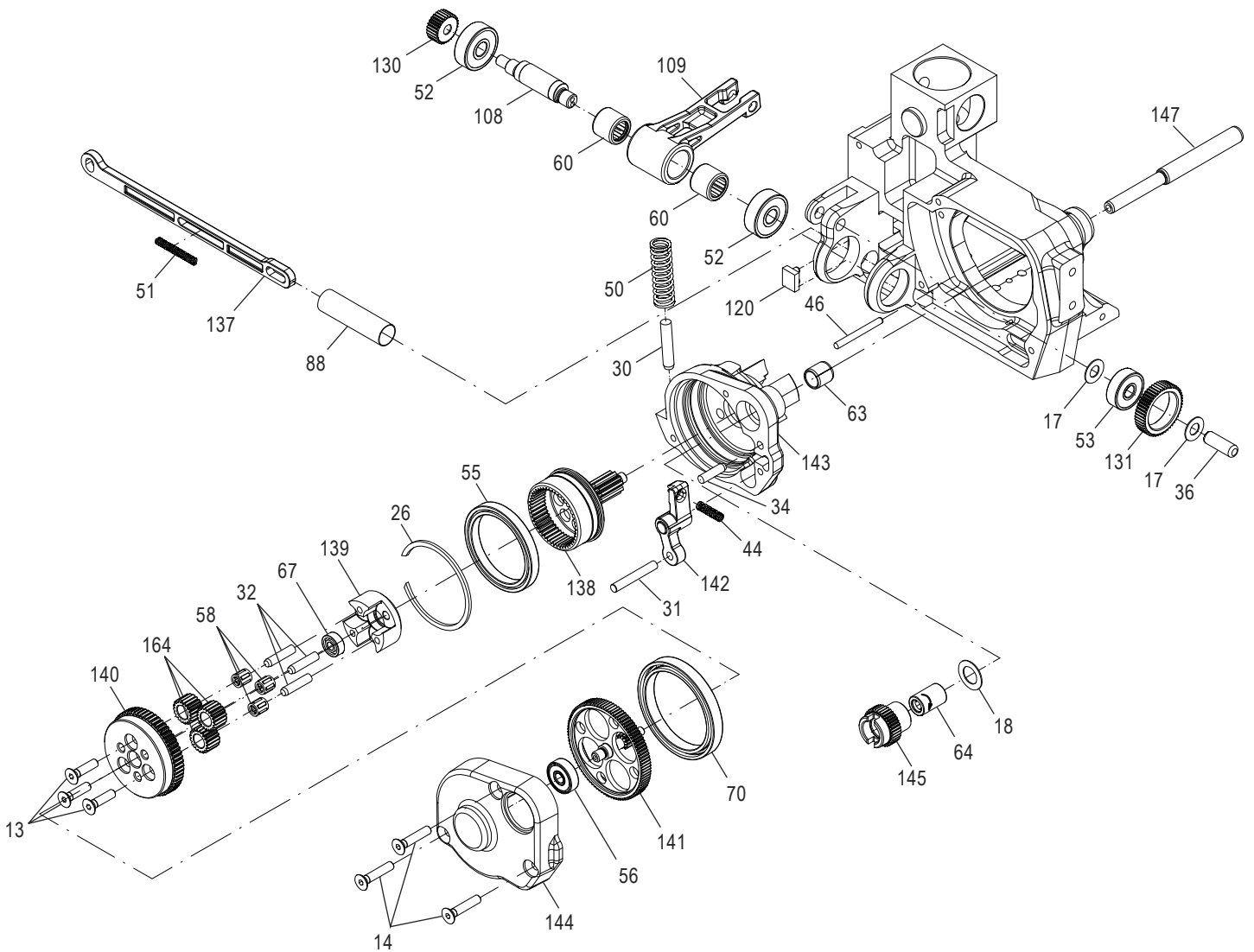
uline.mx



ULINE H-7184

**FROMM P329
HERRAMIENTA COMBINADA
PARA UNIÓN SIN SELLO**

800-295-5510
uline.mx

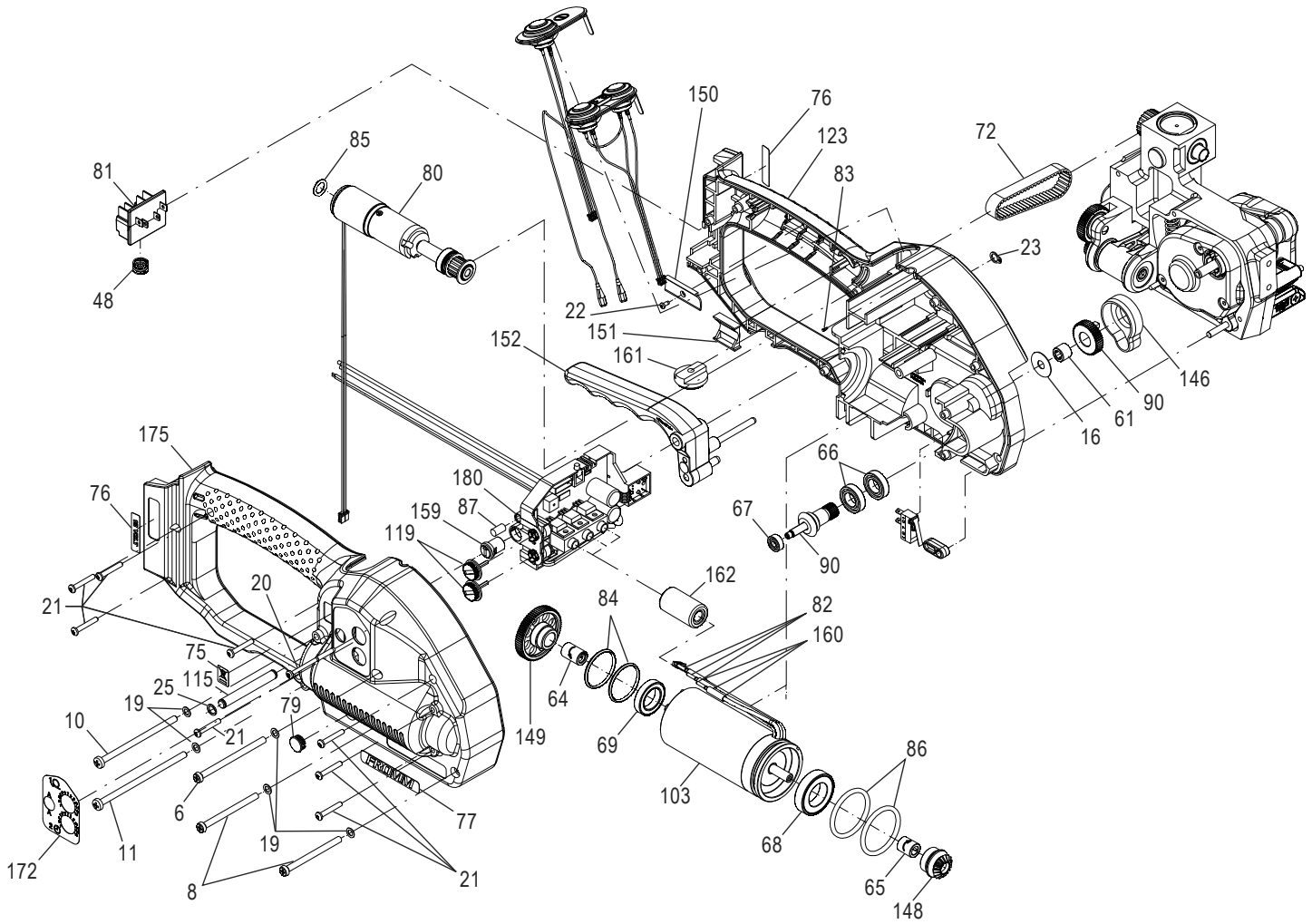


ULINE H-7184

800-295-5510

uline.mx

**FROMM P329
HERRAMIENTA COMBINADA
PARA UNIÓN SIN SELLO**



ULINE H-7184**FROMM P329
HERRAMIENTA COMBINADA
PARA UNIÓN SIN SELLO**

800-295-5510

uline.mx

| # | DESCRIPCIÓN | CANT. | NO. DE PARTE DE ULINE | NO. DE PARTE DEL FABRICANTE |
|----|---|-------|------------------------------|-----------------------------|
| 1 | Tornillo M4 x 16 | 3 | H-6028 | N1.1196 |
| 2 | Tornillo M4 x 7.8 | 6 | H-6029 | N1.1305 |
| 3 | Tornillo Hexagonal M4 x 8 | 1 | H-5908-1553 | N1.1553 |
| 4 | Tornillo de Cabeza Plana M4 x 12 | 2 | H-7184-4Q | N1.1910 |
| 5 | Tornillo de Cabeza Plana M4 x 8 | 2 | H-5909-1911 | N1.1911 |
| 6 | Tornillo de Cabeza Plana M4 x 60 | 1 | H-2615-137Q | N1.1927 |
| 7 | Tornillo de Cabeza Plana M4 x 16 | 1 | H-6030 | N1.1928 |
| 8 | Tornillo de Cabeza Plana M4 x 50 | 3 | H-6031 | N1.1934 |
| 9 | Tornillo de Cabeza Plana M4 x 40 | 2 | H-6032 | N1.1943 |
| 10 | Tornillo M4 x 70 | 1 | H-5909-11966 | N1.1966 |
| 11 | Tornillo M4 x 80 | 1 | H-5909-1972 | N1.1972 |
| 12 | Tornillo de Cabeza Plana M4 x 10 | 1 | H-6033 | N1.1973 |
| 13 | Tornillo Avellanado M4 x 16 | 3 | ----- | N1.2188 |
| 14 | Tornillo Avellanado M4 x 20 | 3 | ----- | N1.2189 |
| 15 | Tornillo Avellanado M4 x 10 | 2 | H-5908-SCREW | N1.2222 |
| 16 | Rondana 6 x 18 x 0.5 | 1 | ----- | N1.6305 |
| 17 | Rondana 6 x 12 x 0.5 | 3 | ----- | N1.6331 |
| 18 | Rondana 9 x 15 x 0.5 | 1 | ----- | N1.6386 |
| 19 | Rondana de Seguridad M4 | 24 | H-6034 | N1.6504 |
| 20 | Tornillo-PT 3 x 40 | 1 | H-956-1/2SC | N1.7207 |
| 21 | Tornillo-PT 3 x 20 | 8 | H-6035 | N1.7211 |
| 22 | Tornillo-PT 2.2 x 5 | 1 | ----- | N1.7222 |
| 23 | Anillo de Seguridad 6 | 2 | H-2615-RNG | N2.1118 |
| 24 | Anillo de Seguridad 5 | 4 | H-2615-1121 | N2.1121 |
| 25 | Anillo de Seguridad SW6 | 1 | H-2614-160 | N2.1606 |
| 26 | Anillo de Seguridad SB44 | 1 | ----- | N2.1610 |
| 27 | Pin Paralelo 4 m6 x 10 | 1 | ----- | N2.2110 |
| 28 | Pin Paralelo 4 m6 x 18 | 1 | H-5908-2119 | N2.2119 |
| 29 | Pin Paralelo 4 m6 x 40 | 1 | H-5909-2124 | N2.2124 |
| 30 | Pin Paralelo 5 m6 x 26 | 1 | ----- | N2.2126 |
| 31 | Pin Paralelo 4 m6 x 28 | 1 | ----- | N2.2142 |
| 32 | Pin Paralelo 4 h6 x 18 | 3 | ----- | N2.2145 |
| 33 | Pin Paralelo 3 m6 x 10 | 2 | H-5909-33 | N2.2147 |
| 34 | Pin Paralelo 4 m6 x 16 | 1 | ----- | N2.2180 |
| 35 | Pin Paralelo 3 m6 x 6 | 1 | H-956-PPIN | N2.2187 |
| 36 | Pin Paralelo 6 h6 x 18 | 1 | ----- | N2.2190 |
| 37 | Pin Paralelo 3 m6 x 32 | 1 | H-5908-37 | N2.2193 |
| 38 | Pin de Clavija 4 x 15 | 1 | ----- | N2.2443 |
| 39 | Chavefa 2 x 2 x 6 | 1 | ----- | N2.3364 |
| 40 | Tornillo con Cabeza de Martillo 1.85 x 4.76 | 2 | ----- | N2.4902 |

ULINE H-7184**FROMM P329
HERRAMIENTA COMBINADA
PARA UNIÓN SIN SELLO**

800-295-5510

uline.mx

| # | DESCRIPCIÓN | CANT. | NO. DE PARTE DE ULINE | NO. DE PARTE DEL FABRICANTE |
|----|--|-------|------------------------------|-----------------------------|
| 41 | Resorte de Presión 0.6 x 4.8 x 20/15.5 | 2 | ----- | N2.5157 |
| 42 | Resorte de Presión 0.32 x 2.82 x 20.5/20.5 | 2 | H-5908-42 | N2.5178 |
| 43 | Resorte de Presión 0.8 x 4.8 x 20/18.5 | 1 | H-5908-43 | N2.5237 |
| 44 | Resorte de Presión 0.5 x 4 x 24/16.5 | 1 | H-5909-46 | N2.5296 |
| 45 | Pin de Clavija 2 x 16 | 1 | H-11455 | N21.2140 |
| 46 | Pin Paralelo 3 h6 x 30 | 1 | ----- | N21.2144 |
| 47 | Pin Paralelo 5 h6 x 37.6 | 3 | ----- | N21.2145 |
| 48 | Resorte de Presión 0.9 x 10 x 15/5.5 | 1 | H-7184-48Q | N21.5124 |
| 49 | Resorte de Presión 2.5 x 14.2 x 33.5/7.5 | 1 | ----- | N21.5138 |
| 50 | Resorte de Presión 1.25 x 9.8 x 45/14.5 | 1 | H-7369 | N21.5139 |
| 51 | Resorte de Presión 0.43 x 3.6 x 32.9/27.5 | 1 | H-5908-PS | N21.5219 |
| 52 | Balero 7 x 22 x 7 | 2 | H-5908-1134 | N3.1134 |
| 53 | Balero 6 x 19 x 6 | 1 | H-5908-1159 | N3.1159 |
| 54 | Balero 30 x 42 x 7 | 2 | H-956-BEAR | N3.1172 |
| 55 | Balero 35 x 44 x 5 | 1 | ----- | N3.1178 |
| 56 | Balero 5 x 16 x 5 | 2 | H-5908-56 | N3.1185 |
| 57 | Esfera de 4 mm | 6 | H-6036 | N3.1702 |
| 58 | Balero de Agujas K 4 x 7 x 7 TN | 3 | ----- | N3.2105 |
| 59 | Balero de Agujas K 5 x 9 x 13 TN | 3 | H-5908-2107Q | N3.2107 |
| 60 | Casquillo de Agujas 10 x 14 x 12 | 2 | H-5909-2347 | N3.2347 |
| 61 | Casquillo de Agujas 6 x 10 x 8 | 1 | ----- | N3.2362 |
| 62 | Balero Deslizable 8 x 10 x 12 | 1 | H-6684 | N3.3150 |
| 63 | Balero Deslizable 8 x 10 x 10 | 1 | ----- | N3.3172 |
| 64 | Buje de Giro con Aguja 6 x 10 x 15 | 2 | H-6037 | N3.4509 |
| 65 | Buje de Giro 6 x 10 x 12 | 1 | H-6038 | N3.4520 |
| 66 | Balero 10 x 19 x 5 | 2 | H-2614-179 | N31.1118 |
| 67 | Balero 4 x 11 x 4 | 2 | H-2614-161 | N31.1120 |
| 68 | Balero 17 x 30 x 7 | 1 | H-5908-1151 | N31.1151 |
| 69 | Balero 15 x 24 x 5 | 1 | H-5908-1163 | N31.1163 |
| 70 | Balero 40 x 50 x 6 | 1 | ----- | N31.1169 |
| 71 | Balero Deslizable 6 x 8 x 6 | 1 | ----- | N31.3115 |
| 72 | Cinturón Dentado 9 mm | 1 | H-5909-3236Q | N4.3236 |
| 73 | Etiqueta - "CE" | 1 | ----- | N4.9159 |
| 74 | Etiqueta Adhesiva - "Warning" | 1 | ----- | N41.9127 |
| 75 | Etiqueta Adhesiva - "WEE" | 1 | ----- | N43.9164 |
| 76 | Etiqueta Adhesiva - "18 Volt" | 1 | ----- | N43.9192 |
| 77 | Etiqueta Adhesiva - "FROMM" | 1 | ----- | N44.9104 |
| 78 | Tipo de Placa - "P329" | 1 | ----- | N44.9148 |
| 79 | Cubierta | 1 | ----- | N5.2702 |
| 80 | Motor de la Marcha | 1 | H-6039 | N51.1127 |
| 81 | Parte de Inserción | 1 | H-2614-2194 | N51.2194 |

ULINE H-7184**FROMM P329
HERRAMIENTA COMBINADA
PARA UNIÓN SIN SELLO**

800-295-5510

uline.mx

| # | DESCRIPCIÓN | CANT. | NO. DE PARTE DE ULINE | NO. DE PARTE DEL FABRICANTE |
|-----|------------------------|-------|-----------------------------|-----------------------------|
| 82 | Enchufe de Contacto | 3 | ----- | N51.2199 |
| 83 | Pin de Resorte | 1 | ----- | N51.5477 |
| 84 | Anillo O 24 x 2 | 2 | H-5908-6224 | N6.6224 |
| 85 | Anillo O 8 x 2 | 1 | H-5908-6232 | N6.6232 |
| 86 | Anillo O 29.5 x 3 | 2 | H-5908-6220 | N61.6220 |
| 87 | Mordaza de Sujeción | 1 | ----- | P30.1210 |
| 88 | Tubo | 1 | ----- | P31.1124 |
| 89 | Switch | 1 | ----- | P32.0144 |
| 90 | Piñón | 1 | H-2615-161 | P32.0159 |
| 92 | Soldadura Excéntrica | 1 | ----- | P32.0202 |
| 93 | Perno Resorte | 1 | ----- | P32.0203 |
| 94 | Engrane Dentado | 1 | ----- | P32.0204 |
| 95 | Rodillo Escalonado | 1 | ----- | P32.0205 |
| 96 | Palanca | 1 | ----- | P32.0206 |
| 97 | Cubierta de Engrane | 1 | ----- | P32.0207 |
| 98 | Engrane | 1 | ----- | P32.0208 |
| 99 | Engrane Dentado | 1 | ----- | P32.0209 |
| 100 | Engrane Dentado | 1 | ----- | P32.0210 |
| 101 | Engrane Dentado Cónico | 1 | ----- | P32.0211 |
| 102 | Engrane Dentado | 1 | ----- | P32.0212 |
| 103 | Motor | 1 | H-6040 | P32.0213 |
| 104 | Engrane Dentado | 1 | ----- | P32.0214 |
| 105 | Cuerpo | 1 | ----- | P32.0218 |
| 106 | Cubierta | 1 | ----- | P32.0221 |
| 107 | Tapa | 1 | H-5909-107Q | P32.0222 |
| 108 | Soldadura Excéntrica | 1 | H-5908-1022 | P32.1022 |
| 109 | Switch | 1 | H-6044 | P32.1024 |
| 110 | Caja de Esferas | 1 | ----- | P32.1027 |
| 111 | Perno | 1 | H-6045 | P32.1028 |
| 112 | Pieza de Empuje | 1 | ----- | P32.1029 |
| 113 | Pin de Conducción | 1 | H-5909-113 | P32.1032 |
| 114 | Conductor | 2 | H-6046 | P32.1035 |
| 115 | Eje de Asa | 1 | H-7292 | P32.1215 |
| 116 | Pulsador | 1 | H-5908-1251 | P32.1251 |
| 117 | Pinza de Soldadura | 1 | H-1728-1511 | P32.1511 |
| 118 | Manga de Centrado | 1 | H-5908-116 | P32.1710 |
| 119 | Botón de Giro | 2 | H-2614-TB | P32.2009 |
| 120 | Guía | 1 | ----- | P32.2012 |
| 121 | Engrane Dentado | 1 | H-2615-GEAR | P32.2016 |
| 122 | Cuerpo | 1 | H-5908-8101 | P32.8101 |
| 123 | Caja del Motor | 1 | H-6041 | P32.8103 |

ULINE H-7184**FROMM P329
HERRAMIENTA COMBINADA
PARA UNIÓN SIN SELLO**

800-295-5510

uline.mx

| # | DESCRIPCIÓN | CANT. | NO. DE PARTE DE ULINE | NO. DE PARTE DEL FABRICANTE |
|-----|----------------------------|-------|-----------------------------|-----------------------------|
| 124 | Insero de Acero | 1 | H-5908-8106 | P32.8106 |
| 125 | Pinza de Tope de Soldadura | 1 | H-6047 | P32.8107 |
| 126 | Soporte | 1 | H-5908-124 | P32.8108 |
| 127 | Agarradera Superior | 1 | H-6048 | P32.8109 |
| 128 | Agarradera Intermedia | 1 | H-6049 | P32.8110 |
| 129 | Agarradera Inferior | 1 | H-6050 | P32.8111 |
| 130 | Piñón | 1 | H-5908-8115 | P32.8115 |
| 131 | Resorte Deslizable | 1 | ----- | P32.8116 |
| 132 | Perno de Resorte | 1 | ----- | P32.8117 |
| 133 | Placa de Guía de Fleje | 1 | H-5908-8118 | P32.8118 |
| 134 | Imán | 1 | H-11456 | P32.8120 |
| 135 | Eje Excéntrico | 1 | H-11457 | P32.8121 |
| 136 | Polea de Cinturón Dentado | 1 | ----- | P32.8122 |
| 137 | Empuje | 1 | ----- | P32.8125 |
| 138 | Engrane Dentado | 1 | ----- | P32.8126 |
| 139 | Eje Planetario | 1 | ----- | P32.8127 |
| 140 | Engrane Dentado | 1 | ----- | P32.8128 |
| 141 | Engrane Dentado | 1 | ----- | P32.8129 |
| 142 | Palanca | 1 | H-5909-142 | P32.8130 |
| 143 | Cuerpo de Engrane | 1 | ----- | P32.8131 |
| 144 | Cubierta de Engranaje | 1 | ----- | P32.8132 |
| 145 | Engrane Dentado | 1 | ----- | P32.8134 |
| 146 | Cubierta | 1 | ----- | P32.8136 |
| 147 | Eje Rotatorio | 1 | ----- | P32.8137 |
| 148 | Eje de Engrane Cónico | 1 | H-5908-8139 | P32.8138 |
| 149 | Engrane Dentado | 1 | H-5908-8139 | P32.8139 |
| 150 | Retenedor | 1 | ----- | P32.8140 |
| 151 | Cubierta | 1 | ----- | P32.8141 |
| 152 | Palanca del Asa | 1 | H-6685 | P32.8142 |
| 153 | Engrane Dentado | 1 | ----- | P32.8153 |
| 154 | Cuerpo | 1 | H-5909-8157 | P32.8157 |
| 155 | Cubierta | 1 | H-5908-8158 | P32.8158 |
| 156 | Tapa | 1 | H-6051 | P32.8159 |
| 157 | Cubierta | 1 | H-5908-8195 | P32.8195 |
| 158 | Engrane Dentado | 1 | ----- | P33.0204 |
| 159 | Botón de Giro | 1 | ----- | P33.2115 |
| 160 | Manguera Encogible | 3 | ----- | P33.2127 |
| 161 | Disco | 1 | H-5908-DISK | P33.2145 |
| 162 | Pasador | 1 | ----- | P33.2155 |
| 163 | Empuje | 1 | ----- | P35.0146 |
| 164 | Rodillo del Eje | 3 | ----- | P35.3104 |

ULINE H-7184**FROMM P329
HERRAMIENTA COMBINADA
PARA UNIÓN SIN SELLO**

800-295-5510

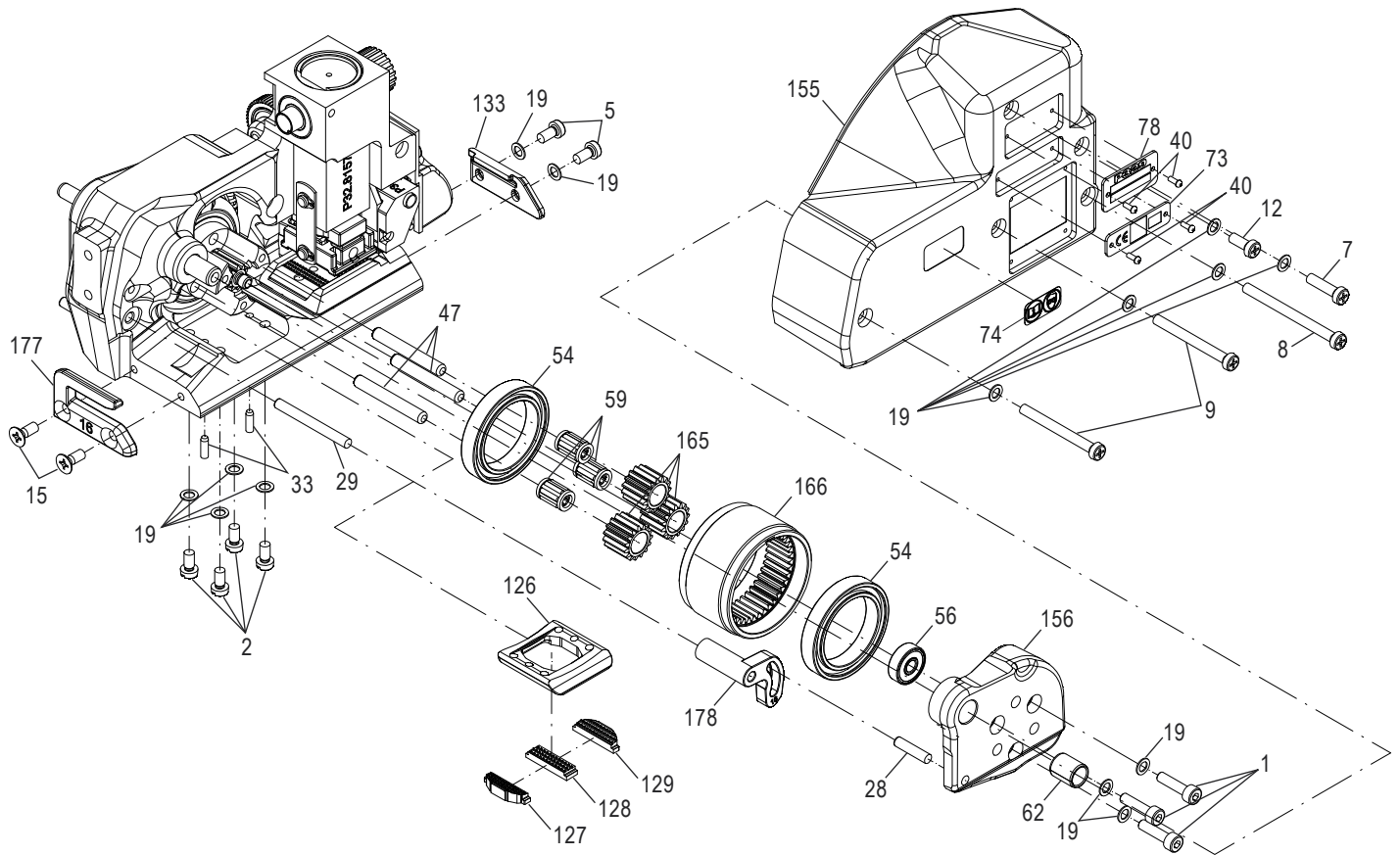
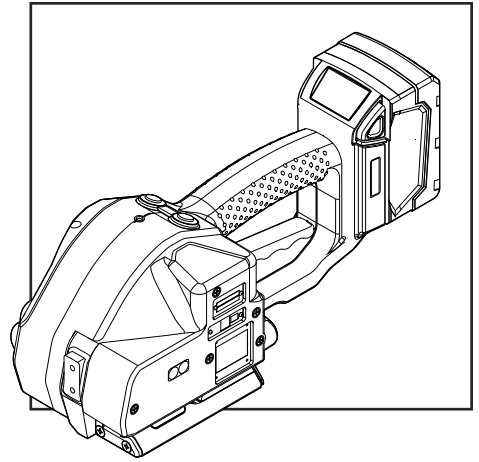
uline.mx

| # | DESCRIPCIÓN | CANT. | NO. DE PARTE DE ULINE | NO. DE PARTE DEL FABRICANTE |
|-----|------------------------------------|-------|------------------------------|-----------------------------|
| 165 | Rodillo del Eje | 3 | H-5908-3201 | P35.3201 |
| 166 | Rueda de Tensión | 1 | H-5909-3203 | P35.3203 |
| 167 | Cortador | 1 | H-5909-3214 | P35.3214 |
| 168 | Caja Guía | 1 | H-5909-3215 | P35.3215 |
| 169 | Palanca de Balancín | 1 | H-1728-SLVR | P35.3220 |
| 170 | Palanca de Balancín | 1 | H-2615-3221 | P35.3221 |
| 171 | Pieza de Empuje | 1 | H-5908-3223 | P35.3223 |
| 172 | Etiqueta Adhesiva - "Button Panel" | 1 | ----- | N44.9160 |
| 173 | Modelo Base | 1 | ----- | P32.0219 |
| 174 | Tablero de Circuitos | 1 | H-5909-0229 | P32.0229 |
| 175 | Caja del Motor | 1 | H-6042 | P32.8105 |
| 176 | Switch de Contacto | 1 | H-6043 | P32.8150 |
| 177 | Tope de Fleje | 1 | H-7184-8169 | P32.8169 |
| 178 | Guía de Fleje | 1 | H-7184-SG | P32.8178 |
| 179 | Parte de Inserción | 1 | H-5908-8198 | P32.8198 |
| 180 | Tablero de Circuitos | 1 | ----- | P32.8199 |
| 181 | Pin Guía | 1 | H-7184-GP181 | P35.3218 |
| 182 | Pin Guía | 1 | H-7184-GP182 | P35.3219 |

ULINE H-7184

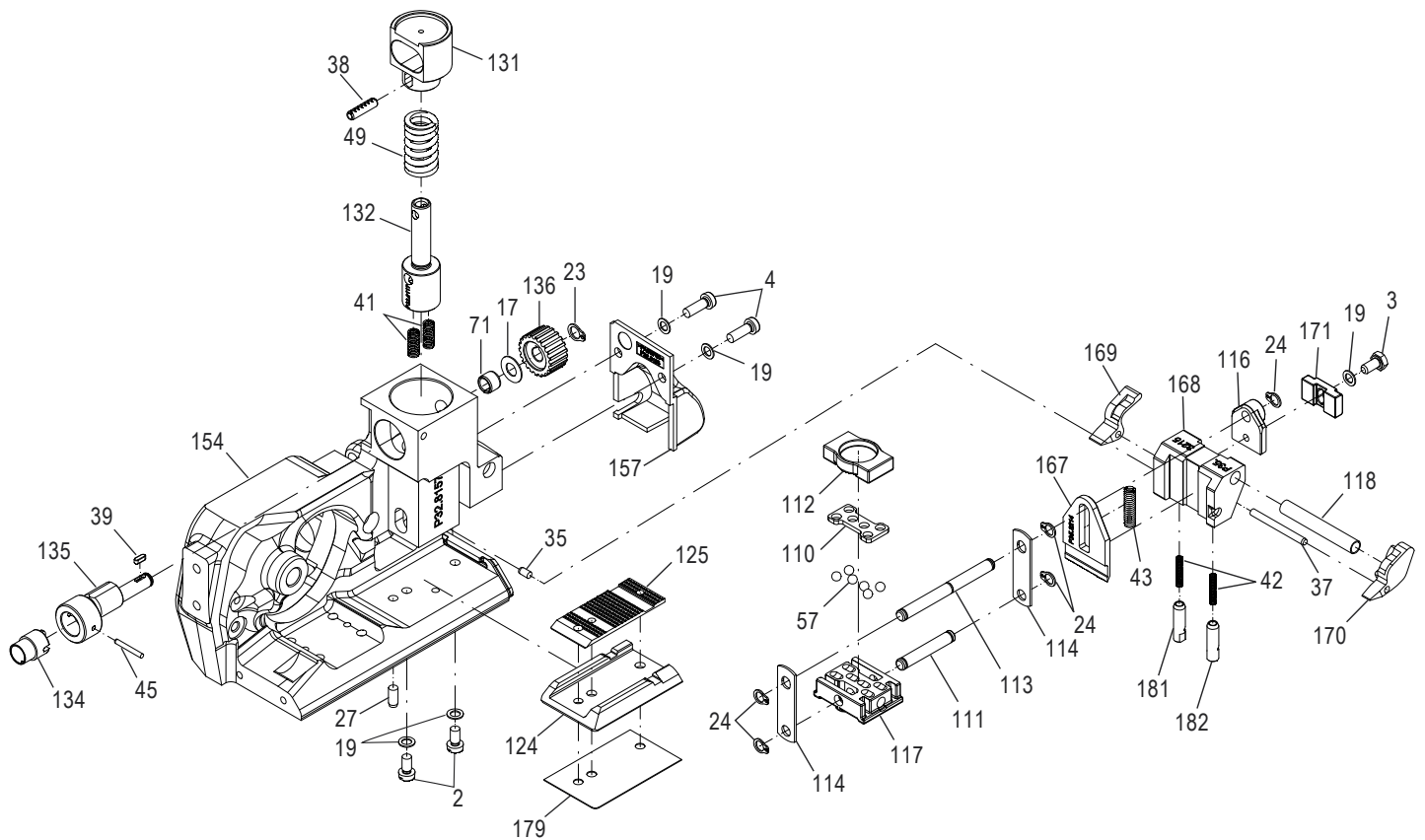
**FROMM P329 – OUTIL
MULTIFONCTIONNEL POUR
CERCLAGE SANS JOINTS**

1 800 295-5510
uline.ca



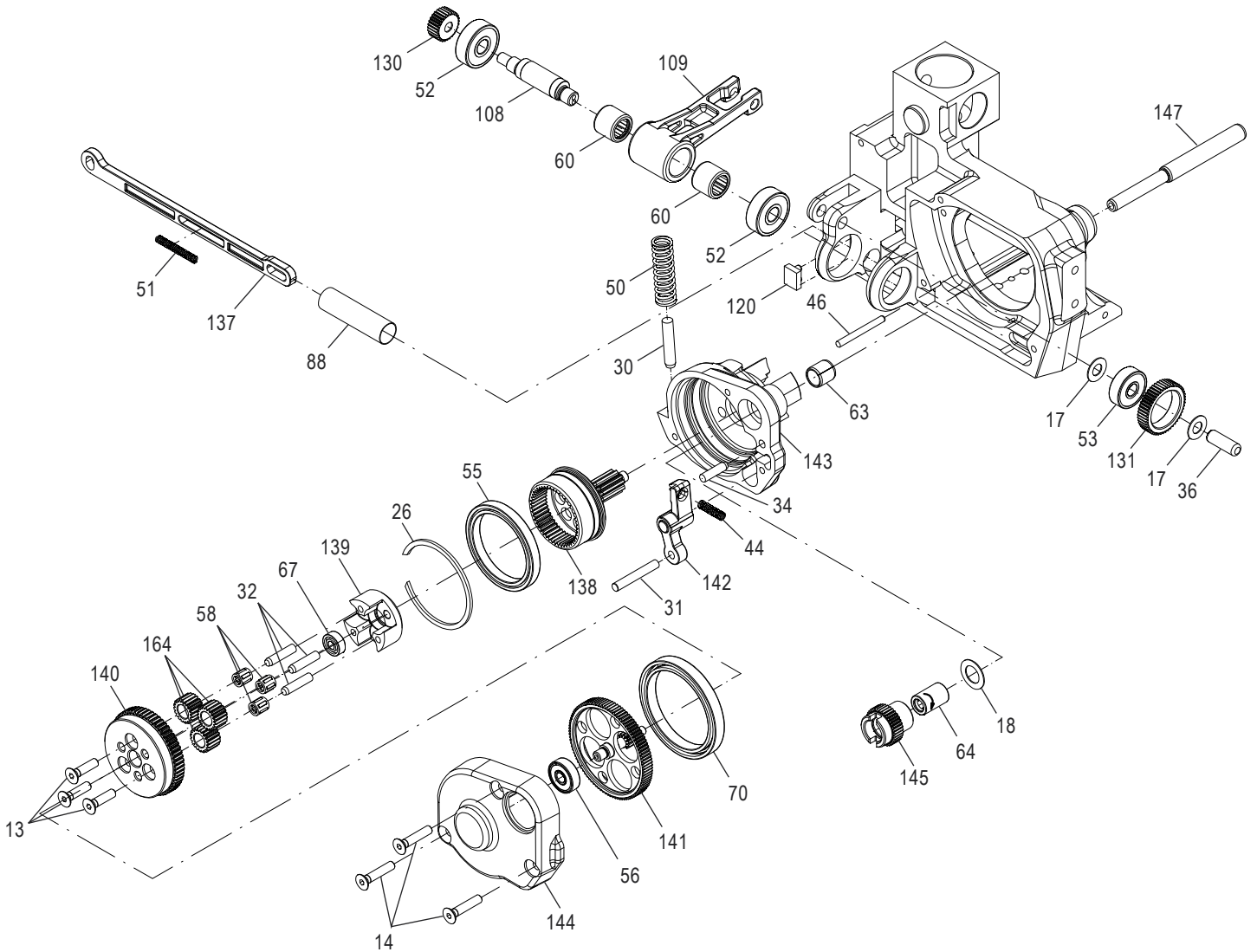
ULINE H-7184
FROMM P329 – OUTIL
MULTIFONCTIONNEL POUR
CERCLAGE SANS JOINTS

1 800 295-5510
uline.ca



ULINE H-7184
FROMM P329 – OUTIL
MULTIFONCTIONNEL POUR
CERCLAGE SANS JOINTS

1 800 295-5510
uline.ca

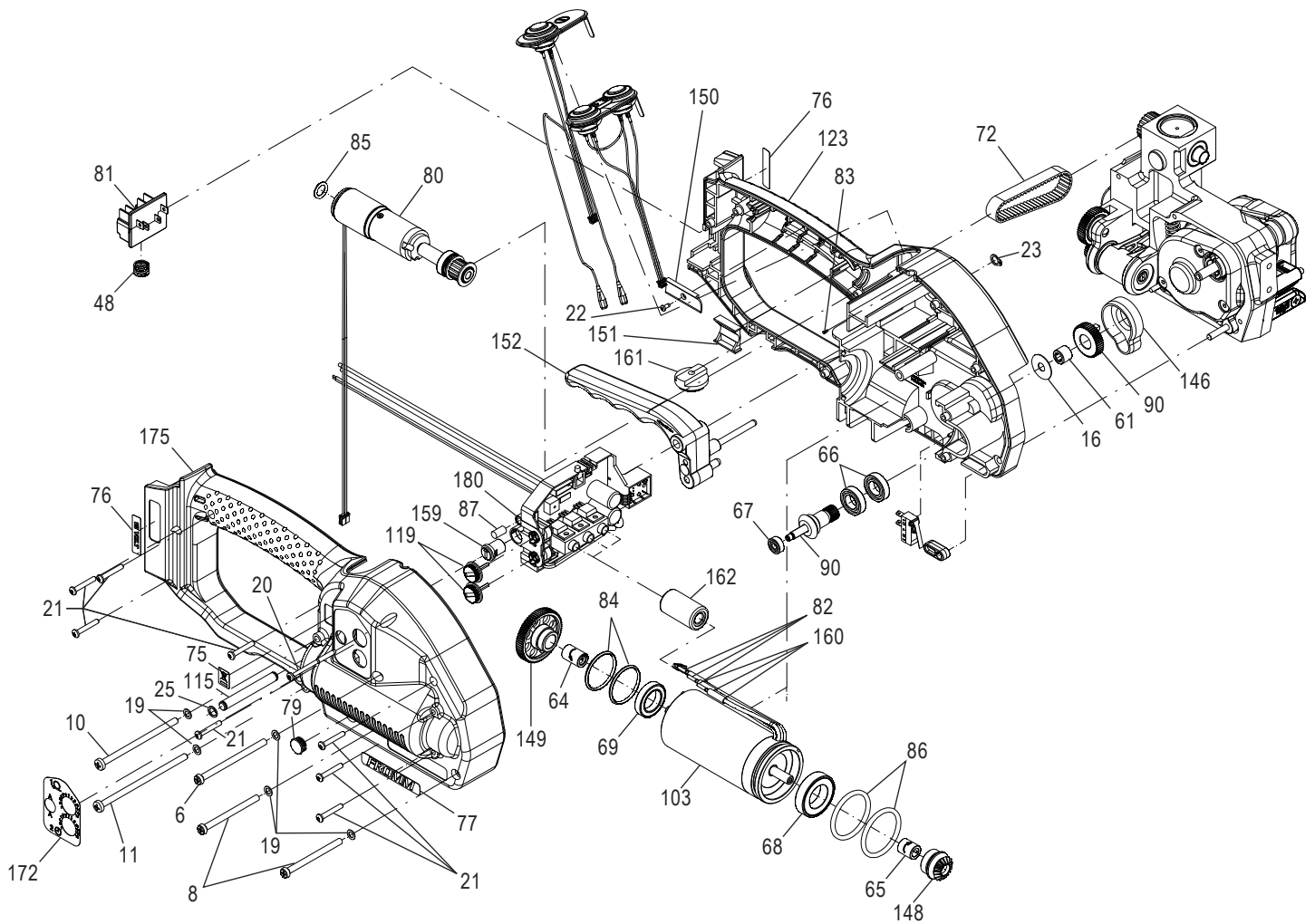


ULINE H-7184

1 800 295-5510

uline.ca

**FROMM P329 – OUTIL
MULTIFONCTIONNEL POUR
CERCLAGE SANS JOINTS**



**FROMM P329 – OUTIL
MULTIFONCTIONNEL POUR
CERCLAGE SANS JOINTS**

| # | DESCRIPTION | QTÉ | RÉF. ULINE | RÉF. DU FABRICANT |
|----|--|-----|------------------------------|-------------------|
| 1 | Vis, M4 x 16 | 3 | H-6028 | N1.1196 |
| 2 | Vis, M4 x 7,8 | 6 | H-6029 | N1.1305 |
| 3 | Vis hexagonale, M4 x 8 | 1 | H-5908-1553 | N1.1553 |
| 4 | Vis à tête plate, M4 x 12 | 2 | H-7184-4Q | N1.1910 |
| 5 | Vis à tête plate, M4 x 8 | 2 | H-5909-1911 | N1.1911 |
| 6 | Vis à tête plate, M4 x 60 | 1 | H-2615-137Q | N1.1927 |
| 7 | Vis à tête plate, M4 x 16 | 1 | H-6030 | N1.1928 |
| 8 | Vis à tête plate, M4 x 50 | 3 | H-6031 | N1.1934 |
| 9 | Vis à tête plate, M4 x 40 | 2 | H-6032 | N1.1943 |
| 10 | Vis, M4 x 70 | 1 | H-5909-11966 | N1.1966 |
| 11 | Vis, M4 x 80 | 1 | H-5909-1972 | N1.1972 |
| 12 | Vis à tête plate, M4 x 10 | 1 | H-6033 | N1.1973 |
| 13 | Vis à tête creuse, M4 x 16 | 3 | ----- | N1.2188 |
| 14 | Vis à tête creuse, M4 x 20 | 3 | ----- | N1.2189 |
| 15 | Vis à tête creuse, M4 x 10 | 2 | H-5908-SCREW | N1.2222 |
| 16 | Rondelle d'espacement, 6 x 18 x 0,5 | 1 | ----- | N1.6305 |
| 17 | Rondelle d'espacement, 6 x 12 x 0,5 | 3 | ----- | N1.6331 |
| 18 | Rondelle d'espacement, 9 x 15 x 0,5 | 1 | ----- | N1.6386 |
| 19 | Rondelle de sécurité, M4 | 24 | H-6034 | N1.6504 |
| 20 | Vis PT, 3 x 40 | 1 | H-956-1/2SC | N1.7207 |
| 21 | Vis PT, 3 x 20 | 8 | H-6035 | N1.7211 |
| 22 | Vis PT, 2,2 x 5 | 1 | ----- | N1.7222 |
| 23 | Bague de sécurité, 6 | 2 | H-2615-RNG | N2.1118 |
| 24 | Bague de sécurité, 5 | 4 | H-2615-1121 | N2.1121 |
| 25 | Bague à ressort, SW6 | 1 | H-2614-160 | N2.1606 |
| 26 | Bague à ressort, SB44 | 1 | ----- | N2.1610 |
| 27 | Broche parallèle, 4 m6 x 10 | 1 | ----- | N2.2110 |
| 28 | Broche parallèle, 4 m6 x 18 | 1 | H-5908-2119 | N2.2119 |
| 29 | Broche parallèle, 4 m6 x 40 | 1 | H-5909-2124 | N2.2124 |
| 30 | Broche parallèle, 5 m6 x 26 | 1 | ----- | N2.2126 |
| 31 | Broche parallèle, 4 m6 x 28 | 1 | ----- | N2.2142 |
| 32 | Broche parallèle, 4 h6 x 18 | 3 | ----- | N2.2145 |
| 33 | Broche parallèle, 3 m6 x 10 | 2 | H-5909-33 | N2.2147 |
| 34 | Broche parallèle, 4 m6 x 16 | 1 | ----- | N2.2180 |
| 35 | Broche parallèle, 3 m6 x 6 | 1 | H-956-PPIN | N2.2187 |
| 36 | Broche parallèle, 6 h6 x 18 | 1 | ----- | N2.2190 |
| 37 | Broche parallèle, 3 m6 x 32 | 1 | H-5908-37 | N2.2193 |
| 38 | Goupille cylindrique, 4 x 15 | 1 | ----- | N2.2443 |
| 39 | Clavette, 2 x 2 x 6 | 1 | ----- | N2.3364 |
| 40 | Boulon à tête rectangulaire, 1,85 x 4,76 | 2 | ----- | N2.4902 |

**FROMM P329 – OUTIL
MULTIFONCTIONNEL POUR
CERCLAGE SANS JOINTS**

| # | DESCRIPTION | QTÉ | RÉF. ULINE | RÉF. DU FABRICANT |
|----|--|-----|------------------------------|-------------------|
| 41 | Ressort de pression, 0,6 x 4,8 x 20/15,5 | 2 | ----- | N2.5157 |
| 42 | Ressort de pression, 0,32 x 2,82 x 20,5/20,5 | 2 | H-5908-42 | N2.5178 |
| 43 | Ressort de pression, 0,8 x 4,8 x 20/18,5 | 1 | H-5908-43 | N2.5237 |
| 44 | Ressort de pression, 0,5 x 4 x 24/16,5 | 1 | H-5909-46 | N2.5296 |
| 45 | Goupille cylindrique, 2 x 16 | 1 | H-11455 | N21.2140 |
| 46 | Broche parallèle, 3 h6 x 30 | 1 | ----- | N21.2144 |
| 47 | Broche parallèle, 5 h6 x 37,6 | 3 | ----- | N21.2145 |
| 48 | Ressort de pression, 0,9 x 10 x 15/5,5 | 1 | H-7184-48Q | N21.5124 |
| 49 | Ressort de pression, 2,5 x 14,2 x 33,5/7,5 | 1 | ----- | N21.5138 |
| 50 | Ressort de pression, 1,25 x 9,8 x 45/14,5 | 1 | H-7369 | N21.5139 |
| 51 | Ressort de pression, 0,43 x 3,6 x 32,9/27,5 | 1 | H-5908-PS | N21.5219 |
| 52 | Roulement à bille, 7 x 22 x 7 | 2 | H-5908-1134 | N3.1134 |
| 53 | Roulement à bille, 6 x 19 x 6 | 1 | H-5908-1159 | N3.1159 |
| 54 | Roulement à bille, 30 x 42 x 7 | 2 | H-956-BEAR | N3.1172 |
| 55 | Roulement à bille, 35 x 44 x 5 | 1 | ----- | N3.1178 |
| 56 | Roulement à bille, 5 x 16 x 5 | 2 | H-5908-56 | N3.1185 |
| 57 | Bille, 4 mm | 6 | H-6036 | N3.1702 |
| 58 | Cage à aiguilles, K 4 x 7 x 7 TN | 3 | ----- | N3.2105 |
| 59 | Cage à aiguilles, K 5 x 9 x 13 TN | 3 | H-5908-2107Q | N3.2107 |
| 60 | Douille d'aiguille, 10 x 14 x 12 | 2 | H-5909-2347 | N3.2347 |
| 61 | Douille d'aiguille, 6 x 10 x 8 | 1 | ----- | N3.2362 |
| 62 | Palier lisse, 8 x 10 x 12 | 1 | H-6684 | N3.3150 |
| 63 | Palier lisse, 8 x 10 x 10 | 1 | ----- | N3.3172 |
| 64 | Aiguille de roue libre, 6 x 10 x 15 | 2 | H-6037 | N3.4509 |
| 65 | Roue libre, 6 x 10 x 12 | 1 | H-6038 | N3.4520 |
| 66 | Roulement à bille, 10 x 19 x 5 | 2 | H-2614-179 | N31.1118 |
| 67 | Roulement à bille, 4 x 11 x 4 | 2 | H-2614-161 | N31.1120 |
| 68 | Roulement à bille, 17 x 30 x 7 | 1 | H-5908-1151 | N31.1151 |
| 69 | Roulement à bille, 15 x 24 x 5 | 1 | H-5908-1163 | N31.1163 |
| 70 | Roulement à bille, 40 x 50 x 6 | 1 | ----- | N31.1169 |
| 71 | Palier lisse, 6 x 8 x 6 | 1 | ----- | N31.3115 |
| 72 | Courroie crantée, 9 mm | 1 | H-5909-3236Q | N4.3236 |
| 73 | Étiquette – " CE " | 1 | ----- | N4.9159 |
| 74 | Étiquette adhésive – " Warnings " | 1 | ----- | N41.9127 |
| 75 | Étiquette adhésive – " WEEE " | 1 | ----- | N43.9164 |
| 76 | Étiquette adhésive – " 18 Volt " | 1 | ----- | N43.9192 |
| 77 | Étiquette adhésive – " FROMM " | 1 | ----- | N44.9104 |
| 78 | Plaque type – " P329 " | 1 | ----- | N44.9148 |
| 79 | Couvercle | 1 | ----- | N5.2702 |
| 80 | Moteur à engrenages | 1 | H-6039 | N51.1127 |
| 81 | Pièce d'insertion | 1 | H-2614-2194 | N51.2194 |

**FROMM P329 – OUTIL
MULTIFONCTIONNEL POUR
CERCLAGE SANS JOINTS**

| # | DESCRIPTION | QTÉ | RÉF. ULINE | RÉF. DU FABRICANT |
|-----|--------------------------|-----|-----------------------------|-------------------|
| 82 | Fiche de contact | 3 | ----- | N51.2199 |
| 83 | Cheville de ressort | 1 | ----- | N51.5477 |
| 84 | Joint torique, 24 x 2 | 2 | H-5908-6224 | N6.6224 |
| 85 | Joint torique, 8 x 2 | 1 | H-5908-6232 | N6.6232 |
| 86 | Joint torique, 29,5 x 3 | 2 | H-5908-6220 | N61.6220 |
| 87 | Serre-tôle | 1 | ----- | P30.1210 |
| 88 | Tube | 1 | ----- | P31.1124 |
| 89 | Bascule | 1 | ----- | P32.0144 |
| 90 | Pignon | 1 | H-2615-161 | P32.0159 |
| 92 | Excentrique à soudage | 1 | ----- | P32.0202 |
| 93 | Boulon à ressort | 1 | ----- | P32.0203 |
| 94 | Roue d'engrenage | 1 | ----- | P32.0204 |
| 95 | Galet | 1 | ----- | P32.0205 |
| 96 | Levier | 1 | ----- | P32.0206 |
| 97 | Corps d'engrenage | 1 | ----- | P32.0207 |
| 98 | Engrenage | 1 | ----- | P32.0208 |
| 99 | Roue d'engrenage | 1 | ----- | P32.0209 |
| 100 | Roue d'engrenage | 1 | ----- | P32.0210 |
| 101 | Roue d'engrenage conique | 1 | ----- | P32.0211 |
| 102 | Roue d'engrenage | 1 | ----- | P32.0212 |
| 103 | Moteur | 1 | H-6040 | P32.0213 |
| 104 | Roue d'engrenage | 1 | ----- | P32.0214 |
| 105 | Corps | 1 | ----- | P32.0218 |
| 106 | Couvercle | 1 | ----- | P32.0221 |
| 107 | Couvercle d'extrémité | 1 | H-5909-107Q | P32.0222 |
| 108 | Excentrique à soudage | 1 | H-5908-1022 | P32.1022 |
| 109 | Bascule | 1 | H-6044 | P32.1024 |
| 110 | Cage à billes | 1 | ----- | P32.1027 |
| 111 | Boulon | 1 | H-6045 | P32.1028 |
| 112 | Butée | 1 | ----- | P32.1029 |
| 113 | Goupille d'entraînement | 1 | H-5909-113 | P32.1032 |
| 114 | Lame de poussée | 2 | H-6046 | P32.1035 |
| 115 | Arbre de poignée | 1 | H-7292 | P32.1215 |
| 116 | Poussoir | 1 | H-5908-1251 | P32.1251 |
| 117 | Préhenseur à soudage | 1 | H-1728-1511 | P32.1511 |
| 118 | Manchon de centrage | 1 | H-5908-116 | P32.1710 |
| 119 | Bouton rotatif | 2 | H-2614-TB | P32.2009 |
| 120 | Guide | 1 | ----- | P32.2012 |
| 121 | Roue d'engrenage | 1 | H-2615-GEAR | P32.2016 |
| 122 | Corps | 1 | H-5908-8101 | P32.8101 |
| 123 | Boîtier du moteur | 1 | H-6041 | P32.8103 |

**FROMM P329 – OUTIL
MULTIFONCTIONNEL POUR
CERCLAGE SANS JOINTS**

| # | DESCRIPTION | QTÉ | RÉF. ULINE | RÉF. DU FABRICANT |
|-----|---------------------------|-----|-----------------------------|-------------------|
| 124 | Insertion métallique | 1 | H-5908-8106 | P32.8106 |
| 125 | Préhenseur à soudage | 1 | H-6047 | P32.8107 |
| 126 | Support | 1 | H-5908-124 | P32.8108 |
| 127 | Préhenseur supérieur | 1 | H-6048 | P32.8109 |
| 128 | Préhenseur central | 1 | H-6049 | P32.8110 |
| 129 | Préhenseur inférieur | 1 | H-6050 | P32.8111 |
| 130 | Pignon | 1 | H-5908-8115 | P32.8115 |
| 131 | Ressort lisse | 1 | ----- | P32.8116 |
| 132 | Boulon à ressort | 1 | ----- | P32.8117 |
| 133 | Plaque de guide de sangle | 1 | H-5908-8118 | P32.8118 |
| 134 | Aimant | 1 | H-11456 | P32.8120 |
| 135 | Arbre excentrique | 1 | H-11457 | P32.8121 |
| 136 | Poulie à courroie crantée | 1 | ----- | P32.8122 |
| 137 | Poussoir | 1 | ----- | P32.8125 |
| 138 | Roue d'engrenage | 1 | ----- | P32.8126 |
| 139 | Arbre planétaire | 1 | ----- | P32.8127 |
| 140 | Roue d'engrenage | 1 | ----- | P32.8128 |
| 141 | Roue d'engrenage | 1 | ----- | P32.8129 |
| 142 | Levier | 1 | H-5909-142 | P32.8130 |
| 143 | Corps d'engrenage | 1 | ----- | P32.8131 |
| 144 | Couvercle d'engrenage | 1 | ----- | P32.8132 |
| 145 | Roue d'engrenage | 1 | ----- | P32.8134 |
| 146 | Boîtier | 1 | ----- | P32.8136 |
| 147 | Arbre pivotant | 1 | ----- | P32.8137 |
| 148 | Arbre d'engrenage conique | 1 | H-5908-8139 | P32.8138 |
| 149 | Roue d'engrenage | 1 | H-5908-8139 | P32.8139 |
| 150 | Anneau de retenue | 1 | ----- | P32.8140 |
| 151 | Couvercle | 1 | ----- | P32.8141 |
| 152 | Levier de poignée | 1 | H-6685 | P32.8142 |
| 153 | Roue d'engrenage | 1 | ----- | P32.8153 |
| 154 | Corps | 1 | H-5909-8157 | P32.8157 |
| 155 | Couvercle | 1 | H-5908-8158 | P32.8158 |
| 156 | Couvercle d'extrémité | 1 | H-6051 | P32.8159 |
| 157 | Couvercle | 1 | H-5908-8195 | P32.8195 |
| 158 | Roue d'engrenage | 1 | ----- | P33.0204 |
| 159 | Bouton rotatif | 1 | ----- | P33.2115 |
| 160 | Tuyau rétractable | 3 | ----- | P33.2127 |
| 161 | Disque | 1 | H-5908-DISK | P33.2145 |
| 162 | Douille | 1 | ----- | P33.2155 |
| 163 | Poussoir | 1 | ----- | P35.0146 |
| 164 | Galet d'engrenage | 3 | ----- | P35.3104 |

ULINE H-7184**FROMM P329 – OUTIL
MULTIFONCTIONNEL POUR
CERCLAGE SANS JOINTS**

1 800 295-5510

uline.ca

| # | DESCRIPTION | QTÉ | RÉF. ULINE | RÉF. DU FABRICANT |
|-----|---------------------------------------|-----|------------------------------|-------------------|
| 165 | Galet d'engrenage | 3 | H-5908-3201 | P35.3201 |
| 166 | Roue de tension | 1 | H-5909-3203 | P35.3203 |
| 167 | Outil de coupe | 1 | H-5909-3214 | P35.3214 |
| 168 | Boîtier guide | 1 | H-5909-3215 | P35.3215 |
| 169 | Levier à bascule | 1 | H-1728-SLVR | P35.3220 |
| 170 | Levier à bascule | 1 | H-2615-3221 | P35.3221 |
| 171 | Butée | 1 | H-5908-3223 | P35.3223 |
| 172 | Étiquette adhésive – " Button Panel " | 1 | ----- | N44.9160 |
| 173 | Base standard | 1 | ----- | P32.0219 |
| 174 | Carte de circuits imprimés | 1 | H-5909-0229 | P32.0229 |
| 175 | Boîtier du moteur | 1 | H-6042 | P32.8105 |
| 176 | Interrupteur tactile | 1 | H-6043 | P32.8150 |
| 177 | Arrêt de courroie | 1 | H-7184-8169 | P32.8169 |
| 178 | Guide de courroie | 1 | H-7184-SG | P32.8178 |
| 179 | Pièce d'insertion | 1 | H-5908-8198 | P32.8198 |
| 180 | Carte de circuits imprimés | 1 | ----- | P32.8199 |
| 181 | Tige de guidage | 1 | H-7184-GP181 | P35.3218 |
| 182 | Tige de guidage | 1 | H-7184-GP182 | P35.3219 |