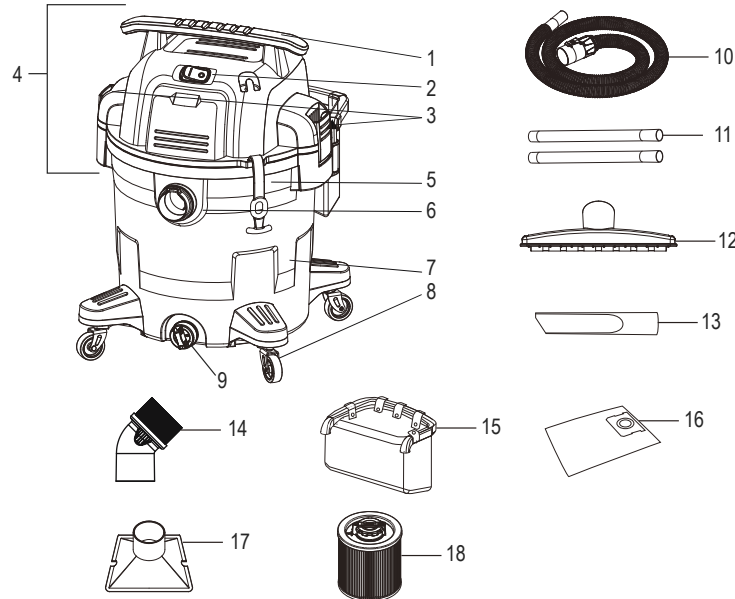
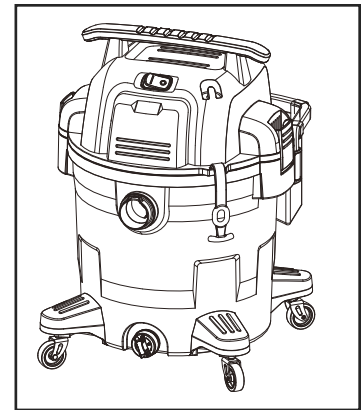
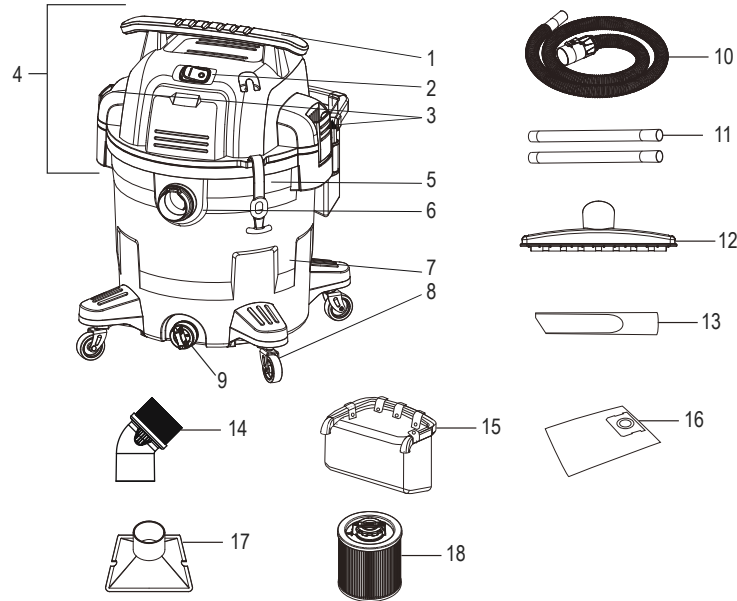
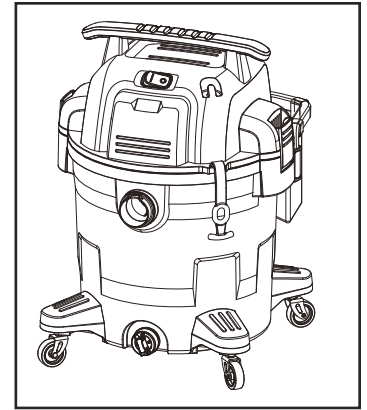


ULINE H-8902
DEWALT® 12 GALLON
WET/DRY VACUUM

1-800-295-5510
 uline.com



#	DESCRIPTION	QTY.	ULINE PART NO.	MFG. PART NO.
1	Handle	1	-----	F6413700871
2	Power Switch	1	-----	Q5598195001
3	Lid Latch	2	-----	Q55916750011
4	Power Head	1	H-8902-PH	DXV12P-PH
5	Hose Strap	1	-----	X5598180234
6	Vacuum Port	1	-----	Q0632714001
7	Dust Tank	1	-----	Q60614361581
8	Heavy-Duty Rubberized Caster	4	H-9336	DXV10SA-CASTER
9	Drain Port	1	-----	Q5590895001
10	2 1/2" x 7' Air Hose	1	H-9081	DXVA19-2556
11	Extension Wand	2	H-9079	DXVA08-2502
12	Floor Nozzle	1	H-9078	DXVA08-2591
13	Crevice Nozzle	1	H-9075	DXVA08-2506
14	Round Brush	1	H-9077	DXVA08-2401
15	Accessory Bag with Holder	1	H-9085	DXVA19-5156
16	Disposable Filter Bag	1	S-24038	DXVA19-4102
17	Utility Nozzle	1	H-9076	DXVA08-2503
18	Cartridge Filter	1	S-24031	DXVC6910
	Drain Cap (Not Shown)	1	H-8902-CAPQ	-----

ULINE H-8902**DEWALT® ASPIRADORA
PARA SÓLIDOS Y LÍQUIDOS –
12 GALONES**800-295-5510
uline.mx

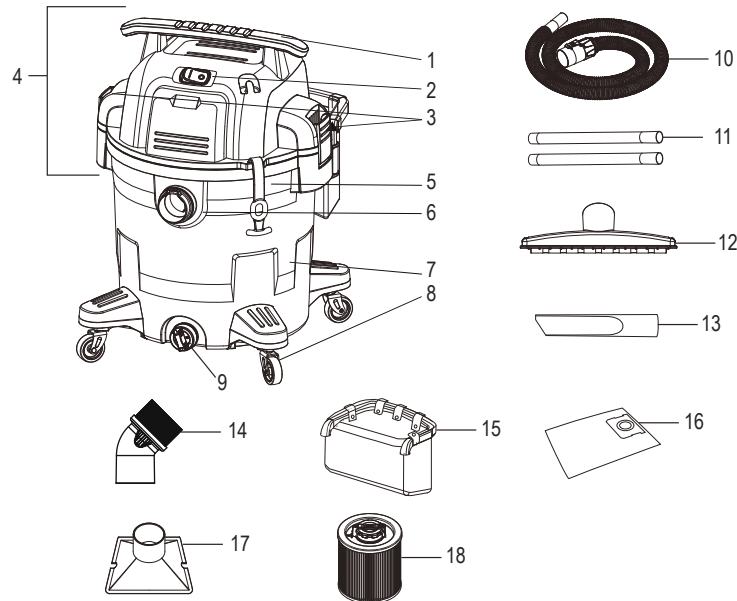
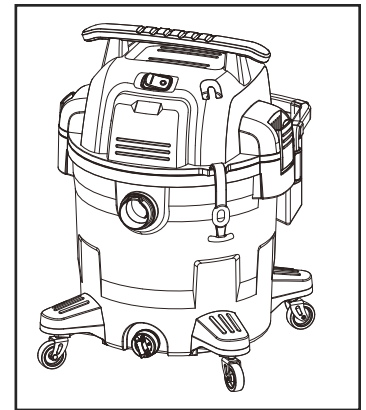
#	DESCRIPCIÓN	CANT.	NO. DE PARTE DE ULINE	NO. DE PARTE DEL FABRICANTE
1	Asa	1	-----	F6413700871
2	Interruptor de Energía	1	-----	Q5598195001
3	Pestillo de la Tapa	2	-----	Q55916750011
4	Motor	1	H-8902-PH	DVX12P-PH
5	Correa para Manguera	1	-----	X5598180234
6	Puerto de Aspirado	1	-----	Q0632714001
7	Tanque para Polvo	1	-----	Q60614361581
8	Rueda de Caucho de Uso Pesado	4	H-9336	DXV10SA-CASTER
9	Puerto de Drenaje	1	-----	Q5590895001
10	Manguera de Aire de 2½" x 7'	1	H-9081	DXVA19-2556
11	Tubo	2	H-9079	DXVA08-2502
12	Boquilla para Piso	1	H-9078	DXVA08-2591
13	Boquilla para Hendiduras	1	H-9075	DXVA08-2506
14	Cepillo Redondo	1	H-9077	DXVA08-2401
15	Bolsa para Accesorios con Soporte	1	H-9085	DXVA19-5156
16	Bolsa de Filtro Desechable	1	S-24038	DXVA19-4102
17	Boquilla Utilitaria	1	H-9076	DXVA08-2503
18	Filtro de Cartucho	1	S-24031	DXVC6910
	Tapa del Drenaje (No Se Muestra)	1	H-8902-CAPQ	-----

ULINE H-8902

DEWALT® – ASPIRATEUR EAU ET POUSSIÈRE – 12 GALLONS

1-800-295-5510

uline.ca



#	DESCRIPTION	QTÉ	RÉF. ULINE	RÉF. DU FABRICANT
1	Poignée	1	-----	F6413700871
2	Interrupteur d'alimentation	1	-----	Q5598195001
3	Loquet du couvercle	2	-----	Q55916750011
4	Ensemble moteur	1	H-8902-PH	DVX12P-PH
5	Porte-tuyau	1	-----	X5598180234
6	Orifice d'aspiration	1	-----	Q0632714001
7	Réservoir à poussière	1	-----	Q60614361581
8	Roulette en caoutchouc robuste	4	H-9336	DXV10SA-CASTER
9	Orifice d'évacuation	1	-----	Q5590895001
10	Tuyau d'air de 2 ½ po x 7 pi	1	H-9081	DXVA19-2556
11	Tube-rallonge	2	H-9079	DXVA08-2502
12	Suceur à sol	1	H-9078	DXVA08-2591
13	Suceur plat	1	H-9075	DXVA08-2506
14	Brosse ronde	1	H-9077	DXVA08-2401
15	Sac avec porte-accessoires	1	H-9085	DXVA19-5156
16	Sac-filtre jetable	1	S-24038	DXVA19-4102
17	Buse utilitaire	1	H-9076	DXVA08-2503
18	Filtre à cartouche	1	S-24031	DXVC6910
	Capuchon du drain (non illustré)	1	H-8902-CAPQ	-----